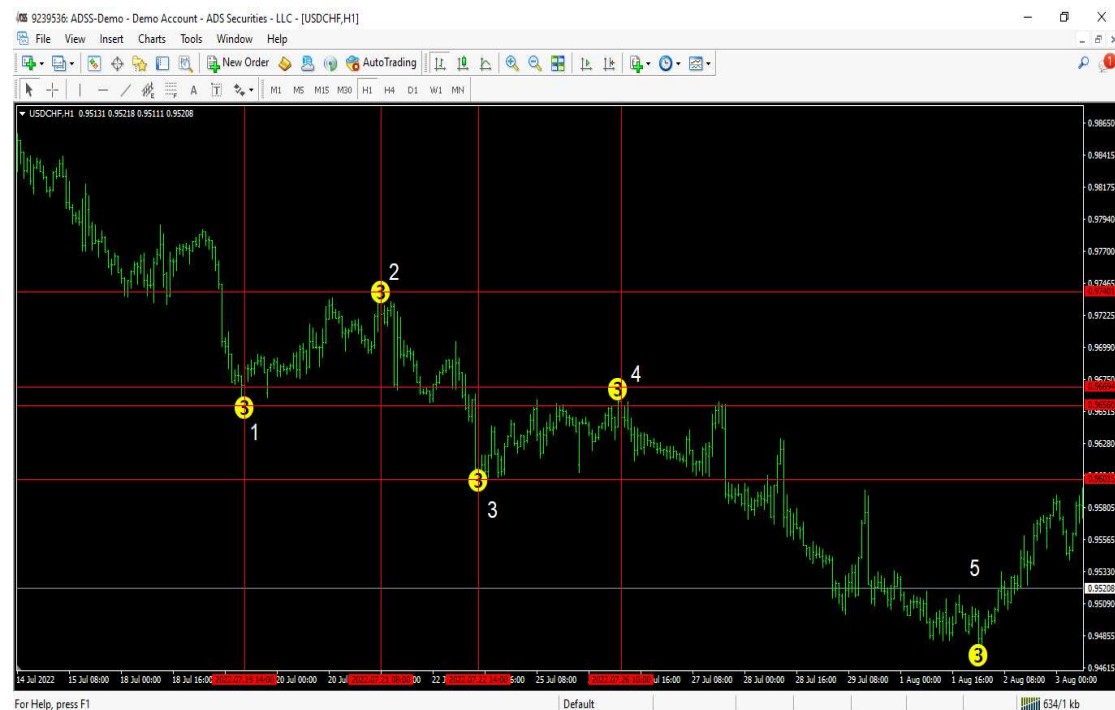


3 level semafor martingale



EA will trade using 3 level semafor indicator provided . We are only interested in the "semafor 3" . Which is the yellow circle with the number "3" . Thiis is an indicator that repaints , but once a new semafor 3 appears then all the previous semafor 3s will not paint and will be permanent.

The picture displays 5 semafors . labeled from 1 to 5.

Method 1

The EA will start trading when new 3 level semafor appears. In this case semafor no 1 appear down so EA will open opposite , but position will be opened. If semafor 1 repainted and moved further down by x number of pips then EA will open sell position double the buy position and wait untill the basket profit is achived then close all .

If semafor no. 2 appeared as shown in the chart, then EA will do the same again. Open sell position with martingale sizing , If semafor 2 repainted and moved further up by x number of pips then EA will open buy position and wait untill the basket profit is achived then close all open positions .

Method 2

same as method 1 but reversed . When semafor no.1 appears EA will open sell . If it goes opposite direction by x pips then EA will open martingale buy and so on untill profit basket is achieved.

Method 3

When semafor 1 appears EA will trade sell then when semafor no 2 appears EA will trade buy martingale and so on untill profit basket is achieved.

Method 4

Same like method 2 but reversed . When semafor 1 appears EA will trade buy then when semafor no 2 appears EA will trade sell martingale and so on untill profit basket is achieved.

EA will have dropdown list to choose which method to trade .