

## Introduction

The indicator should give alerts based on the closing of the price of 2 candles (current and previous) + certain conditions from the stochastic oscillator. This is further explained in the Buy Signal and Sell Signal sections.

The indicator should have:

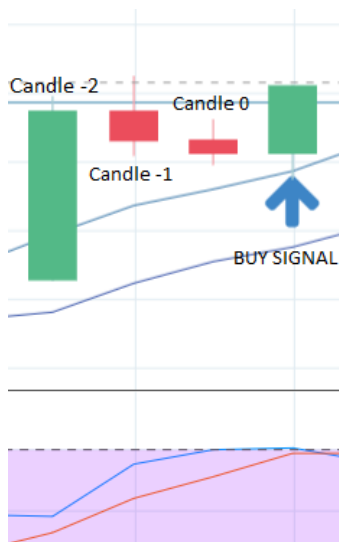
- I should be able to select values of the stochastic oscillator (K, D and Smooth).
- I should be able to turn on/off pop up alerts.
- I should be able to turn on/off pop email alerts.
- Just one alert per candle.
- The alert should come "X" minutes before the closing of current candle. I should be able to select the minutes. For example, in a 30min TF scenario and I select 5 minutes: if the previous candle (closing 12.00) and the current candle meet the buy criteria at 12.25 (30 min TF – 5minutes), I should get a buy signal at 12.25 →
- The indicator should place buy and sell arrows. The buy arrow should be placed below the current candle and the sell arrow should be placed above the current candle.

## Buy Signal = Condition 1 + Condition 2

Condition 1 = Previous candle (Candle -1) AND current candle (Candle 0) close red (both candles have lower closing prices than their previous bars)

Condition 2 = Stochastic Oscillator K line value of the Candle -1 is higher than Stochastic Oscillator K line value of the Candle -2 + Stochastic Oscillator K line value of the Candle 0 is higher than Stochastic Oscillator K line value of the Candle -1

Example:



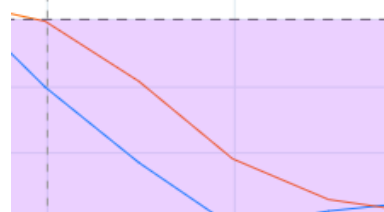
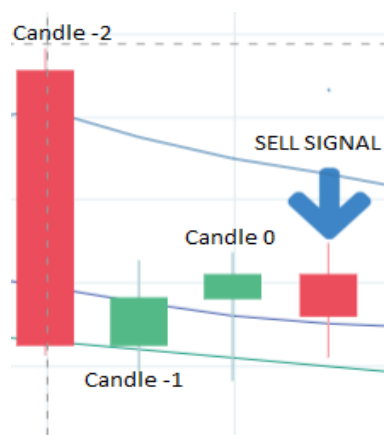
See next page for Sell signal criteria.

### **Sell Signal = Condition 1 + Condition 2**

Condition 1 = Previous candle (Candle -1) AND current candle (Candle 0) close green (both candles have higher closing prices than their previous bars)

Condition 2 = Stochastic Oscillator K line value of the Candle -1 is lower than Stochastic Oscillator K line value of the Candle -2 + Stochastic Oscillator K line value of the Candle 0 is lower than Stochastic Oscillator K line value of the Candle -1

Example:



(THE ARROW SHOULD BE ABOVE CANDLE 0, NOT THE NEXT CANDLE)