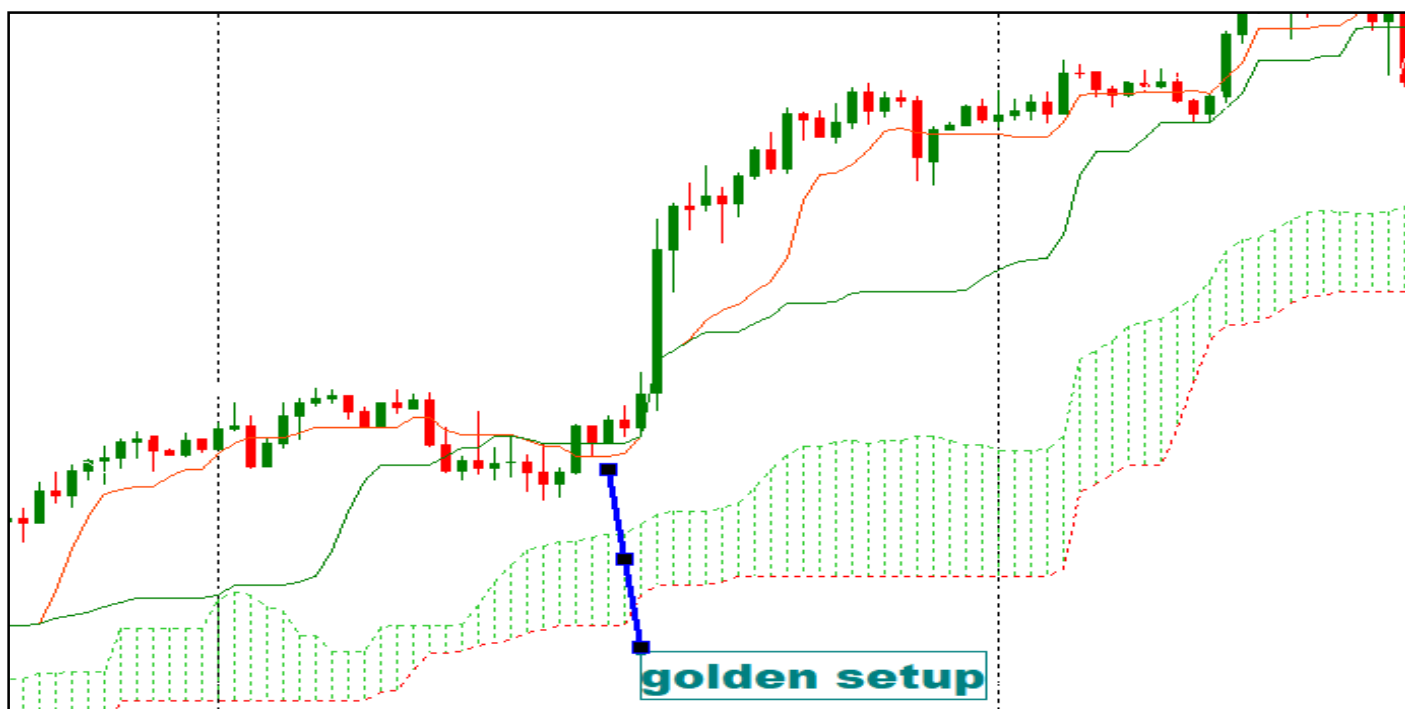


1- bullish warning

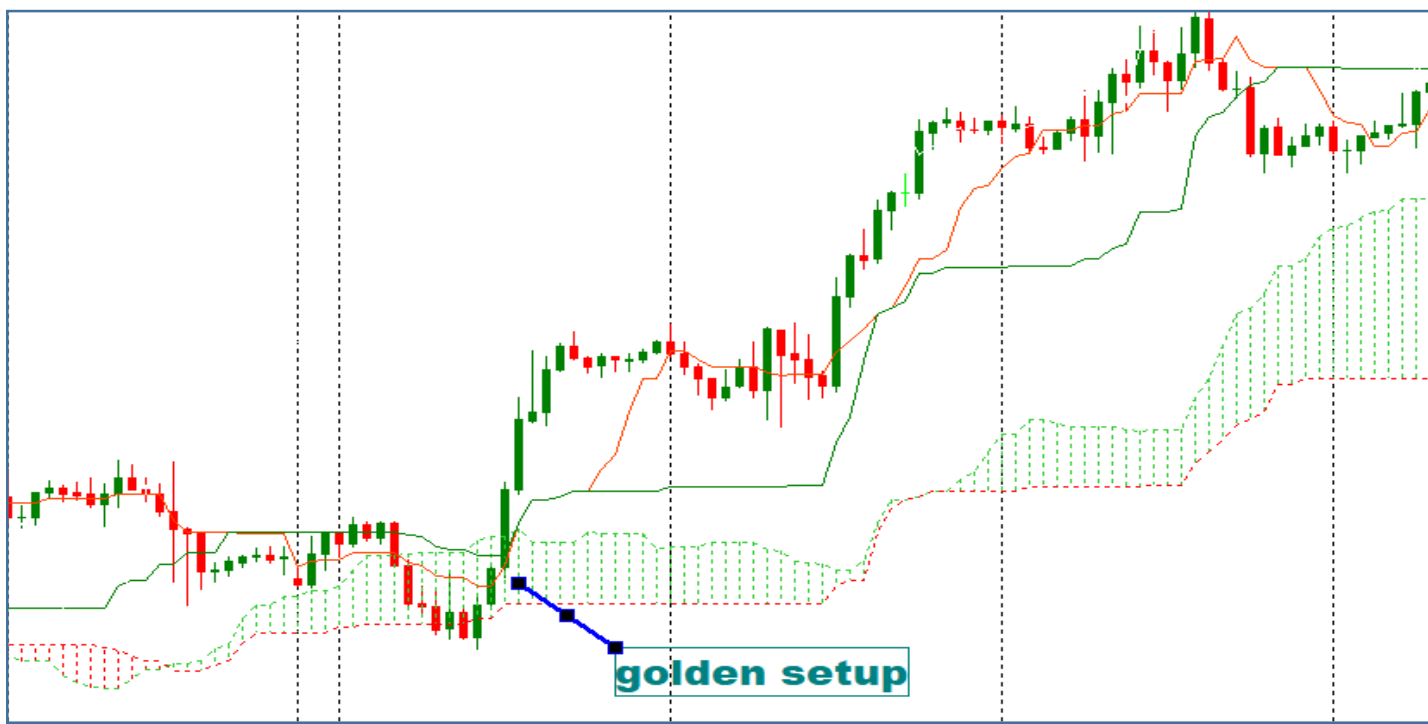
❖ 1^{er} case the price above the kumo

- price above kumo
- price first breaks tenkan-sen then breaks kijun, candle closes above kijun and above kumo cloud
- Kijun: green line
- Tenkan-sen: red line



❖ 2^{ème} case the price in the kumo

- prices in kumo
- the price first breaks the tenkan-sen then breaks the kijun, the candle closes above the kijun, and above the cloud



2- bearish warning

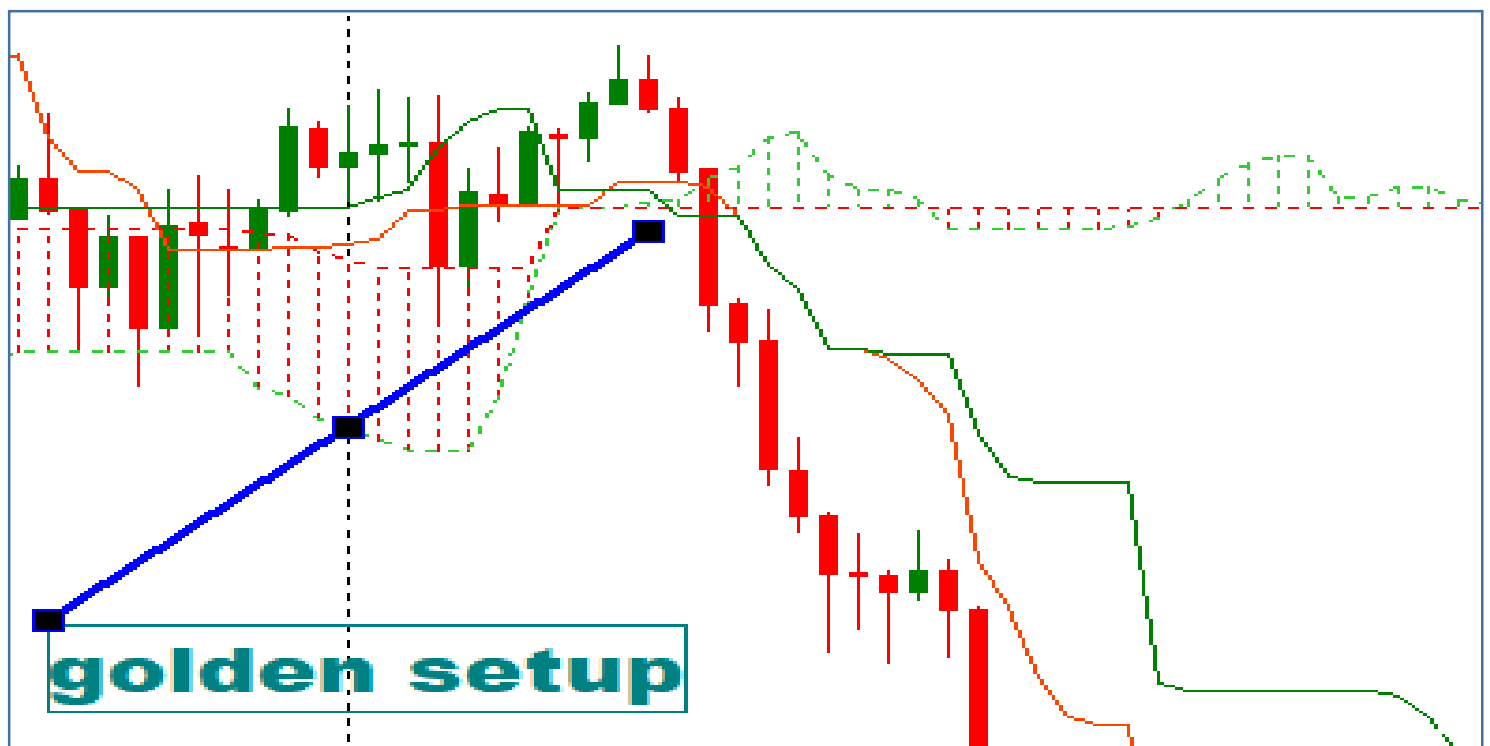
❖ 1st case the price is below the kumo

- prices below kumo
- the price first breaks the tenkan-sen and then breaks the kijun, the candle closes below the kijun and below the kumo cloud.



❖ 2nd case the course in the kumo

- prices in kumo
- price first breaks tenkan-sen then breaks kijun, candle closes below kijun, and below kumo cloud





3-closed alarm

❖ close buy alert

- price above kumo
- the price first breaks the tenkan-sen then breaks the kijun, the candle closes below the kijun.

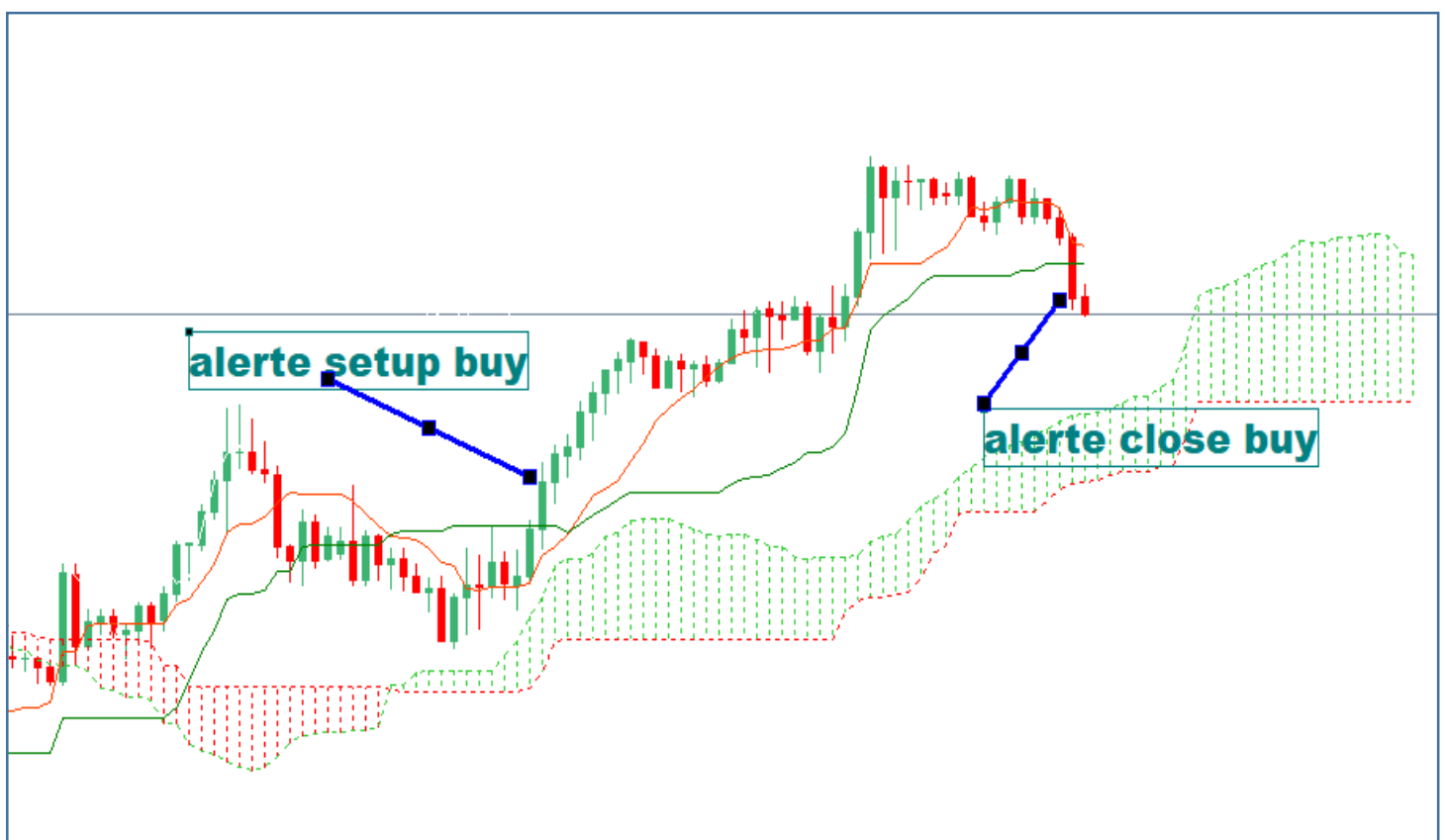


❖ close sell alert

- prices below kumo
- the price first breaks the tenkan-sen then breaks the kijun, the candle closes above the kijun.



Conclusion setup buy



Conclusion setup close

