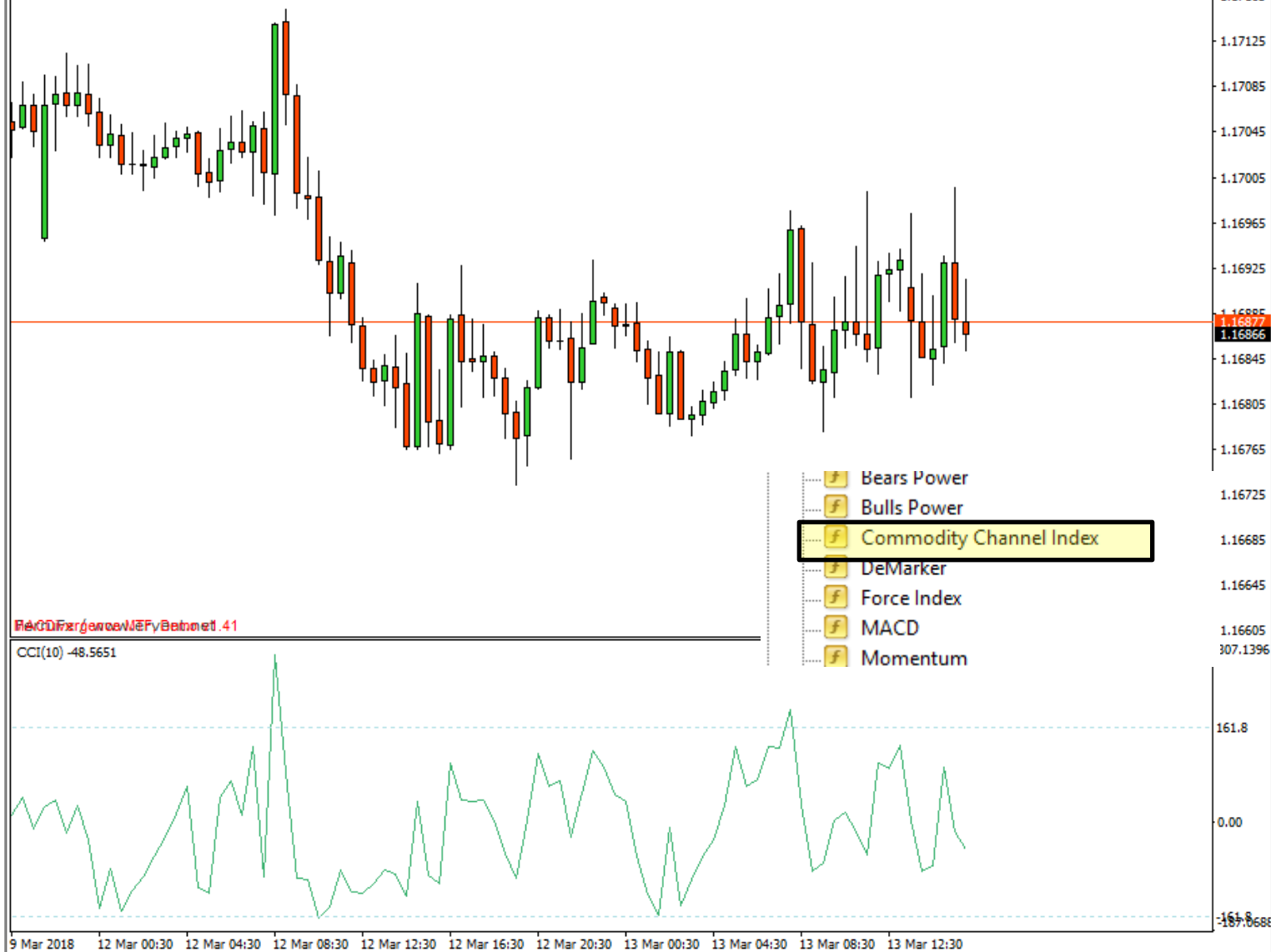
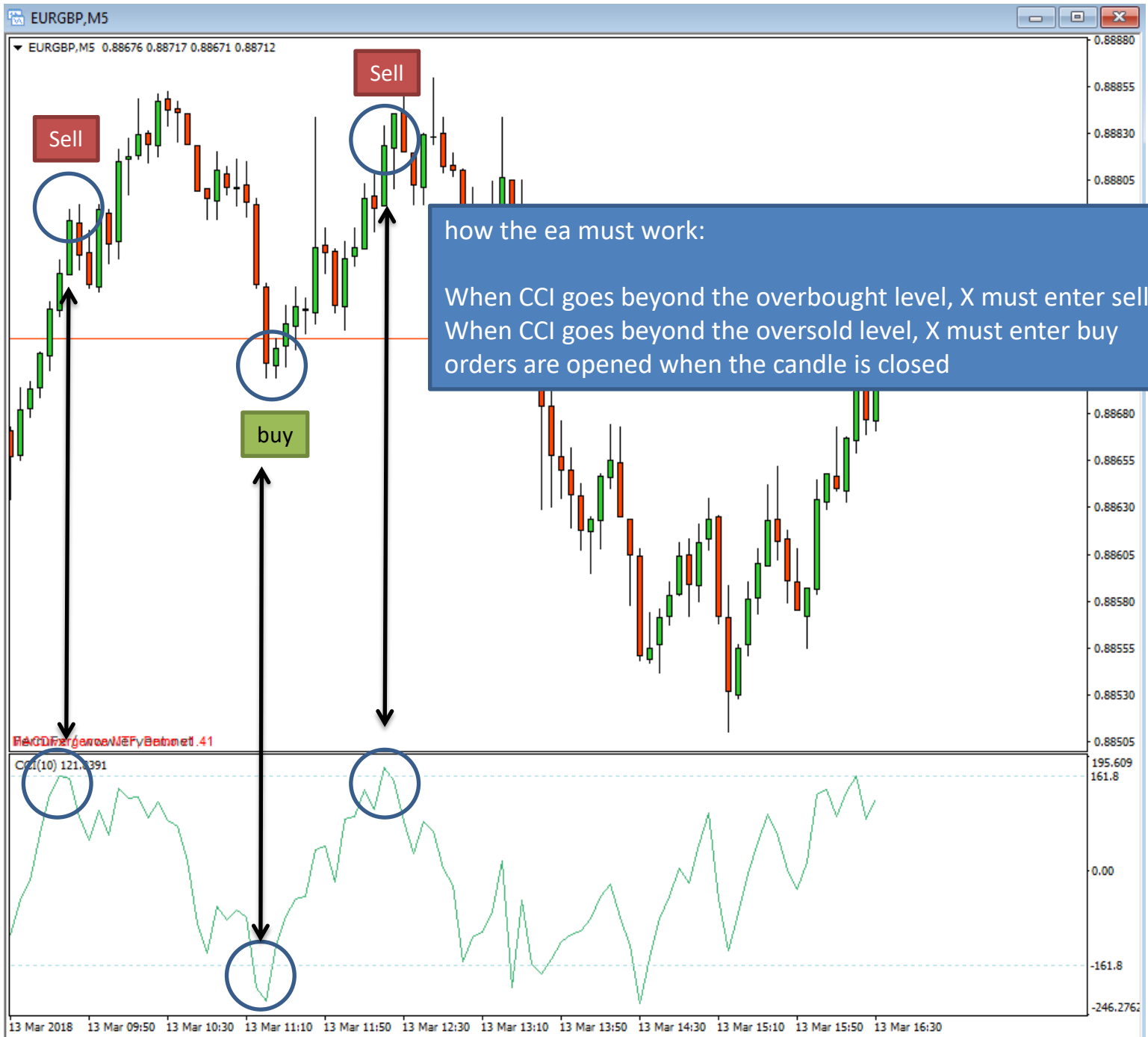


the ea must work with the commodity channel index





- Trade management:

Size: x

Take profit: x

Stop loss : x (if 0 is disabled)

<input type="checkbox"/> UseTrail	true	
<input type="checkbox"/> Trail Step		1
<input type="checkbox"/> Trail		25
<input type="checkbox"/> Start Trail		10
<input type="checkbox"/> Add_Size	true	
<input type="checkbox"/> Add_Lot		0.01
<input type="checkbox"/> After_Orders		3
<input type="checkbox"/> Every_Orders		3
<input type="checkbox"/> Add Lots Multiplier	true	
<input type="checkbox"/> Multiplier		1.3
<input type="checkbox"/> Enable Multiplier After (orders)		2
<input type="checkbox"/> Multiply Again After (orders)		2

Grid for orders (add size or multiplier) True/false

Grid width X

Lives X

<input type="checkbox"/> UseTakeProfitBreakeven	true	
<input type="checkbox"/> TakeProfitBreakeven		50

<input type="checkbox"/> UseTimeSetting	false
<input type="checkbox"/> Use_H0	true
<input type="checkbox"/> Use_H1	true
<input type="checkbox"/> Use_H2	true
<input type="checkbox"/> Use_H3	true
<input type="checkbox"/> Use_H4	true
<input type="checkbox"/> Use_H5	true
<input type="checkbox"/> Use_H6	true
<input type="checkbox"/> Use_H7	true
<input type="checkbox"/> Use_H8	true
<input type="checkbox"/> Use_H9	true
<input type="checkbox"/> Use_H10	true
<input type="checkbox"/> Use_H11	true
<input type="checkbox"/> Use_H12	true
<input type="checkbox"/> Use_H13	true
<input type="checkbox"/> Use_H14	true
<input type="checkbox"/> Use_H15	true
<input type="checkbox"/> Use_H16	true
<input type="checkbox"/> Use_H17	true
<input type="checkbox"/> Use_H18	true
<input type="checkbox"/> Use_H19	true
<input type="checkbox"/> Use_H20	true
<input type="checkbox"/> Use_H21	true
<input type="checkbox"/> Use_H22	true
<input type="checkbox"/> Use_H23	true
<input checked="" type="checkbox"/> Reverse	false

furthermore, the ea must have the possibility of being blocked for
 license expiring
 account number
 and currency

Commodity condition

all parameters must be configurable in the ea

The 'Commodity Channel Index' dialog box is shown with the 'Parametri' tab selected. It contains the following fields and controls:

- Periodo:** A text input field containing the value '10'.
- Applica a:** A dropdown menu with 'Close' selected.
- Stile:** A dropdown menu with 'MediumSeaGre' selected, accompanied by two empty dropdown menus.
- Minimo fissato:** A checkbox (unchecked) followed by a text input field containing '0'.
- Massimo fissato:** A checkbox (unchecked) followed by a text input field containing '0'.
- Buttons:** 'OK', 'Annulla', and 'Resetta' at the bottom right.

The 'Commodity Channel Index' dialog box is shown with the 'Livelli' tab selected. It contains the following elements:

Livello	Descrizione
# -138	
# 138	

- Buttons:** 'Aggiungi' and 'Cancella' to the right of the table.
- Stile:** A dropdown menu with 'PowderBlue' selected, accompanied by two empty dropdown menus.
- Buttons:** 'OK', 'Annulla', and 'Resetta' at the bottom right.

