

ADJUSTABLE PARAMETERS

=MOVING AVERAGE=

MM1 ("period", "method" and "Apply to") Red collor Line

MM2 ("period", "method" and "Apply to")orange collor Line

MM3 ("period", "method" and "Apply to")yellow collor Line

MM4 ("period", "method" and "Apply to")white collor Line

=ATR=

ATR (period)

=STOPS SIZE= (read more in page 3)

STOP LOSS BY ATR (X.ATR)

STOP GAIN BY ATR (Y.ATR)

STOP TRAILING BY ATR (Z.ATR)

=DAILY LIMIT=

STOP LOSS DAILY (in points, 0=unlimited)

STOP GAIN DAILY (in points. 0=unlimited)

=TRADES PER CONDITIONS=

ONDE DEAL PER CONDITION(true/False) (read more in page 4)

=TIME=

START TRADES (00:00)

LAST TIME TO OPEN NEW TRADE (00:00)

CLOSE TRADES IN DAY (00:00)

TRADE CONDITIONS

=ENTRYS CONDITIONS= (read more in page 2)

BUY

MM1>**MM2**

MM2>**MM3**

MM3>**MM4**

SELL

MM1<**MM2**

MM2<**MM3**

MM3<**MM4**

=EXIT CONDITIONS=

STOP GAIN are hit

STOP LOSS are hit

ANY MOVING AVERAGES CROSSING (optional, need be true/false) (read more in page 4)

TRADE CONDITIONS

EA entry in trade when:

BUY

SELL

MM1>MM2

MM1<MM2

MM2>MM3

MM2<MM3

MM3>MM4

MM3<MM4



STOP'S BY ATR

In my trades, i always use ATR to define the STOPS size (**GAIN, LOSS and TRAILING**)

To to it, firs i need set **ATR periods**, after this, i will define de value from **1ATR**

In the following example, the value of **1ATR** is **2,342**

If I use the **1x3** risk/return ratio, my stops will be **1ATRx3ATR**

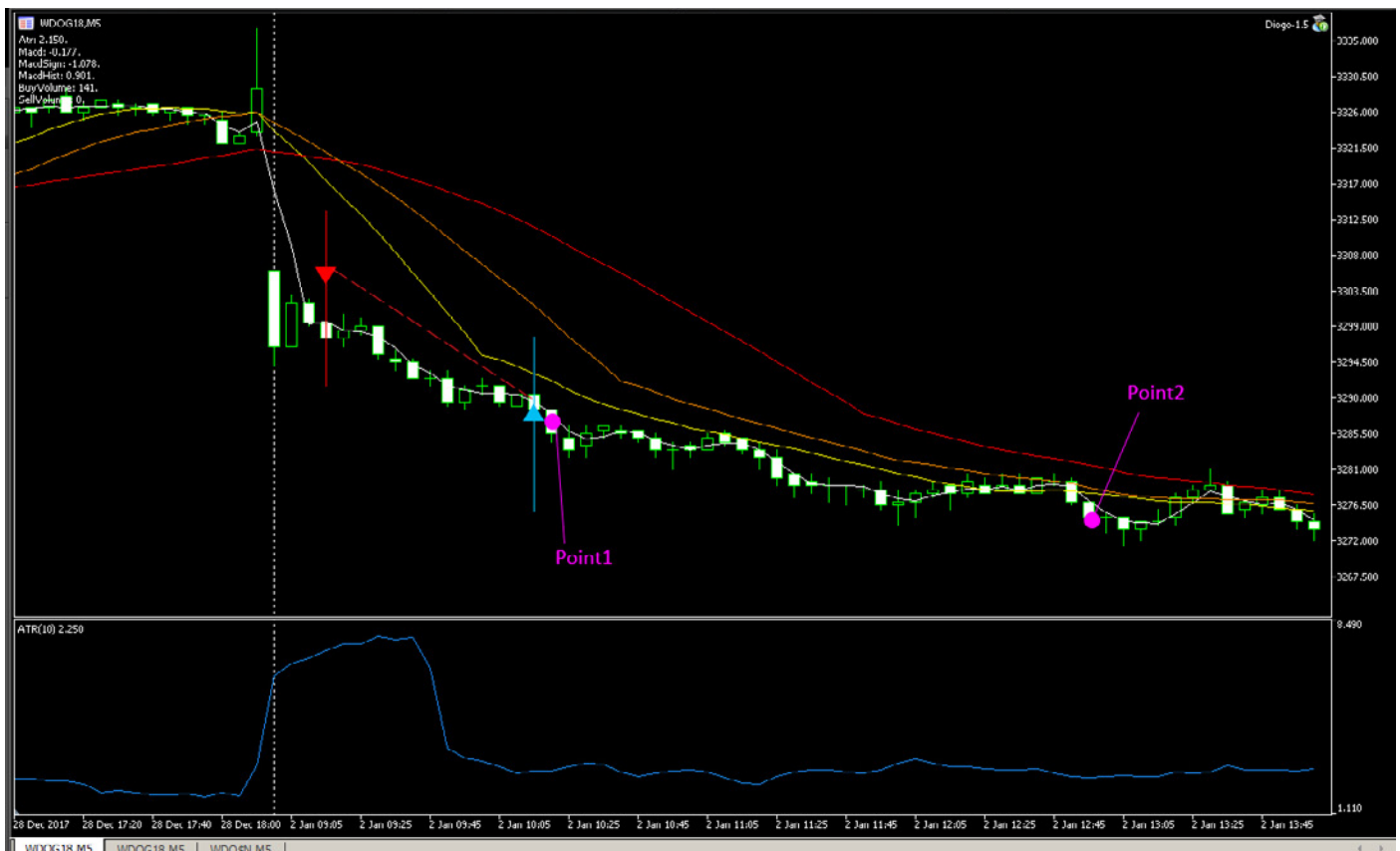
In points will it be:

1.2,342x3.2,342



TRADES PER CONDITION

If there are input conditions, the "OneDealByConditions" option will open a new order immediately (point1), or it will wait for new conditions (point2)



ANY MOVING AVERAGES CROSSING

With this option, I will decide if the trade will be finalized when there is a any crossing by moving averages, or if the trade will continue to run when there is a pullback



NEW AJUSTS

This EA needs to keep all functions equal to first version and add the following information:

- Minimum distance between moving averages
 - ADX Line Level
 - Inser TimeFrame Selection
 - EA has some bugs that need to be fixed.
- Time filter does not work as it should

TRADE CONDITIONS

EA entry in trade when:

BUY

SELL

MM1>MM2

MM1<MM2

MM2>MM3

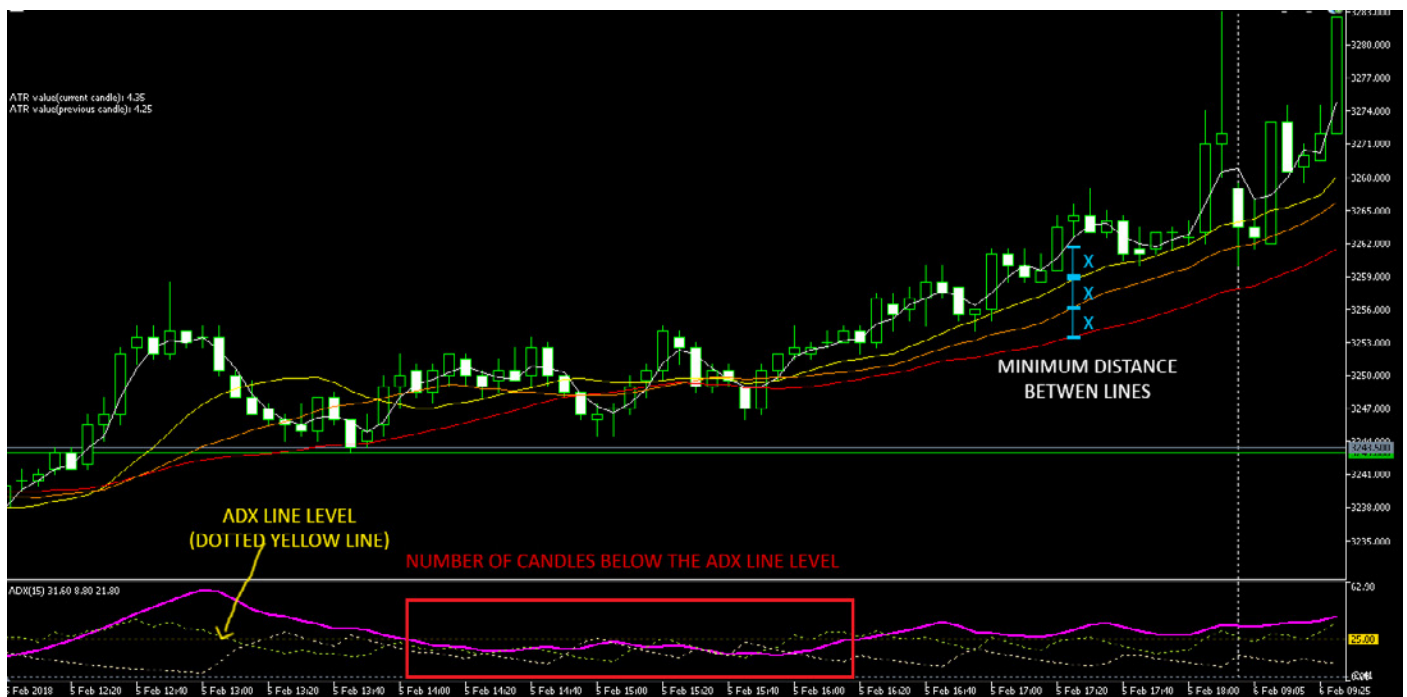
MM2<MM3

MM3>MM4

MM3<MM4

ADX > Line Limit

Distance between lines $> X$



MA_ATR_EA 1.00

Common

Inputs

| Variable | Value |
|-----------------------------|----------------------------------|
| EA Comment | MA ATR EA |
| Trade_Parameters | ====< Trade Parameters >==== |
| Entry Lots | 1 |
| ATR Period | 10 |
| Gain by ATR | 4 |
| Loss by ATR | 4 |
| Trailing by ATR | 0 |
| Daily Max Gain | 0 |
| Daily Max Loss | 0 |
| Stop by any cross | true |
| OneDealByConditions | true |
| | ====< Time Filter Settings >==== |
| Use "Time Filter" | false |
| Start Time | 00:00 |
| Last Time | 00:00 |
| Close Time | 00:00 |
| MovingAverages | ====< Moving Averages >==== |
| Time Frame | current |
| MA 1 Period | 10 |
| MA 1 Method | Simple |
| MA 1 Apply to | Close price |
| MA 2 Period | 20 |
| MA 2 Method | Simple |
| MA 2 Apply to | Close price |
| MA 3 Period | 30 |
| MA 3 Method | Simple |
| MA 3 Apply to | Close price |
| MA 4 Period | 40 |
| MA 4 Method | Simple |
| MA 4 Apply to | Close price |
| ADX period | 14 |
| ADX Line Level | In Point |
| Minimum distance between MM | In Point |
| TimeFrame | 5 Minutes |

Load

Save

OK

Cancel

Reset

Alerts

Signals

Code Base

Experts

Journal

New Insertions