

EA name: EA Real Trader

Front Parameter Interface

**Mt4 ID:** (I can change in MQL source file)

**TF Trend:** (can choose from H1 to MN)

**TF Entry:** (can choose any TF)

**RR Ratio:** (can choose 1:1, 1:2, or 1:3)

**Risk per entry:** (percentage from amount Balance)

**Lot Size:** Based on Risk per Entry

**SL (in Point) :** ( if put 100 point, SL level will be 100 point below/above Lower/Upper BB)

Indicator used

#### **Setting Moving Average**

- Period: 50
- Shift: 0
- Method: Exponential
- Apply to: Close

#### **Setting Bollinger Bands**

- Period: 20
- Deviation: 2.000
- Shift: 0
- Apply to: Close

#### **Trade Condition**

This EA will use 2 timeframe to filter entry order.

TF Trend: (I can change in Front Parameter)

Entry TF: (I can change in Front Parameter)

I can run in all pairs at the same time,

1 pair can only have 1 order at 1 time

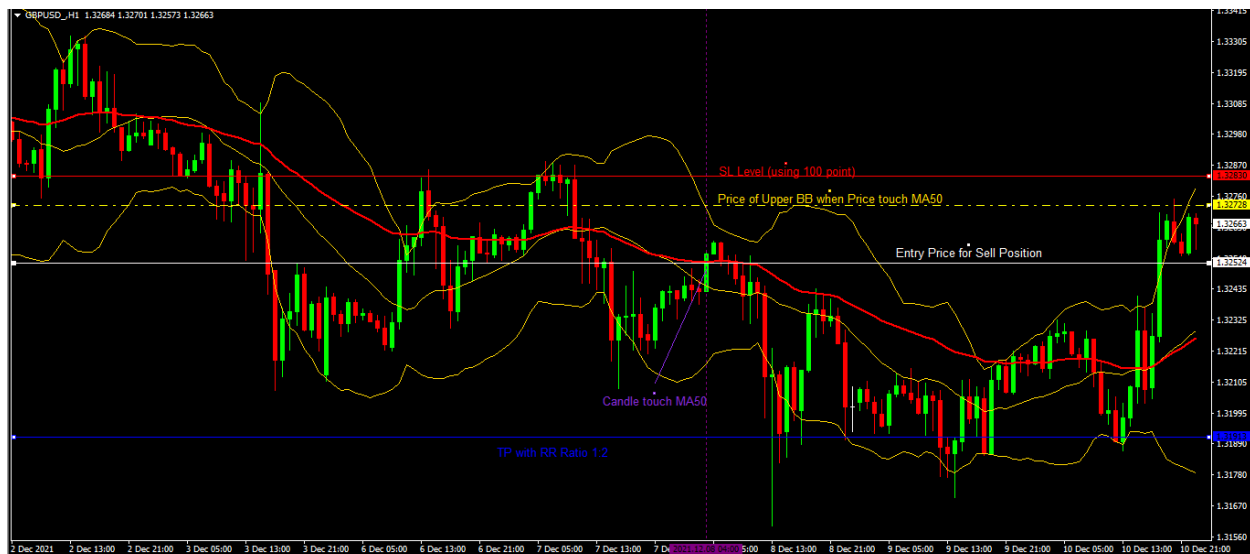
## Entry Order Conditions

### 1. Sell Order,

- Bid price must be below MA50 in TF Trend,
- Bid Price touch the MA 50 line in TF Entry,
- Lot size will be calculate based in distance between entry price to SL level
- SL above Upper BB ( Upper BB Price + SL Parameter)
- TP will be calculate based on Risk Reward Ratio.

### Example

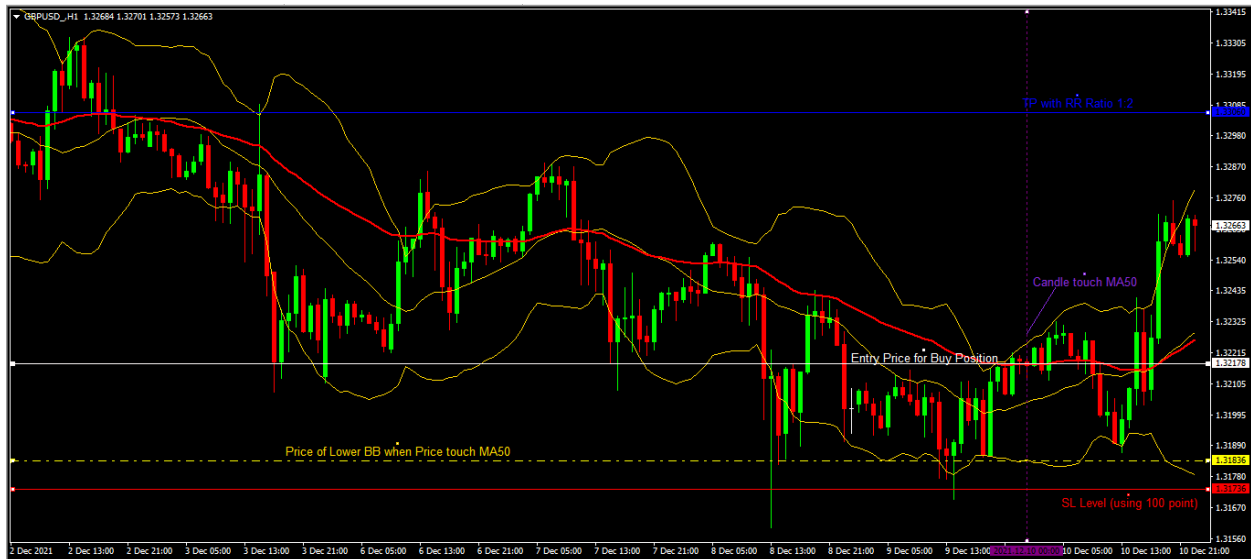
**TF Trend: H4, TF Entry: H1, RR Ratio: 1:2, Risk per entry: 1, SL (in Point): 100 , Balance 1000usd**



Based on picture above, if Order hit SL, I will lose 10usd, but if hit TP, I will get 20usd.

## 2. Buy Order,

- Bid price must be above MA50 in TF Trend,
- Bid Price touch the MA 50 line in TF Entry,
- Lot size will be calculate based in distance between entry price to SL level
- SL below Lower BB ( Lower BB Price + SL Parameter)
- TP will be calculate based on Risk Reward Ratio.



Based on picture above, if Order hit SL, I will lose 10usd, but if hit TP, I will get 20usd.