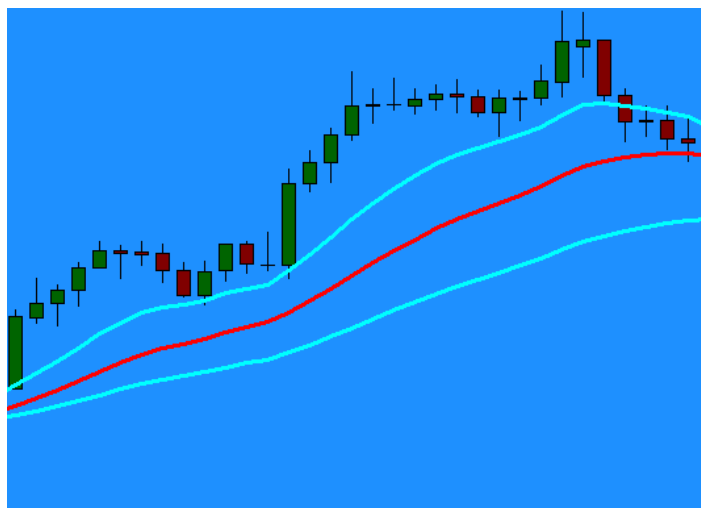


TSS – V5

<p>MA CROSS HT1</p> 	<p>When this function is enabled then the EA should watch the desired time period and look for MA cross based on the settings.</p> <p>Example – D1 timeframe, looking for Two MA cross over (13EMA x26 EMA)</p>
<p>MA CROSS HT2</p> 	<p>When this function is enabled then the EA should watch the desired time period and look for MA cross based on the settings.</p> <p>Example – H4 timeframe, looking for Two MA cross over (13EMA x26 EMA)</p>
<p>MA CROSS HT3</p> 	<p>When this function is enabled then the EA should watch the desired time period and look for MA cross based on the settings.</p> <p>Example – H1 timeframe, looking for Two MA cross over (13EMA x26 EMA)</p>

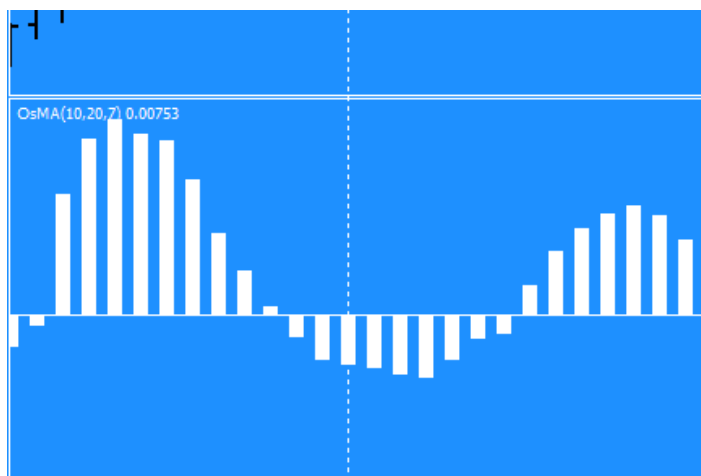
FAN ALIGNMENT



When this function is enabled then the EA should watch the desired time period and look for MA alignments based on the settings.

Example – M30 timeframe, EMA 13> EMA 26> EMA 50

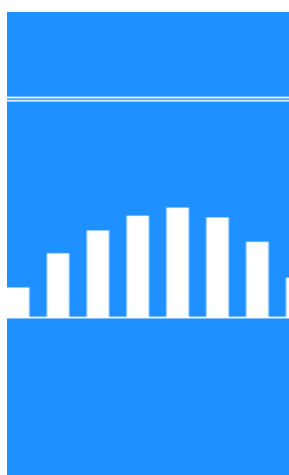
OSMA HT1-TF



When this function is enabled then the EA should watch the desired time period and look for Osma >0 for buy or <0 sell side.

Example – D1 timeframe Osma (10,20,7)

OSMA HT2-TF



When this function is enabled then the EA should watch the desired time period and look for Osma >0 for buy or <0 sell side.

Example – H4 timeframe Osma (10,20,7)

When all the above conditions are met then Momentum Signal should be issued based on the direction.

Preferred Input settings for EA

MulticheckPairs	EURUSD,GBPJPY,....for 28 symbols
PairPrefix	
PairSuffix	
MA CROSS HT1-Enable	True/False
MA CROSS HT1-TF	M1/M5/M15/H1/H4/D1/W1/MN
MA Period HT1	13
MA Method HT1	26
MA Price HT1	0
MA CROSS HT2-Enable	True/False
MA CROSS HT2-TF	M1/M5/M15/H1/H4/D1/W1/MN
MA Period HT2	13
MA Method HT2	26
MA Price HT2	0
MA CROSS HT3-Enable	True/False
MA CROSS HT3-TF	M1/M5/M15/H1/H4/D1/W1/MN
MA Period HT3	13
MA Method HT3	26
MA Price HT3	0
FAN ALIGNMENT	M1/M5/M15/H1/H4/D1/W1/MN
FAST MA Enable	True/False
MA Period Fast	13
MA Method Fast	SMA/EMA/SMMA/LWMA
MA Price Fast	0
SLOW MA Enable	True/False
MA Period SLOW	26
MA Method SLOW	SMA/EMA/SMMA/LWMA
MA Price SLOW	0
SLOWER MA Enable	True/False
MA Period SLOWER	50
MA Method SLOWER	SMA/EMA/SMMA/LWMA
MA Price SLOWER	0
OSMA HT1-TF-Enable	True/False
OSMA HT1-TF	M1/M5/M15/H1/H4/D1/W1/MN
OSMA HT1-FastEMA	10
OSMA HT1-SlowEMA	20
OSMA HT1-SignalSMA	7
OSMA HT2-TF-Enable	True/False
OSMA HT2-TF	M1/M5/M15/H1/H4/D1/W1/MN
OSMA HT2-FastEMA	10
OSMA HT2-SlowEMA	20
OSMA HT2-SignalSMA	7

TRIGGER	
TRIGGER-TF	M1/M5/M15/H1/H4/D1/W1/MN
WPR	8
OB LEVEL	-40
OS LEVEL	-60
AlertOn	True/False
AlertOnMsg	True/False
AlertOnSound	True/False
Display Settings	
xStart	50
yStart	50
xSpacing	100
ySpacing	20
Font	Arial
TextSize	12
ForntColor	
BackgroundColor	
BordorColor	
LabelColor	
UpColor	
DownColor	
EqualColor	
UpWingdingSymbol	
DownWingdingSymbol	
UseTemplate	True/False
TemplateName to be Open	TSSv5.tpl
TPL Timeframe	M1/M5/M15/H1/H4/D1/W1/MN