

After attaching EA to chart, follow these steps:

For buys: First, price needs to close below 1 or more enabled MA for at least 1 candle. Then someday price closes above this MA, open buy at beginning of following candle. Very Important: Open trade only in direction choosen in EA settings (Screenshot 1)

For sells: First, price needs to close above 1 or more enabled MA for at least 1 candle. Then someday price closes below MA, open sell at beginning of following candle. Very Important: Open trade only in direction choosen in EA settings. (Screenshot 2)

- Important: Maximum 1 Trade for every Moving Average is allowed. So with 3 MA on my chart and all enabled in EA settings, max. 3 open orders per symbol allowed (1 order per MA)
- For example when short order opened after price closed below 13 MA and later closed with profit, in this case it's allowed to open a order again at 13 MA when rules met.
- The lotsize is calculated with Risk of Equity (default 1%) and StopLoss
- EA uses a virtual (important!) trailing stop which is shown for every open order as a horizontal line on chart. Name of horizontal line is ordernumber. After orders were closed, delete this line.  
EA starts trailing after 30 Pips by default with step 30 Pips, so after 30 Pips profit, virtual Stop is at breakeven
- Exit rule: Close every trade which reaches Risk Reward Ratio of 1:3. So risking 20 Pips, close this trade when profit is 60 pips.
- The stoploss is drawn with horizontal lines and only executed when price closes below Stoploss line. Then delete line. Important: Not closing the trade when touching stoploss like the normal MT4 stops

#### Generals settings:

- Trade Direction: long/short (Dropdown menu)
- Magicnumber
- Risk of Equity (to calculate lotsize)
- Enable TrailingStop (True/false)
- Virtual Trailing start
- Virtual Trailing Step
- StopLoss for shorts at High of previous X candles
- Buffer to not set SL directly at high instead a few pips higher
- StopLoss for buys at low of previous X candles
- Buffer to not set SL directly at low instead a few pips lower
- Enable Takeprofit
- Takeprofit Pips

MA settings:

Enable MA1

MA1\_Period 13

MA1 Shift 0

MA1\_Method Exponentiell

MA1\_Apply to Close

Enable MA2

MA2\_Period 50

MA2 Shift 0

MA2\_Method Exponentiell

MA2\_Apply to Close

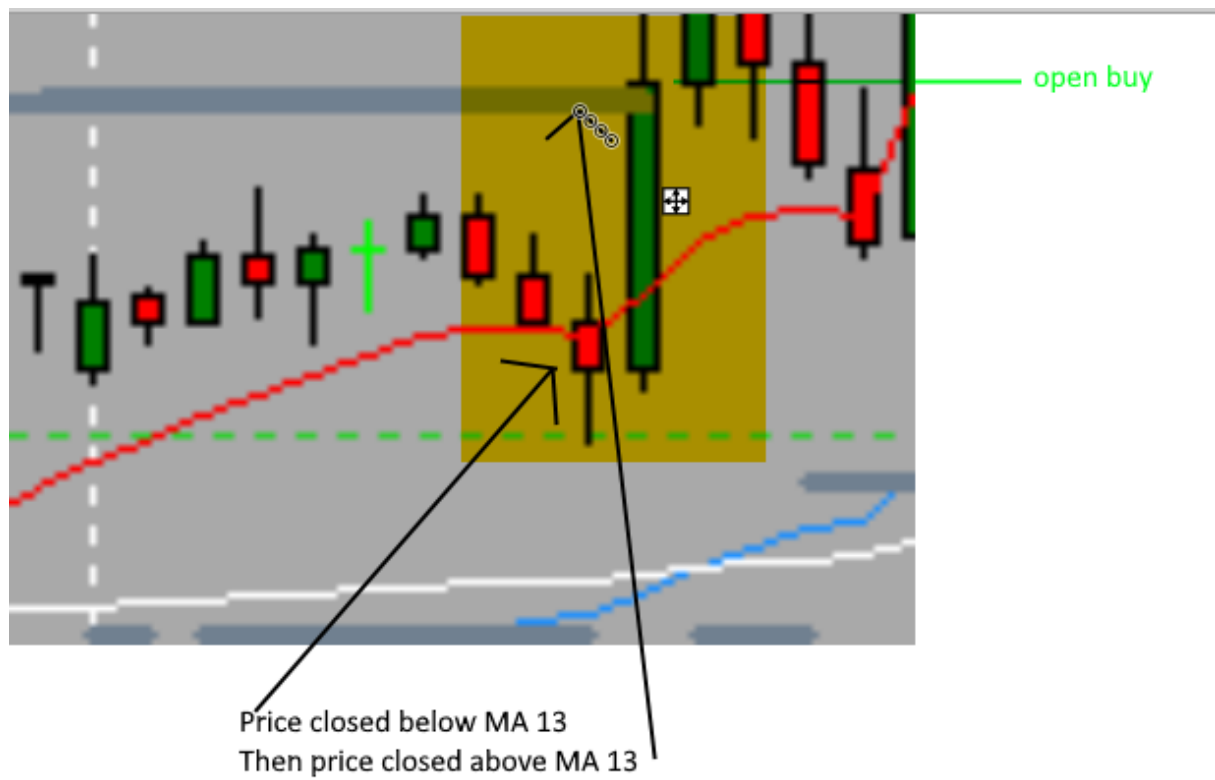
Enable MA3

MA3\_Period 200

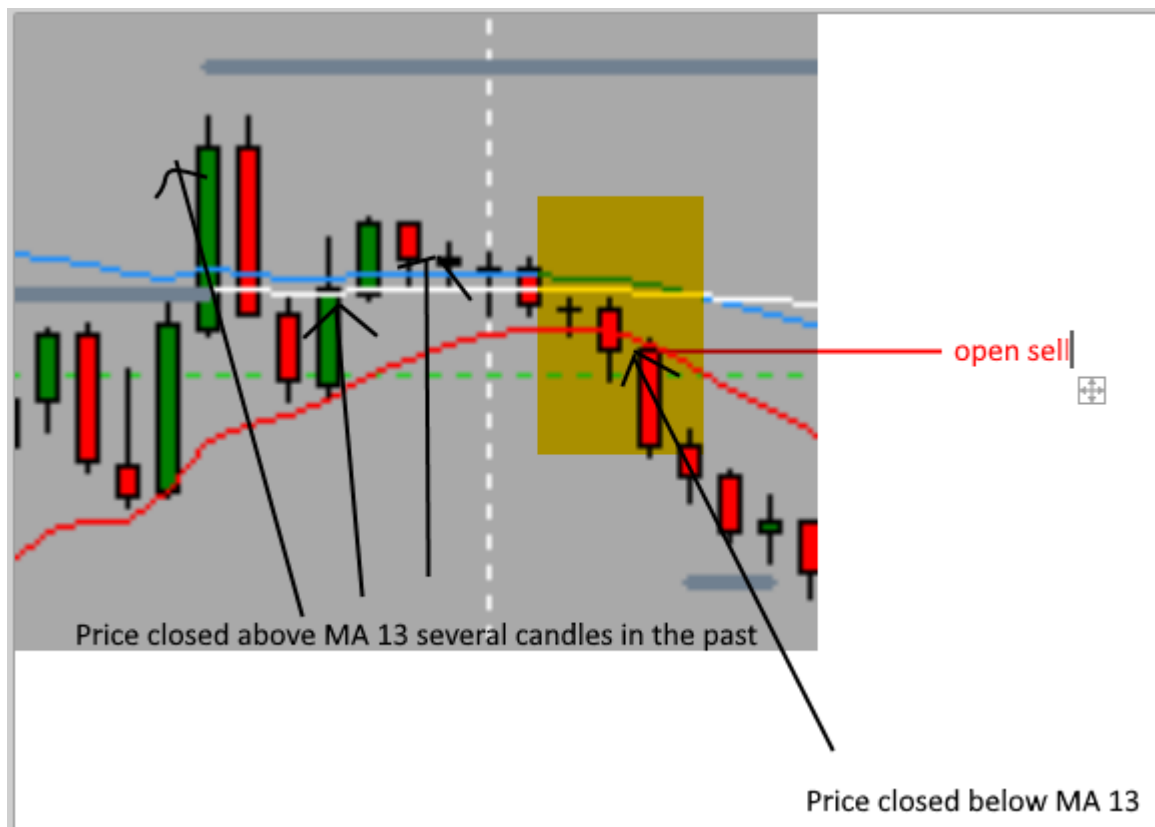
MA3 Shift 0

MA3\_Method Exponentiell

MA3\_Apply to Close



Screenshot 1



Screenshot 2