

# FOREX SSG Trading System Optimized for 30m and higher timeframes

## Installation and Setup

Forex SSG Strategy is a Bundle of plug-ins that requires MetaTrader 4 to function.

If you already have MetaTrader 4 installed, place the following files:

Indicators goes:

into **C:/Program Files/xxxxx/experts/indicators**, where **xxxxx** is the name of your MT4.

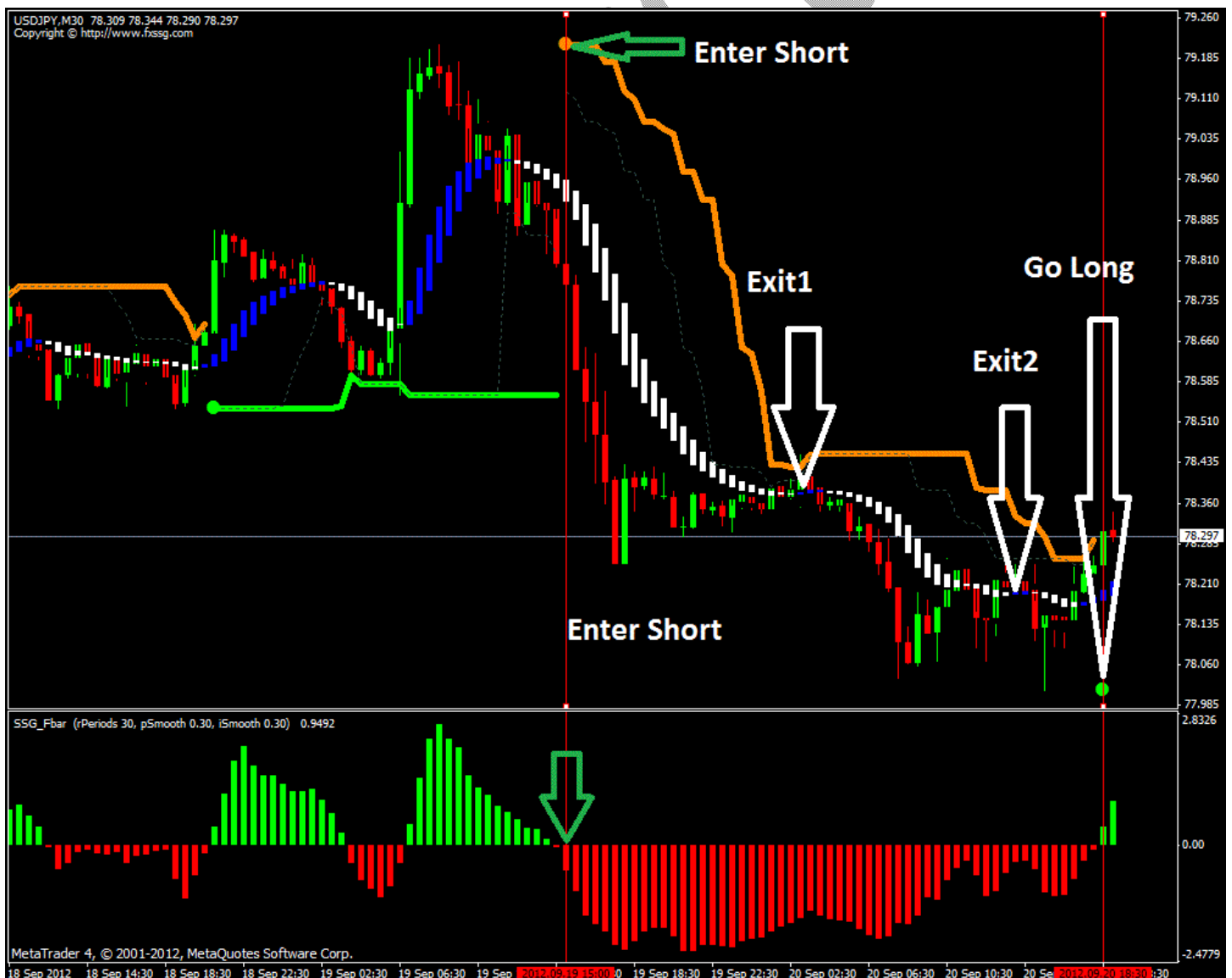
**For example**, the MT4 from FxPro is called **FxPro - MetaTrader**, and the complete

Template goes:

into **C:/Program Files/xxxxx/templates**, where **xxxxx** is the name of your MT4.

When you finish restart your MT4 platform for changes to apply. (load template)

### Trade example: Chart nr1



## Entry:

Go short:

SSG Bline agree with SSG Fbar so as SSG HASignal is at sell direction.

1. SSG Bline Draw orange big dot as a direction change(WILL NOT REPAINT). **Main indicator**
2. SSG Fbar cross 0 and goes below drawing red bar.
3. SSG HASignal is at confirmed direction white bars.

Talking about stoploss it is hard to tell. It depends on your money management rules. You could use previous high or low for placing stoploss. Also a trailing stop is a good choice.

In picture you can see Exit1 and Exit2. These are the points at which you could take profit (SSG HASignal) bar change. Or you can wait for SSG Bline change to exit the trade.

The point is that market tend to retrace and it is up to you how fast and how many pips you want to steal.

System DOES NOT REPAINT so you will get 84+ success in trades following strict rules.

We highly recommend when doing your first trade to use a system on a demo account to get to know how everything works.

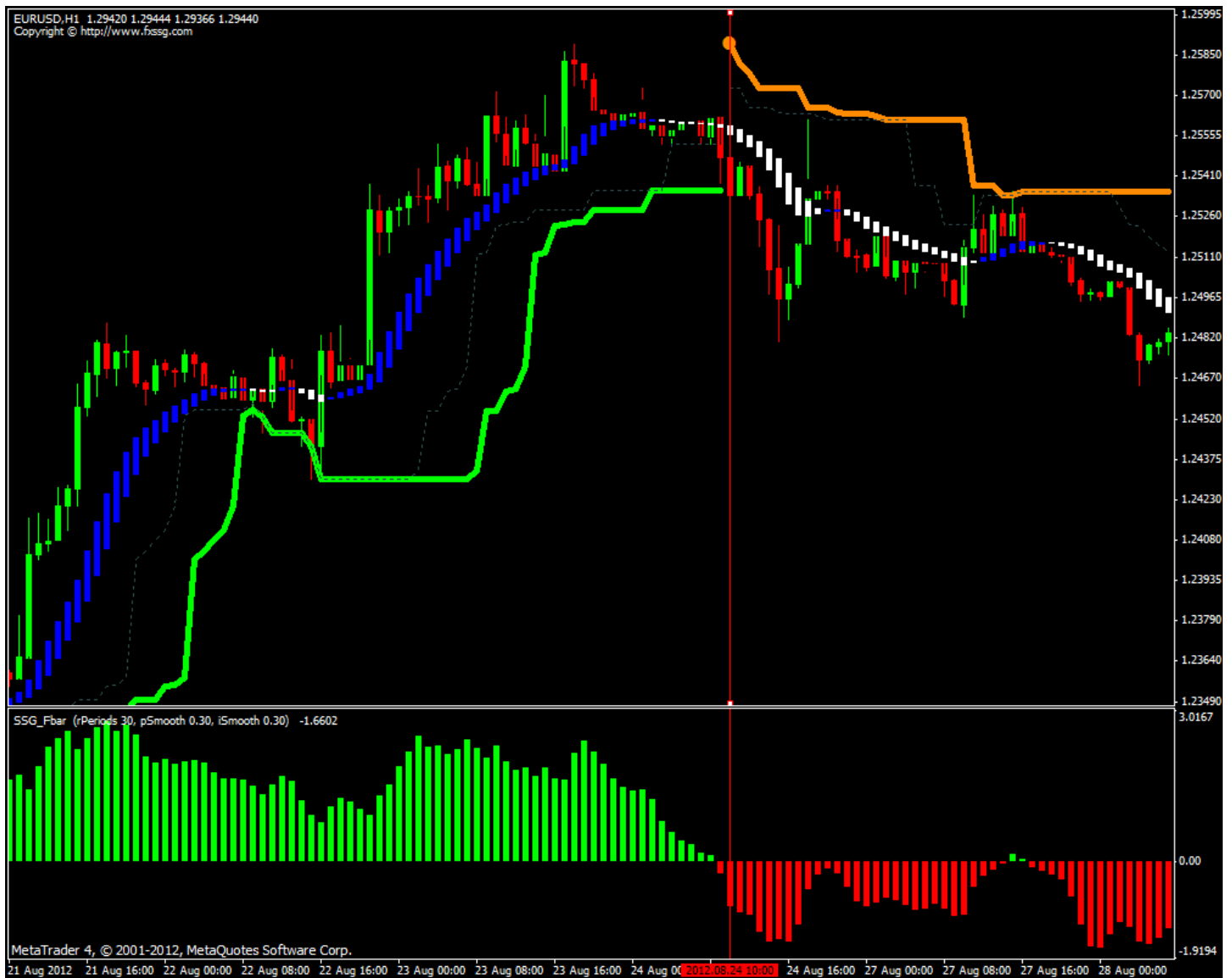
Okay lets turn on false signals and sideways market. Examples below:

### Chart nr2



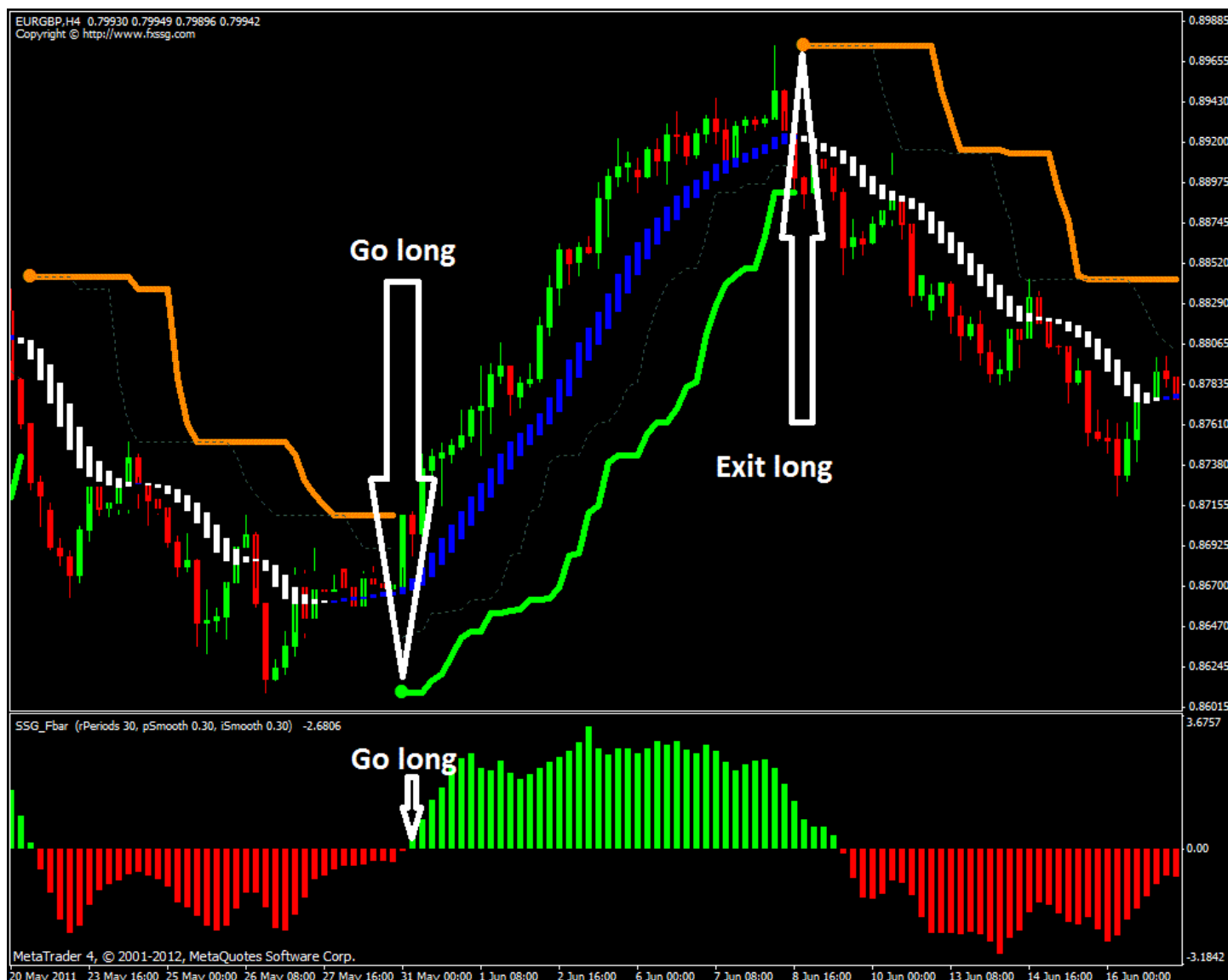
Picture above SSG Bline disagree with SSG Fbar and this is mostly sideways market sign. You should stay away from such situations.

### Chart nr3



Above another clear short set up.

## Chart nr4



SSG Bline agree with SSG Fbar so as SSG HASignal is at buy direction.

1. SSG Bline Draw green big dot as a direction change(WILL NOT REPAINT). **Main indicator**
2. SSG Fbar cross 0 and goes above drawing green bar.
3. SSG HASignal is at confirmed direction blue bars.

One thing you should know is that system has settings. With a template it comes at custom settings which is optimized to work best from 30min to daily timeframe. If you will load indicators manually from indicators list you will not get settings as in pictures above. So we recommend you to load template first before backtesting indicators alone with other settings by your choice.

SSG Bline and SSG Fbar both comes with alert function also email alert included.

Talking about trading pairs it is clear for all that our system will work best with less volatility pairs as other strategies...

If you will have any questions feel free to contact us:

[info@fxssg.com](mailto:info@fxssg.com)

[support@fxssg.com](mailto:support@fxssg.com)

Good luck trading!  
FXSSG Team

FXSSG System