

GoldenEA-V1.0

GeneralSetting

Licence:

Gives and removes access to some trading accounts

MagicNumber:

If it's better to have a MagicNumber, then add this option between "Licence" and "EaComment". If we can change it, this will be interesting. I do not want unethical brokers to know that trades are linked to a robot.

EaComment:

Comment showing on every trade

Strategy:

Dropdown menu with every strategy

"ReboundS/R" = Strategy Activation + the option of this strategy in ***Strategy***

"BreakoutS/R" = Strategy Activation + the option of this strategy in ***Strategy***

"BreakoutMovingAverage " = Strategy Activation + the option of this strategy in ***Strategy**

Strategy	***Strategy***
ReboundS/R	ReboundS/R
SelectIndicator	BARRY
UseTimeFrame	M15
PipsAfterReboundS/R	0
BreakoutS/R	BreakoutS/R
SelectIndicator	BARRY
UseTimeFrame	M15
Risk	Low
BreakoutMovingAverage	BreakoutMovingAverage
UseTimeFrame	M15
Risk	Low
CheckLastCandlesticksClosePrise	0
Period	200
Shift	0
Method	Simple
ApplyTo	Close

HiddenSL/TP:

Hides TakeProfit and StopLoss

MaxSlippage:

Maximum allowed slippage

0 = false

MaxSpread:

Maximum allowed spread

0 = false

MaxTradeAccount:

Maximum amount of open trades at the same time on the account

0 = false

MaxTradeChart

Maximum amount of open trades at the same time on the chart (for example: if the robot is on the EUR/USD chart and MaxTradeChart is greater than "0", for example "2", the robot will not open more than 2 trades on THIS chart) AND the strategies have no trade restriction, therefore, to limit trades, the parameter "MaxTradeChart" must be enabled

0 = false

InvertTrade:

true = The robot inverts the direction of the trades in the strategy (for example: the indicators of the strategy indicate "Buy", so the robot opens a "Sell" And the Take Profit and Stop Loss SET MANUALLY in the robot settings will reverse. If I set example TakeProfit: 6, the 6 turns into StopLoss

CloseOnlyOnProfit:

true = Deactivation of the StopLoss of the strategy to close in profit, but does not deactivate the "StopLoss" set manually

Recovery:

true = Activation of

"RecoveryAfterPips"

"RecoveryTradeLots"

"RecoveryTakeProfit"

"RecoveryStopLoss"

RecoveryAfterPips:

The robot opens ONLY 1 trade per losing position in the same direction after the number of pips selected

RecoveryTradeLots:

Lot size of the recovery trade

RecoveryTakeProfit:

When the recovery trade hits the TakeProfit, the robot closes the recovery trade + the original trade

RecoveryStopLoss:

When the recovery trade hits the StopLoss, the robot closes the recovery trade + the original

NoHedge:

true = the robot does not open trades in the opposition direction no matter the strategy (NoHedge and UseHedge are not linked)

UseHedge:

false = deactivation of

"HedgeAfterPips"

"HedgeTakeProfit"

"HedgeStopLoss"

HedgeAfterPips:

The robot opens a trade in the opposite direction after the number of pips selected

HedgeTakeProfit:

When the Hedge trade hits the TakeProfit, the robot closes the Hedge trade + the original trade

HedgeStopLoss:

When the Hedge trade hits the StopLoss, the robot closes the StopLoss trade + the original trade

*****RiskManagement*******FixedLots:**

Lot size for every trade (if UseRisk is greater than 0, "FixedLots" is not taken into account)

UseRisk:

Automatic risk management activates at values greater than 0:

Example 1: at UseRisk = 2, GoldenEA opens positions equal to 0.2 lots (20,000) given account extent of 10,000. This places 2 percent of the account extent at risk per individual transaction at a loss of 100 pips.

Example 2: at UseRisk = 10, GoldenEA opens positions equal to 1 lot (100,000) given account extent of 10,000. This places 10 percent of the account extent at risk per individual transaction at a loss of 100 pips.

MaxRisk:

the maximum permitted risk expressed as a percentage of the account per individual transaction, calculated on the basis of a 100 pip loss.

0 = false

TakeProfitPips:

TakeProfit of trades in pips (does not deactivate the TakeProfit of the strategies)

0 = false

StopLossPips:

StopLoss of trades in pips (does not deactivate the StopLoss of the strategies)

0 = false

TakeProfitDollar:

TakeProfit des trades en dollars (does not deactivate the TakeProfit of the strategies)

0 = false

StopLossDollar:

StopLoss of trades in dollars (does not deactivate the StopLoss of the strategies)

0 = false

TrailingStopLossPipsStart:

Number of pips of the beginning of "TrailingStopLossStep" (does not deactivate the StopLoss of the strategies)

0 = false

TrailingStopLossStep:

Number of pips of every TrailingStopLoss

0 = false

TrailingStopLossLastCandlestick:

true = Activation of

"TrailingStopLossLastCandlestick"

(does not deactivate the StopLoss of the strategies)

TrailingStopLossLastCandlestick:

0 = the price of the last candlestick.

1 = the price of the last candlestick -1 pips

2 = the price of the last candlestick -2 pips

(At every candlestick, the StopLoss changes)

TotalProfitDollarCloseAllTrade:

When profits reach the selected amount (in dollars), every trade is closed and the robot is deactivated for the rest of the day and starts again at 00:00

0 = false

TotalLossDollarCloseAllTrade:

When losses reach the selected amount (in dollars), every trade is closed and the robot is deactivated for the rest of the day and starts again at 00:00

0 = false

TotalProfitPipsCloseAllTrade:

When profits reach the selected amount (in pips), every trade is closed and the robot is deactivated for the rest of the day and starts again at 00:00

0 = false

TotalLossPipsCloseAllTrade:

When losses reach the selected amount (in pips) every trade is closed and the robot is deactivated for the rest of the day and starts again at 00:00

0 = false

*****Strategy*****

Rebound S/R:

Title of the strategy

SelectIndicator :

Select which indicator will use the robot "Support_Resistance_Barry", "vS_PivotsD_v4" and "Support and Resistance # TLB OC v02" (View the image on the last page)

UseTimeFrame:

Select which Support and Resistance will use the robot

UseTimeFrame: M15 = the robot will use the M15 Support and Resistance even if the robot is on the M1 chart

PipsAfterRebounds/R :

The number of pips after the rebound

0 = no rebound, the position opens directly by touching the support / resistance

1 = 1pips after the rebound

BreakoutS/R:

Title of the strategy

SelectIndicator :

Select which indicator will use the "Support_Resistance_Barry", "vS_PivotsD_v4" and "Support and Resistance # TLB OC v02" (View the image on the last page)

UseTimeFrame:

Select which Support and Resistance will use the robot

UseTimeFrame: M15 = the robot will use the M15 Support and Resistance even if the robot is on the M1 chart

Risk:

Select which risk to take for the strategy "BreakoutS / R" check PDF "EN (Strategies) GoldenEA-V1.0"

"Low"

"Medium"

"High"

BreakoutMovingAverage:

Title of the strategy

UseTimeFrame:

Select which Time Frame of Moving Average use the robot

UseTimeFrame: M15 = the robot will use the M15 Moving Average even if the robot is on the M1 chart

Risk:

Select which risk to take for the strategy "BreakoutMovingAverage" check PDF "EN (Strategies) GoldenEA-V1.0"

"Low"

"Medium"

"High"

CheckLastCandlesticksClosePrice:

The robot checks the number of the last candlestick selected. (DO NOT INCLUDE THE LAST ONE)

"CheckLastCandlesticksClosePrice" 10 = If the last 10 candlesticks have CLOSED below the MovingAverage, the robot can only Buy (DO NOT INCLUDE THE LAST ONE, BUT INCLUDE THE 10 CANDLESTICKS BEFORE THE LAST ONE)

"CheckLastCandlesticksClosePrice" 5 = If the last 5 candlesticks have CLOSED above the MovingAverage, the robot can only sell (DO NOT INCLUDE THE LAST ONE, BUT INCLUDE THE 5 CANDLESTICKS BEFORE THE LAST ONE) (View the image on the last page)

0 = false

Period:

Default 200

Shift:

Default 0

Method:

Select between ...

"Simple"

"Exponential"

"Smoothed"

"LinearWeighted"

ApplyTo:

Select between ...

“Close”

“Open”

“High”

“Low”

“MedianPrice(HL/2)”

“HighTypicalPrice(HLC/3)”

“WeightedClose(HLCC/4)”

“PreviousIndicator'sData”

*****IndicatorFilters*****

*Note: the following indicators add a setting to the trade of each strategy if they are set to “true”. The indicators do not delete the indicators of the strategy. They are ADDED to the strategy. And the robot must take into account ALL the indicators a "true" and the criteria of the strategies.

UseRSI:

True = Activation of

“SellAbove/BuyBelow” in “Use”

“BuyAbove/SellBelow” in “Use”

“Period”

SellAbove/BuyBelow: in “Use”

Activation of

“SellAbove”

“BuyBelow”

UseRSI	false
Use	SellAbove/BuyBelow
SellAbove	<u>70</u>
BuyBelow	<u>30</u>
BuyAbove	0
SellBelow	0
Period	7
UseCCI	false

BuyAbove/SellBelow: in "Use"

Activation of

"BuyAbove"

"SellBelow"

UseRSI	false
Use	BuyAbove/SellBelow
SellAbove	70
BuyBelow	30
BuyAbove	<u>0</u>
SellBelow	<u>0</u>
Period	7
UseCCI	false

SellAbove:

Sell above 70

BuyBelow:

Buy below 30

BuyAbove:

Buy above 0

SellBelow:

Sell below 0

Period:

Default 7

UseCCI:

True = Activation of

"SellAbove/BuyBelow" in "Use"

"BuyAbove/SellBelow" in "Use"

"Period"

SellAbove/BuyBelow: in "Use"

Activation of

"SellAbove"

"BuyBelow"

BuyAbove/SellBelow: in "Use"

Activation of

"BuyAbove"

"SellBelow"

SellAbove:

Sell above 100

BuyBelow:

Buy below -100

BuyAbove:

Buy above 0

SellBelow:

Sell below 0

Period:

Default 14

UseStochastic:

True = Activation of

"SellAbove/BuyBelow" in "Use"

"BuyAbove/SellBelow" in "Use"

"K"

"D"

"Slowing"

SellAbove/BuyBelow: in "Use"

Activation of

"SellAbove"

"BuyBelow"

BuyAbove/SellBelow: in "Use"

Activation of

"BuyAbove"

"SellBelow"

SellAbove:

Sell above 70

BuyBelow:

Buy below 30

BuyAbove:

Buy above 0

SellBelow:

Sell below 0

K:

Default 5

D:

Default 3

Slowing:

Default 3

UseTrendWave:

True = Activation of

"SellAbove/BuyBelow" in "Use"

"BuyAbove/SellBelow" in "Use"

"Period"

SellAbove/BuyBelow: in “Use”

Activation of

“SellAbove”

“BuyBelow”

BuyAbove/SellBelow: in “Use”

Activation of

“BuyAbove”

“SellBelow”

SellAbove:

Sell above 45

BuyBelow:

Buy below -45

BuyAbove:

Buy above 0

SellBelow:

Sell below 0

UseBollingerBandsAverage:

True = Activation of

“SellAbove/BuyBelow” in “Use”

“BuyAbove/SellBelow” in “Use”

SellAbove/BuyBelow: in “Use”

Sell above the center line (View the image on the last page)

Buy below the center line (View the image on the last page)

BuyAbove/SellBelow: in “Use”

Buy above the center line (View the image on the last page)

Sell below the center line (View the image on the last page)

M1CandlestickDirection:

Synchronization of the indicator "Candle_Direction.mq4" on the M1 timeframe with the other indicators and the strategies (View the image on the last page)

M5CandlestickDirection:

Synchronization of the indicator "Candle_Direction.mq4" on the M5 timeframe with the other indicators and the strategies (View the image on the last page)

M15CandlestickDirection:

Synchronization of the indicator "Candle_Direction.mq4" on the M15 timeframe with the other indicators and the strategies (View the image on the last page)

M30CandlestickDirection:

Synchronization of the indicator "Candle_Direction.mq4" on the M30 timeframe with the other indicators and the strategies (View the image on the last page)

H1CandlestickDirection:

Synchronization of the indicator "Candle_Direction.mq4" on the H1 timeframe with the other indicators and the strategies (View the image on the last page)

H4CandlestickDirection:

Synchronization of the indicator "Candle_Direction.mq4" on the H1 timeframe with the other indicators and the strategies (View the image on the last page)

D1CandlestickDirection:

Synchronization of the indicator "Candle_Direction.mq4" on the D1 timeframe with the other indicators and the strategies (View the image on the last page)

W1CandlestickDirection:

Synchronisation de l'indicateur "Candle_Direction.mq4" sur le timeframe W1 avec les autres indicateurs et les strategies (View the image on the last page)

MNCandlestickDirection:

Synchronization of the indicator "Candle_Direction.mq4" on the MN timeframe with the other indicators and the strategies (View the image on the last page)

*****TimeManagement*******AutoCalculationGMT:**

true = Robot calculates time automatically

StartDay:

The robot starts trading the selected day (dropdown menu with days of the week)

EndDay:

The robot stops trading the selected day (dropdown menu with days of the week)

StartHour:

The robot starts trading at the selected hour during the days selected in "StartDay" and "EndDay" (0-24)

EndHour:

The robot stops trading at the selected hour during the days selected in "StartDay" and "EndDay" (0-24)

LastTrade:

true = Activation of

"LastTradeDay"

"LastTradeHour"

"TimeDisableEA"

LastTradeDay:

Day of the last trade (the robot continues to manage open trades (dropdown menu with days of the week)

LastTradeHour:

Hour of the last trade (the robot continues to manage open trades) (0-24)

TimeDisableEA:

Time of deactivation of the EA in hours (the robot continues to manage open trades)

0 = false

CloseAllTrade:

True = Activation of

"CloseAllTradeDay"

"CloseAllTradeHour"

"TimeDisableEA"

CloseAllTradeDay:

Closing day of every open trade (dropdown menu with days of the week)

CloseAllTradeHour:

Closing hour of every open trade (0-24)

TimeDisableEA:

Time of deactivation of the EA in hours

0 = false

TradeSidney:

Summer (approx. April - October) 22h00 - 7h00 GMT

Winter (approx. October - April) 21h00 – 6h00 GMT

false = The robot does not trade on the session of Sidney and the hours of the session of Sidney will not be taken into account

"StartDay"

"EndDay"

"StartHour"

"EndHour"

TradeTokyo:

Summer (approx. April - October) 23h00 - 8h00 GMT

Winter (approx. October - April) 23h00 – 8h00 GMT

False = The robot does not trade on the session of Tokyo and the hours of the session of Tokyo will not be taken into account

"StartDay"

"EndDay"

"StartHour"

"EndHour"

TradeLondon:

Summer (approx. April - October) 7h00 - 16h00 GMT

Winter (approx. October - April) 8h00 – 17h00 GMT

False = The robot does not trade on the session of London and the hours of the session of London will not be taken into account

"StartDay"

"EndDay"

"StartHour"

"EndHour"

TradeNewYork:

Summer (approx. April - October) 12h00 - 21h00 GMT

Winter (approx. October - April) 13h00 – 22h00 GMT

False = The robot does not trade on the session of New York and the hours of the session of New York will not be taken into account

"StartDay"

"EndDay"

"StartHour"

"EndHour"

Images

Candle_Direction.mq4:

"M1CandlestickDirection" true

"M5CandlestickDirection" true

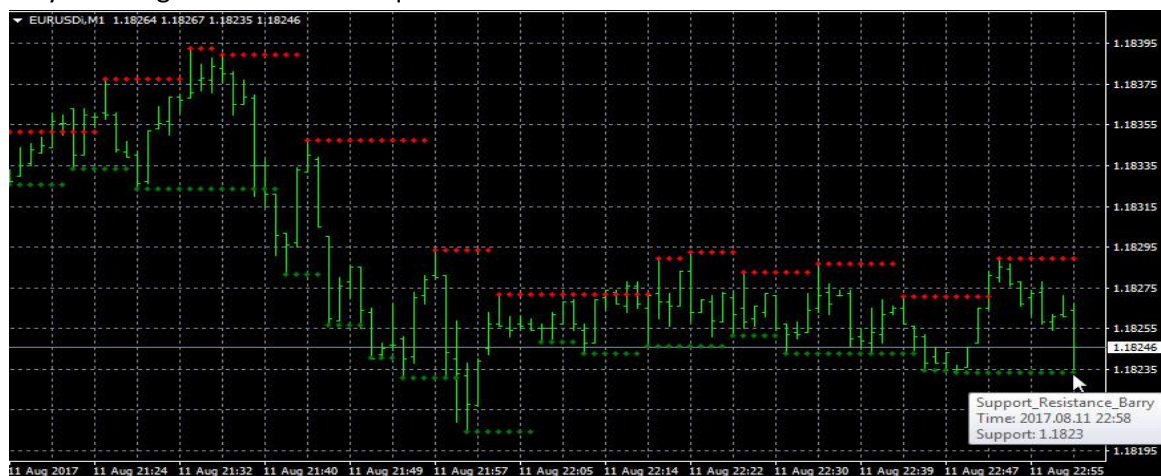
"M15CandlestickDirection" true

= The robot can only sell because the squares "M1", "M5" and "M15" are red



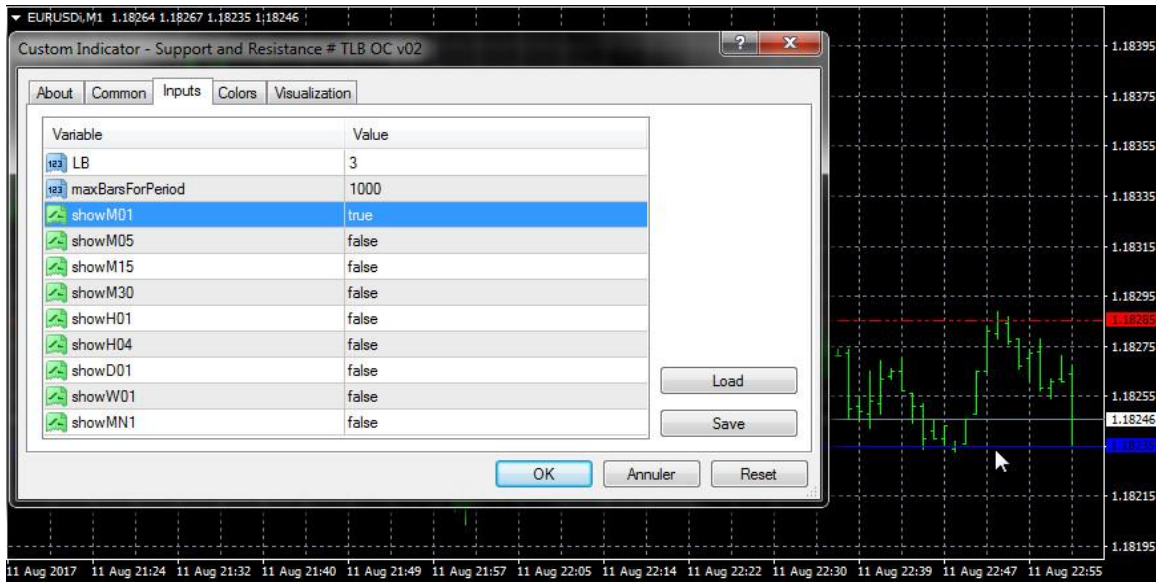
Support_Resistance_Barry :

Indicator "Support_Resistance_Barry" works with 4 digits. So I think you need take into account only the 4 digits of the broker's quotation



Support and Resistance # TLB OC v02:

Take into account only the 4 digits of the broker's quotation if barry uses 4 digits



UseBollingerBandsAverage:



CheckLastCandlesticksClosePrice + Risk LOW:

