

Settings

1. Magic number
2. Initial lot size – Start Lot size when trading (0.01)
3. Add Lot Size – True/False
4. Add lot size – Amount of lot size to be added when trading if setting 3 is true
5. Multiply Lot Size – True/ False (If Add Lot Size (3) and Multiply Lot Size (5) are both false, then EA only trade one lot size from Initial Lot Size (2))
6. Multiply Lot Size – Amount of lot size to be multiplied when trading if setting 5 is true
7. Hedge Stop order – True/False – If true, EA places stop order according to setting 8 and 9
8. Hedge stop order distance in points from buy or sell – Hedge stop order placed x amount of points from buy or sell
9. Hedge stop order from Moving averages – True/False
10. Hedge stop order distance in points – If setting 9 is true, Hedge stop order from Moving averages is placed on the other side of Moving Average x amount of points from moving average.
11. Renko Bar size – Size of Renko bar in X amount points
12. Renko Bar Counting – Number of Renko bars X amount in direction before opening buy or sell order. If set to 0, EA will open buy or sell on each Renko bar.
13. Moving Average type – Simple, Exponential, Smoothed, Linear Weighted
14. Moving average period – Setting for the Moving average period x number
15. Moving average shift – setting for Moving average shift x number
16. EA Trading Hours – True/False – If true, EA trades according to setting 17 and 18. If false EA trades all the time
17. EA trading allowed start – 01:00 – Setting for EA to start trading at given time
18. EA trading Allowed stop – 23:30 – Setting for EA to stop trading at given time
19. EA Initial trade start – 07:00 – Setting for when EA allowed to place first trade
20. EA Initial trade stop – 17:00 – Setting for when EA is not allowed to place first trade anymore until setting 19 starts again.
21. Take profit – Setting for take profit in points for each individual order. If set to 0 there is no take profit
22. Stop loss - Setting for stop loss in points for each individual order. If set to 0 there is no stop loss
23. Trailing stop – True/false
24. Trailing stop start in points – When order reaches x amount of points, Trailing stop activate
25. Trailing stop distance – Setting to put trailing stop x amount of points from current market price
26. Trailing stop step in points – Steps of trailing step in points when following current market price
27. Basket take profit – True/False
28. Basket take profit amount in \$ - When all trades reach x amount in \$ all open order are closed including stop orders and EA reset.
29. Basket take profit trail – True false
30. Basket take profit trail activate in \$ - When all trades reach x amount in \$, Basket take profit trail starts
31. Basket take profit trail lock in \$ - When Setting 30 activate. Profit lock of x amount in \$ lock. If basket profit \$ drop to basket take profit trail lock, all trades are closed including stop orders and limit orders and EA reset.

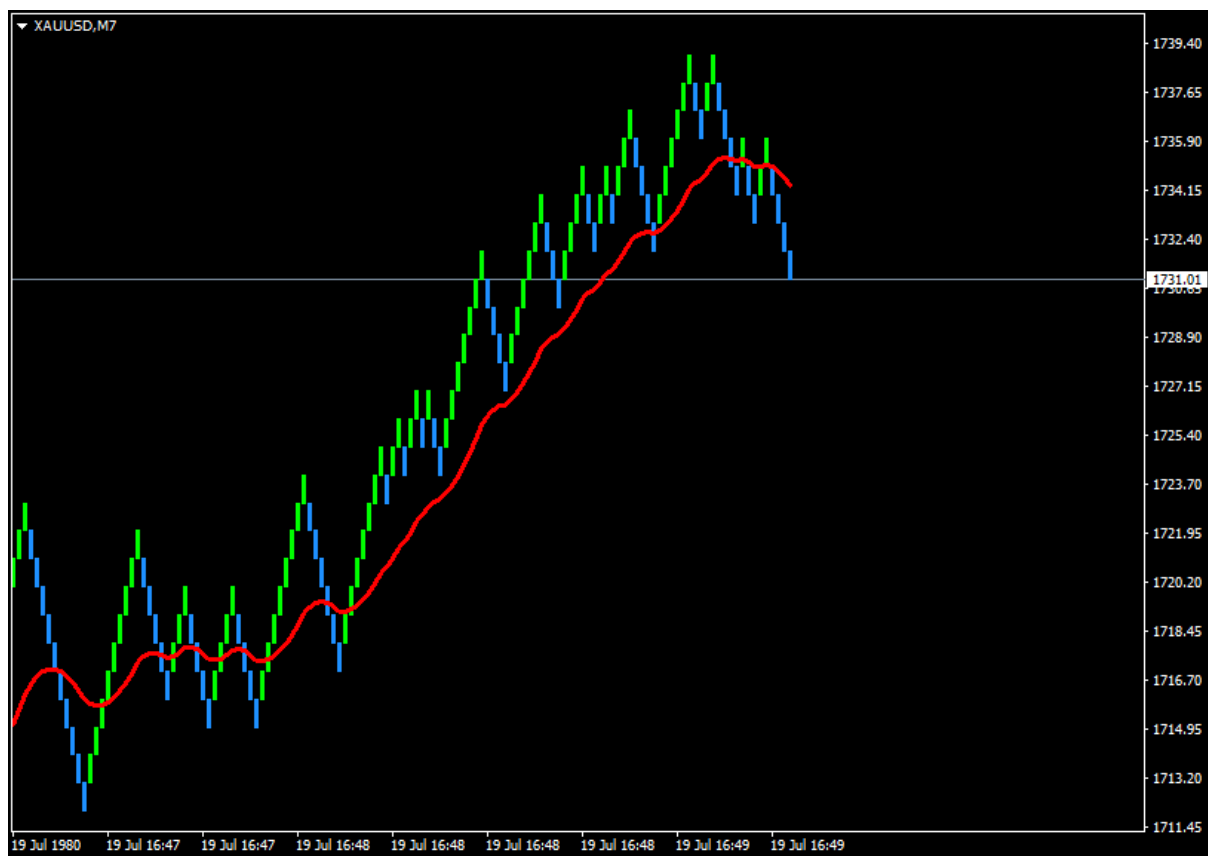
32. Basket take profit trail step – When setting 30 activate, profit trail lock moves as profit of basket increase by X amount in \$ After Basket take profit trail closes all orders, EA reset
33. Basket Stop Loss – True/False
34. Basket Stop Loss in \$ - If setting 33 is true, the basket of open orders has a stop loss in x amount of -\$. After Basket Stop Loss closes all orders, EA reset
35. Spread Limiter – True/False
36. Spread limiter in points– If spread is bigger than x amount of points, then EA will not place buy or sell until spread is below x amount points of spread limiter.

Normal Candle Stick chart



Renko Chart 100 Points per bar.

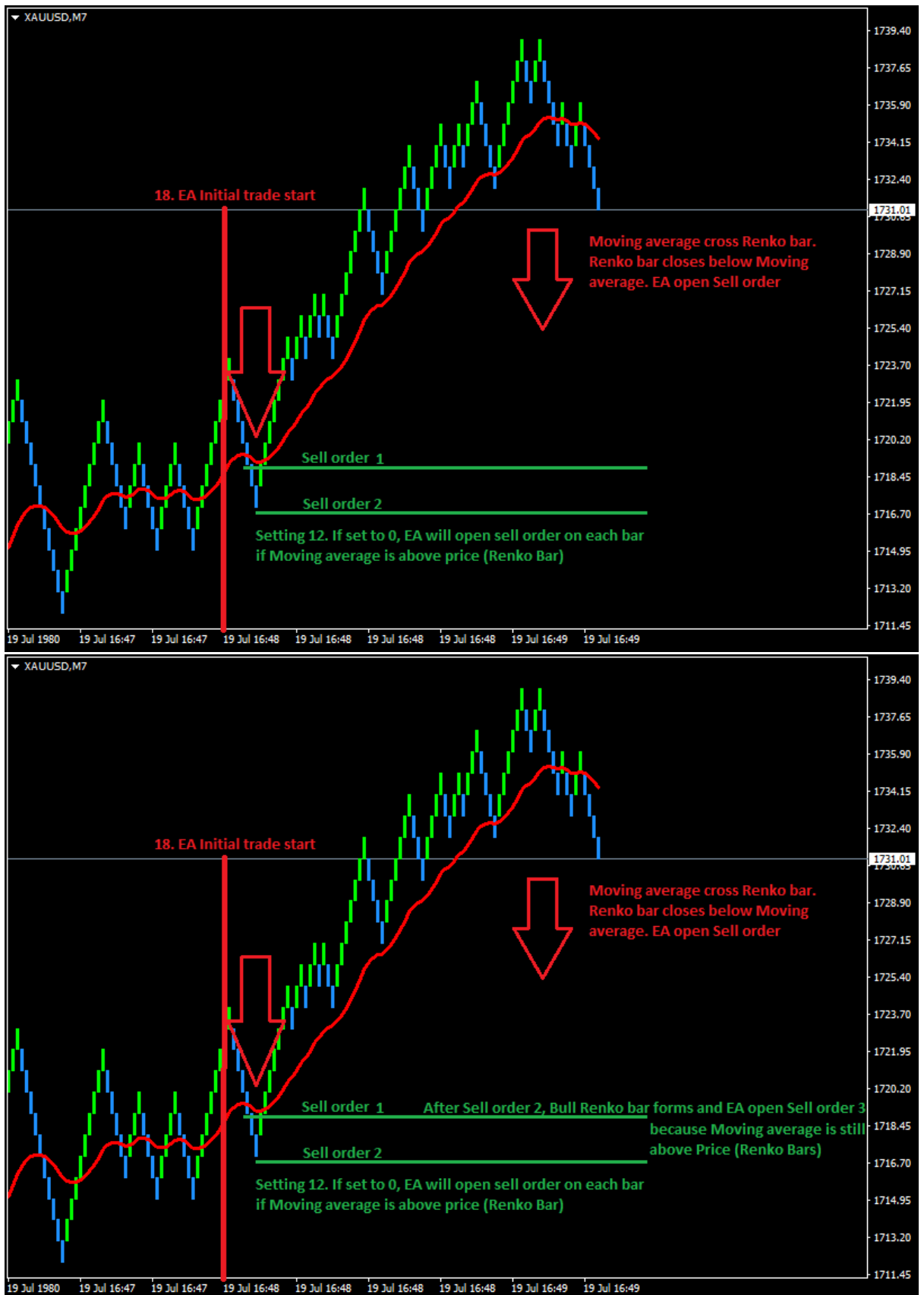
The EA must be designed to work on a Renko bar chart with a moving average.



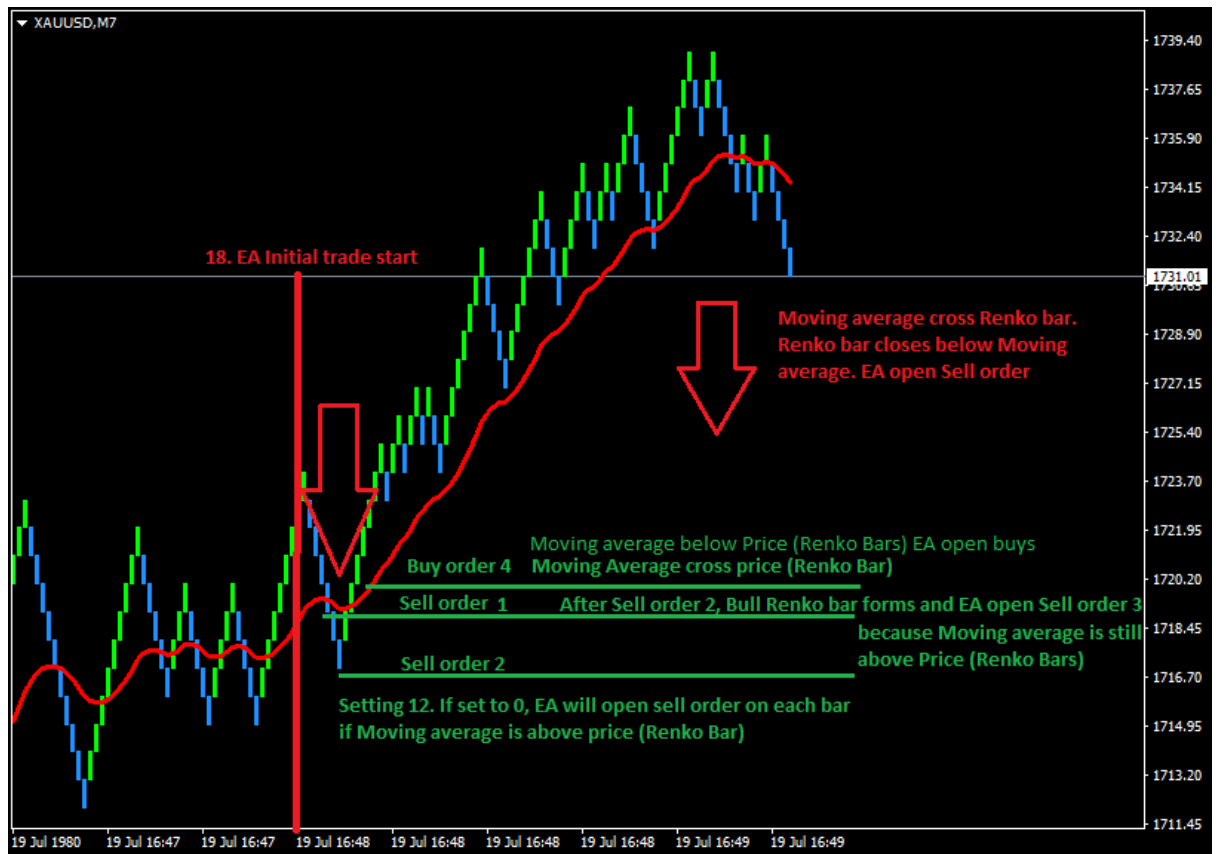
How EA start and first order entry



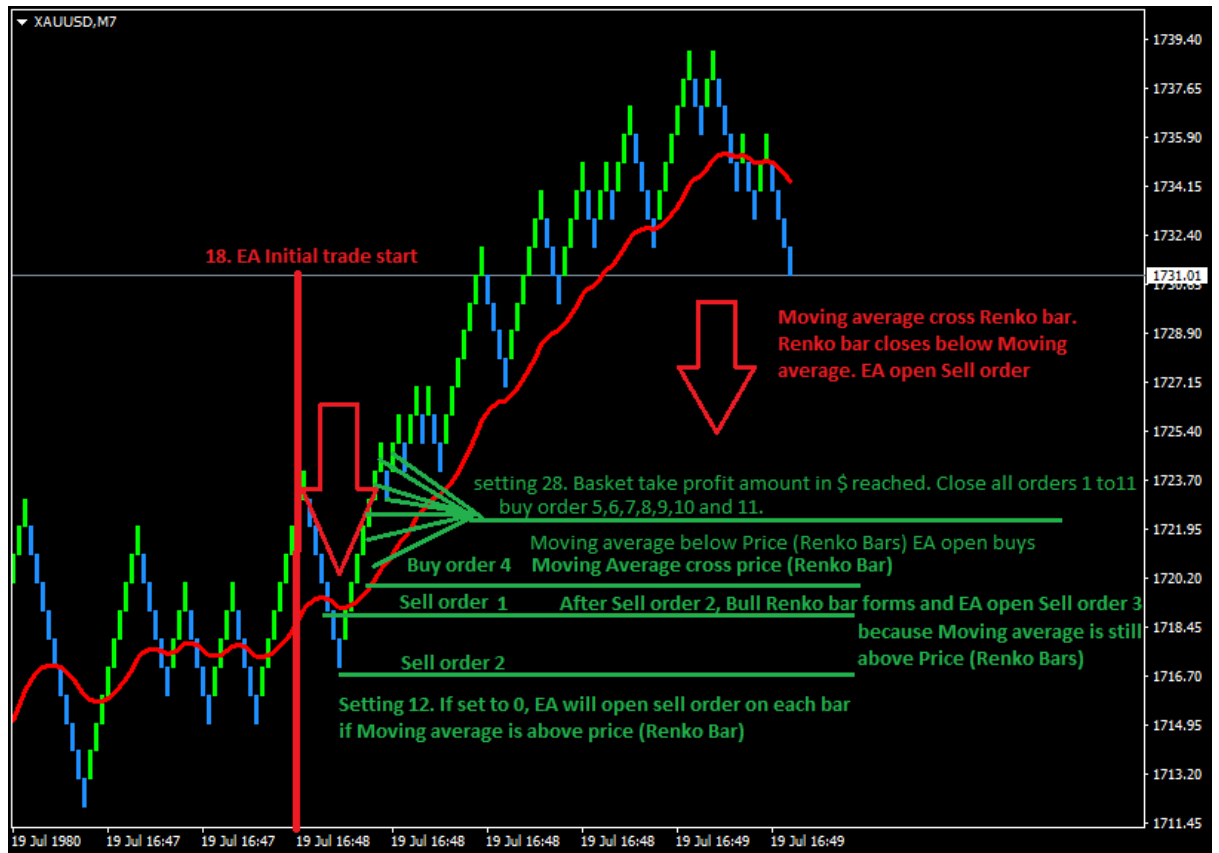
How EA trades after first order entry



When Moving Average cross price while opposite orders are open (Renko Bars)



When EA reaches Basket profit setting 28 (EA reset after closing all orders)



When EA start again after EA reset

