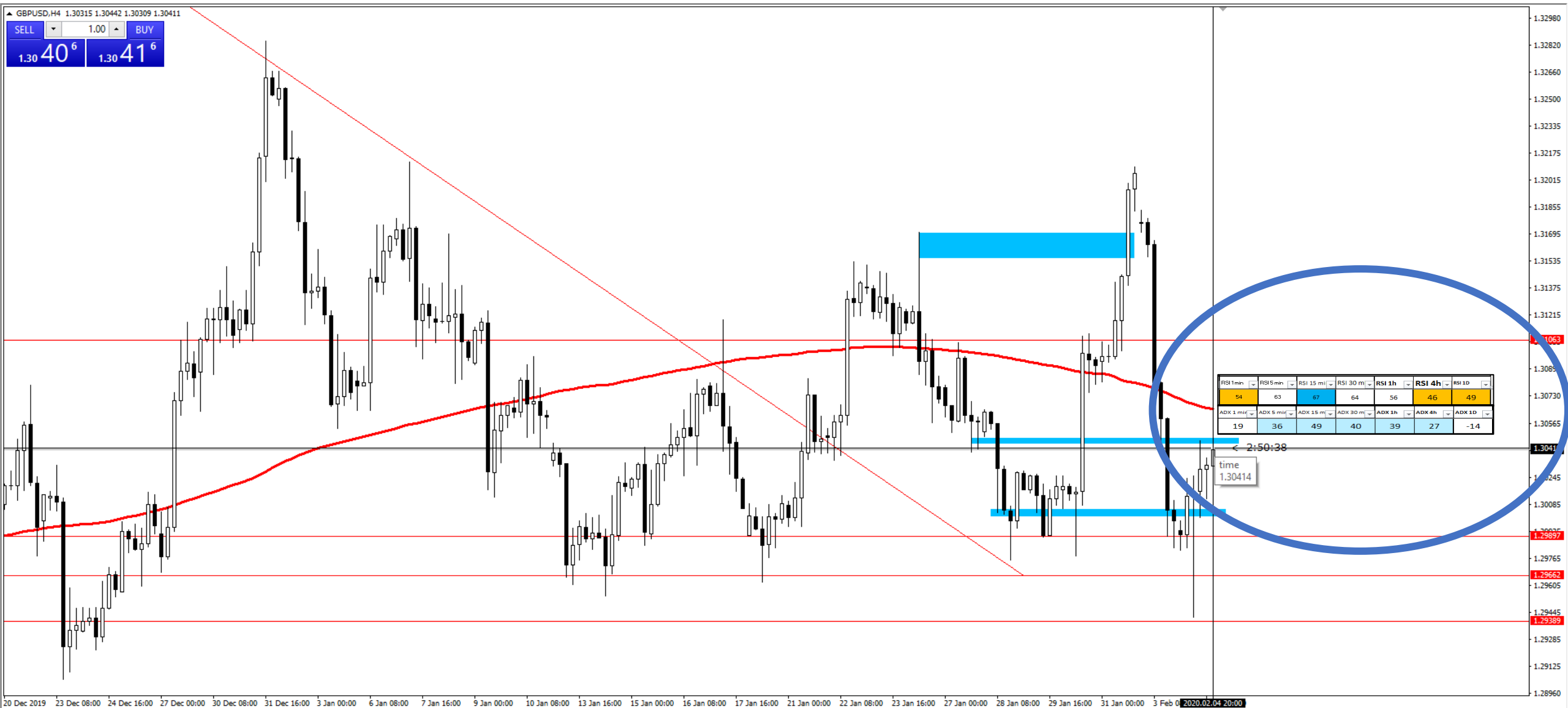


Job Description

- Job
- Description
- 1.
- The goal of the indicator is to display RSI & ADX values for all timeframes (1'/5'/15'/30'/1h/4h/1d/1w) at a concrete time directly on the chart inside a Table as shown in attached pdf file
- 2.
- Colors display on ADX and RSI Value should be configurable in function of the range where the RSI/ADX value is for example ▢ if $22 > RSI > 0$ then color red in the box etc
- 3.
- A total of 4 ranges / colors should be disponible in the configuration panel
- 4.
- RSI and ADX values should be configurable in the configuration panel (RSI time period =14 for example)
- 5. ADX value will be shown as negative value if $DMI+ < DMI-$ (multiply the value by X-1 if $DMI+ < DMI-$)
- 5.
- The time display by the cross Will be the "value time" of each RSI/ADX value
- 6.
- Easy way to show hide the table with all value (type On /Off mode)

"RSI ADX all time frame Just in Time indicator"



Zoom on the indicator

