

# Input parameters

With (x) means editable parameters to be set by the user

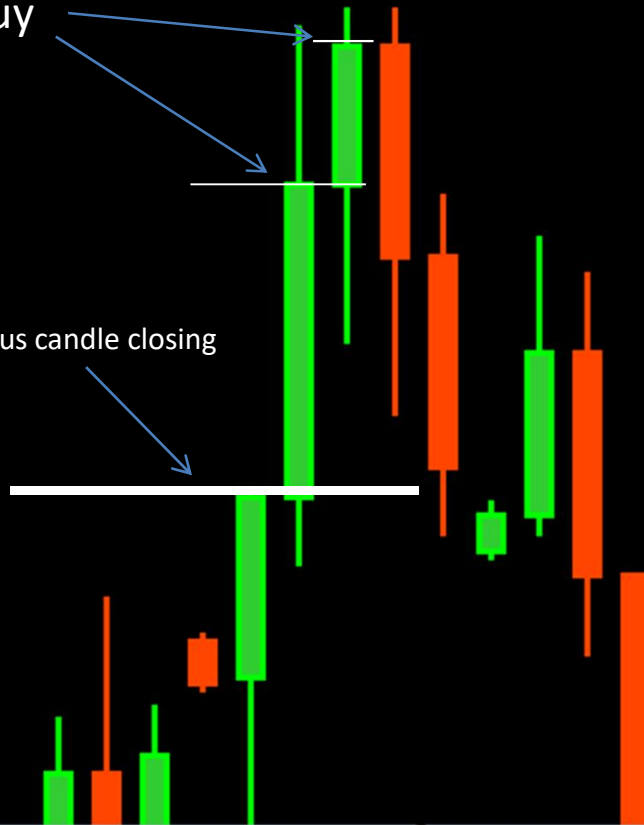
- 1) Open buy if price is higher than previous candle closing (true / false)
- 2) Open sell if the price is lower than the previous candle closing (true / false)
- 3) Open next buy only if the price is greater than the previous buy (true/false)
- 4) Open next sell only if the price is down than the previous sell (true/false)
- 5) Open buy only when current candle closes over the maximum of previous candle (true /false)
- 6) Open Sell only When Current Candle Closes down Over The Minimum Of The Previous Candle (True / False)
- 7) Open buy when the price is above average mobile SMA (x) periods
- 8) Open sell when the price is below average mobile SMA (x) periods
- 9) Fix Lot Size (X)
- 10) Set TP of all orders over (x) pips breakeven line
- 11) Working hours EA
- 12) Maximum number of orders (x)
- 13) Close all if the drawdown exceeds the (x)%
- 14) FIFO Ordering Method (First In First Out)

## Input parameters 1

Open buy if price is higher than previous candle closing (true / false)

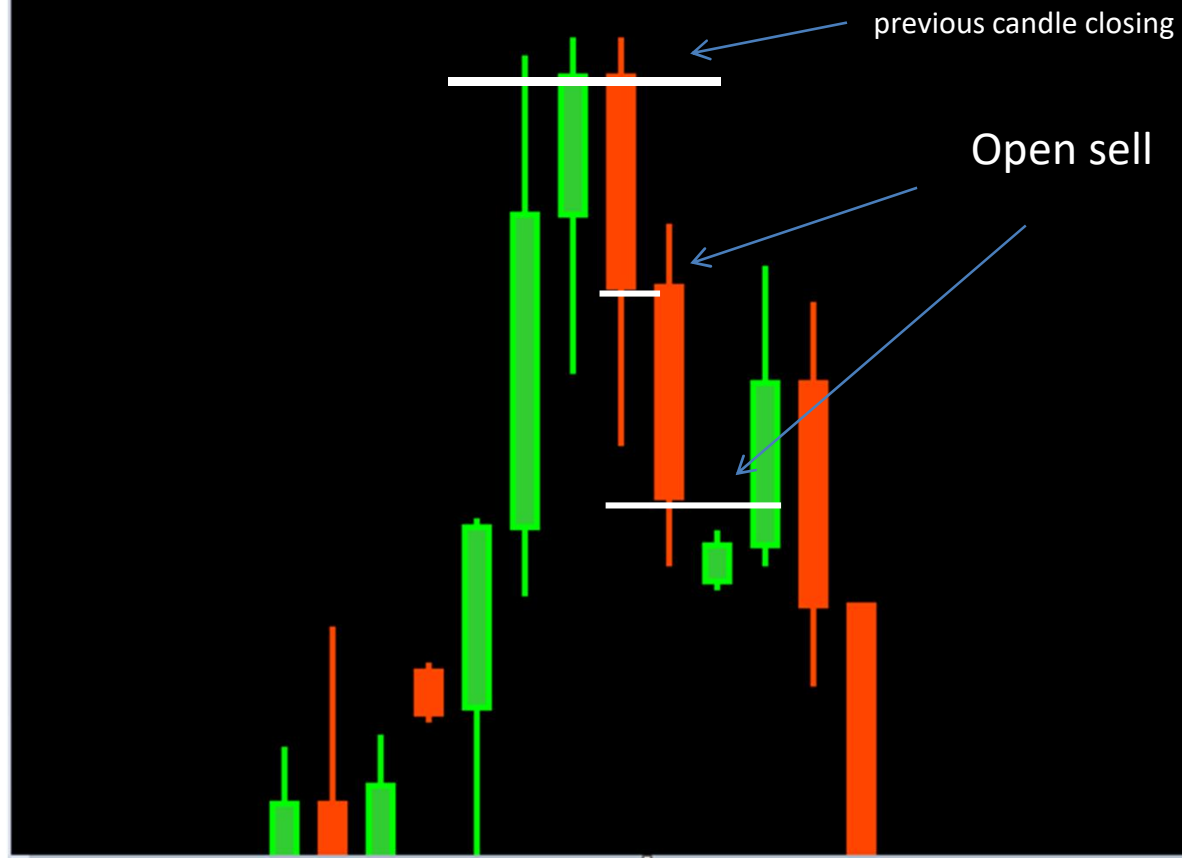
Open buy

previous candle closing



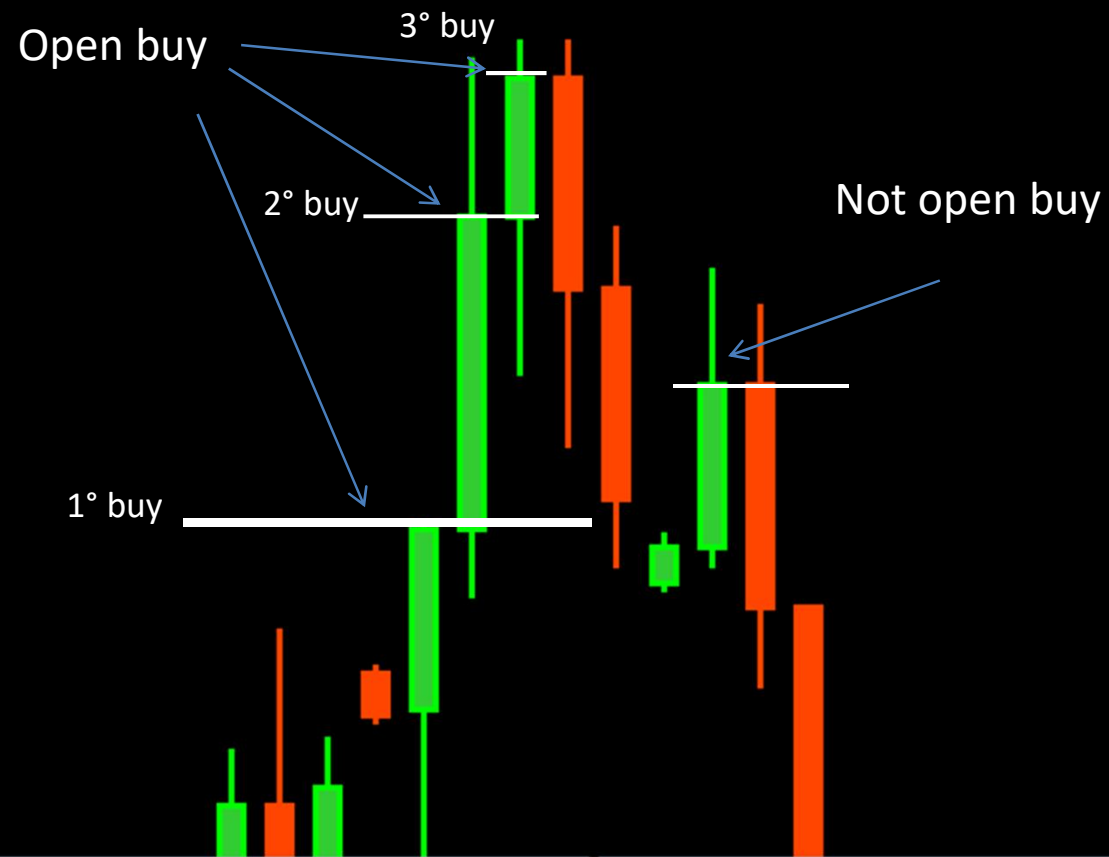
## Input parameters 2

Open sell if the price is lower than the previous candle closing (true / false)



### Input parameters 3

Open next buy only if the price is greater than the previous buy (true/false)



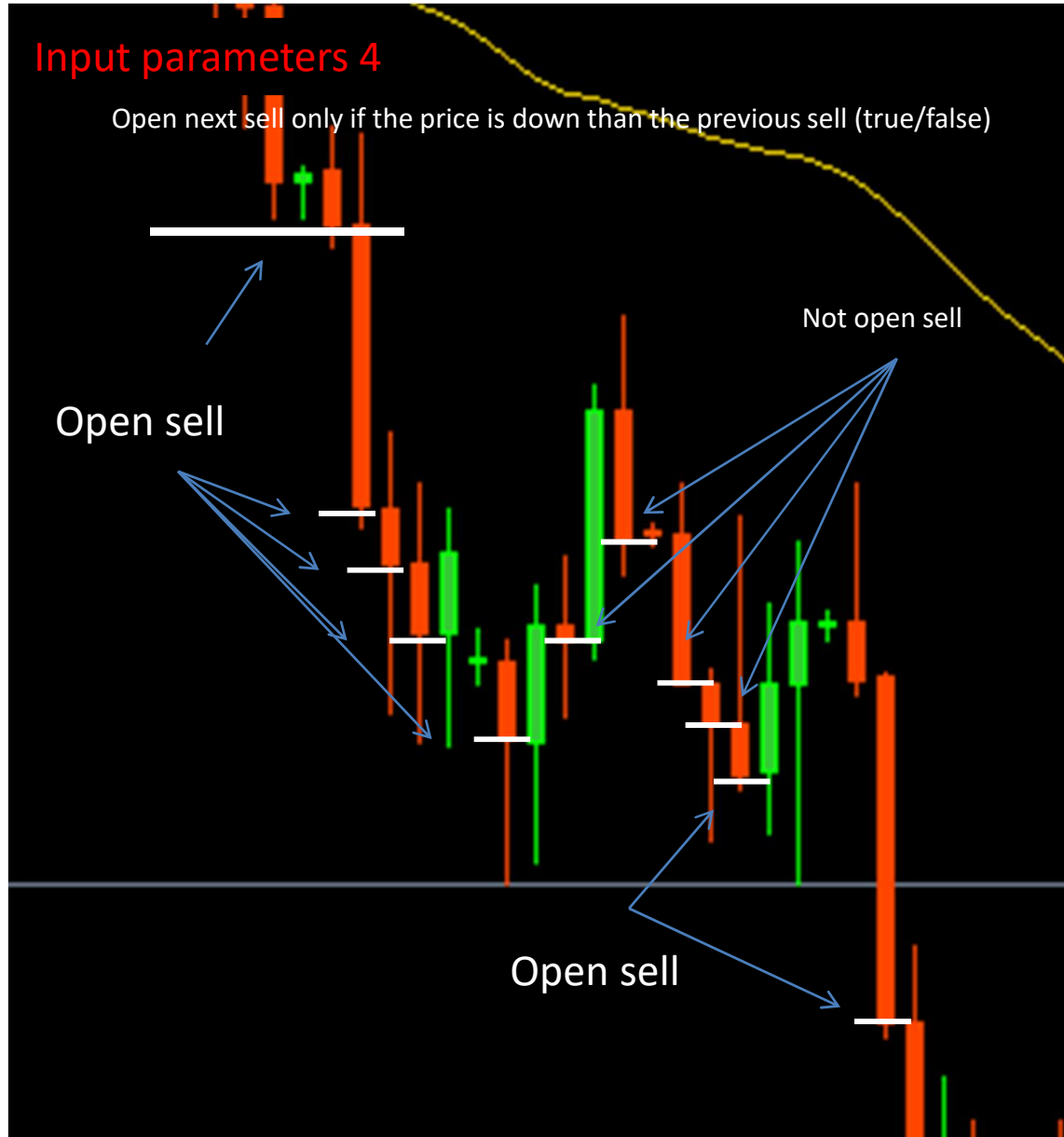
## Input parameters 4

Open next sell only if the price is down than the previous sell (true/false)

Open sell

Not open sell

Open sell



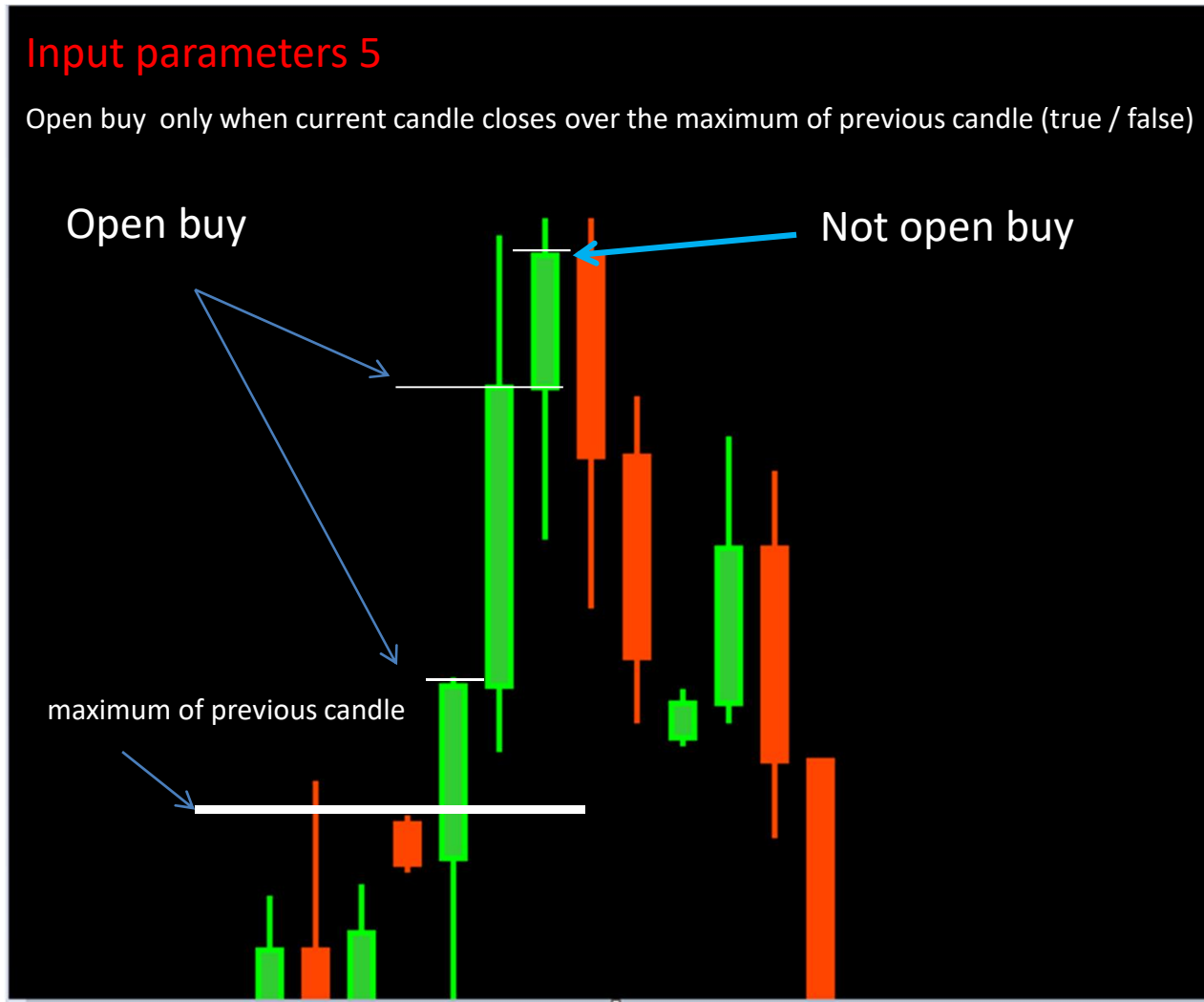
## Input parameters 5

Open buy only when current candle closes over the maximum of previous candle (true / false)

Open buy

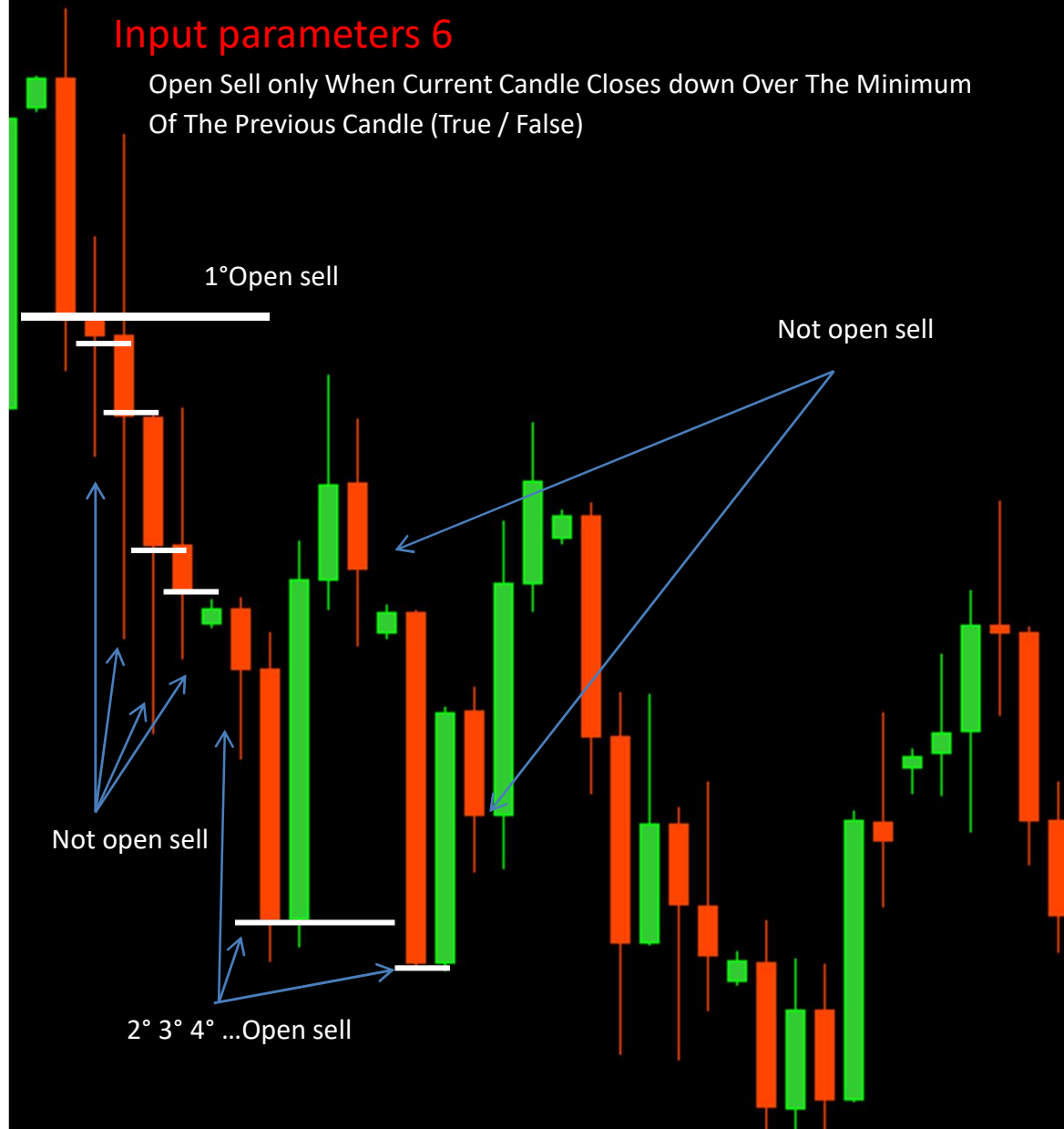
Not open buy

maximum of previous candle



## Input parameters 6

Open Sell only When Current Candle Closes down Over The Minimum  
Of The Previous Candle (True / False)



## Input parameters 7 / 8

Open buy when the price is above average mobile SMA (x) periods

Open sell when the price is below average mobile SMA (x) periods

Open buy when the price is above average mobile SMA

Not open sell

Open sell when the price is below average mobile SMA

Not open buy

