

CUSTOMIZED EA DEVELOPMENT BASED ON PARABOLIC SAR AND MOVING AVERAGE INDICATOR.

Session Settings: Enable or disable trading for the Sydney, Tokyo, London & New York sessions.

Trading Days: Enable or disable trading on Friday

Long / short: Enable or disable Buy, Enable or disable Sell

Broker: Works for ECN/Non-ECN & All types of brokers

Price Digit: Works for 2-3-4-5 digit symbols

Trading pair: works on all forex, commodities, metal, stock & all

Timeframe: works on all timeframe

Stop Loss = No SL and Manual Value for SL

Take Profit = No TP and Manual Value for TP

News: is it possible to enable or disable new trade order on high impact news? If not possible then leave it.

Compatible software: EA for MT5 with full source code. Need ea source code in separate zip file and Ea for mt5 in separate zip file.

EA Name: ANILGIRI, Copy Right iwrahost.com .

Indicator setting:-

01. Parabolic SAR: Step: 0.02, Maximum: 0.2

02. Moving Average: Period: 101, Shift: 0, Method: simple, Apply to: Close

[EA Requirements should be as given below.](#)

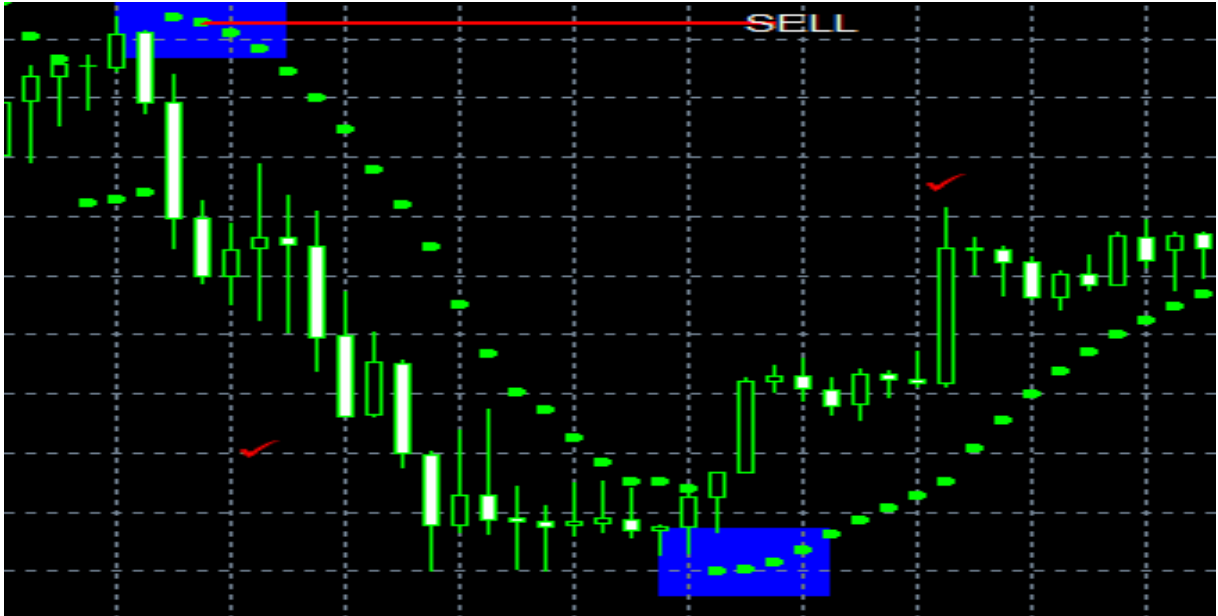
BELOW IM GIVING EXAMPLE OF SELL POSITION ONLY,

ACCORDINGLY IT APPLIES TO BUY POSITION ALSO THAT I HAVE

NOT MENTIONED HERE.

SELL: Signal

01. Open SELL order when second dot of Parabolic SAR start on the TOP of candle/chart.

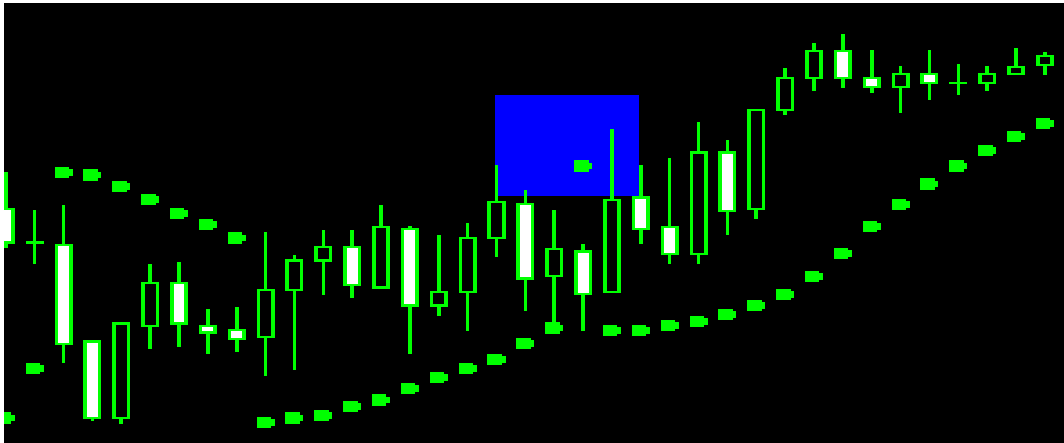


02. If there is buy position active then EA open sell position at second dot of parabolic sar sell signal.



SELL: Signal (REFUSE BY EA)

01. EA refuse to place sell order. if parabolic sar give sell signal with single dot and do not start second dot.

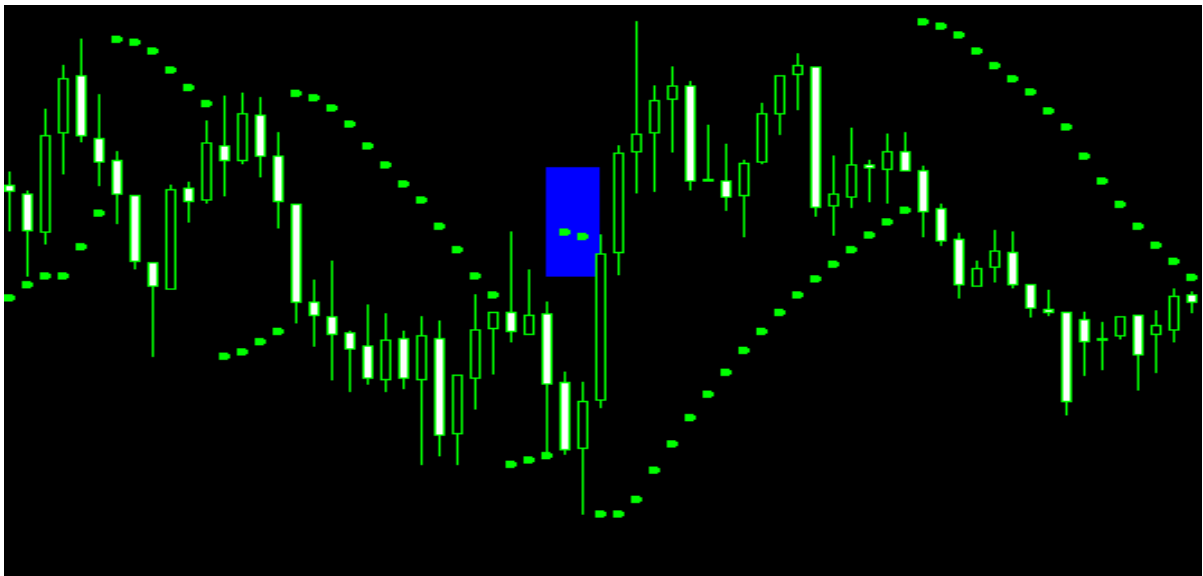
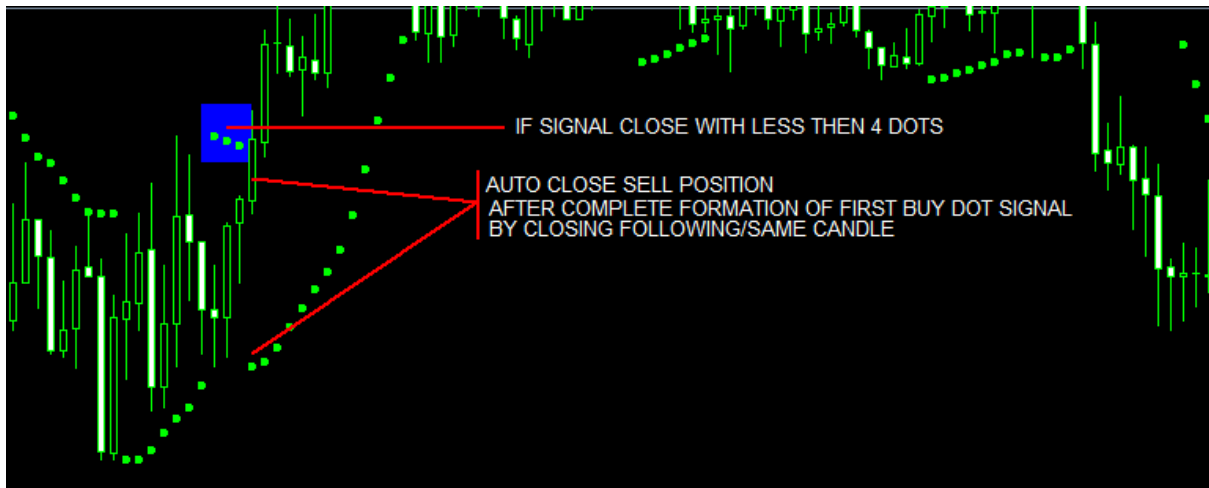


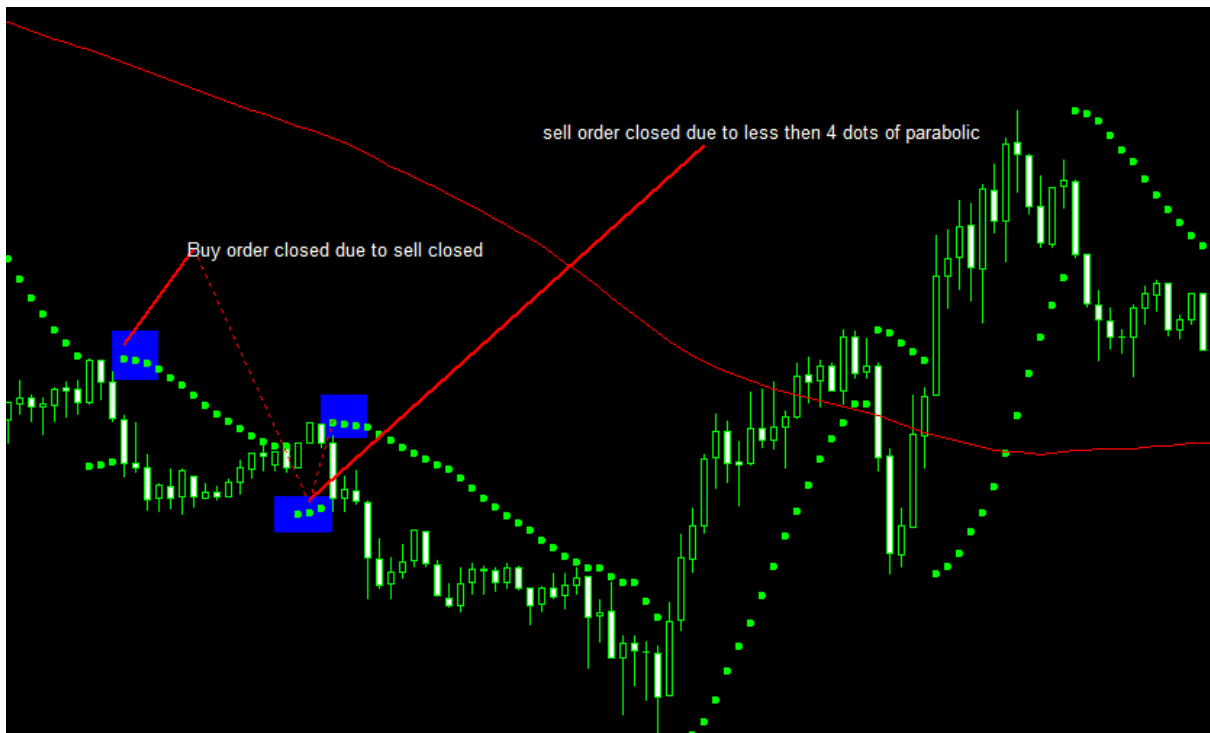
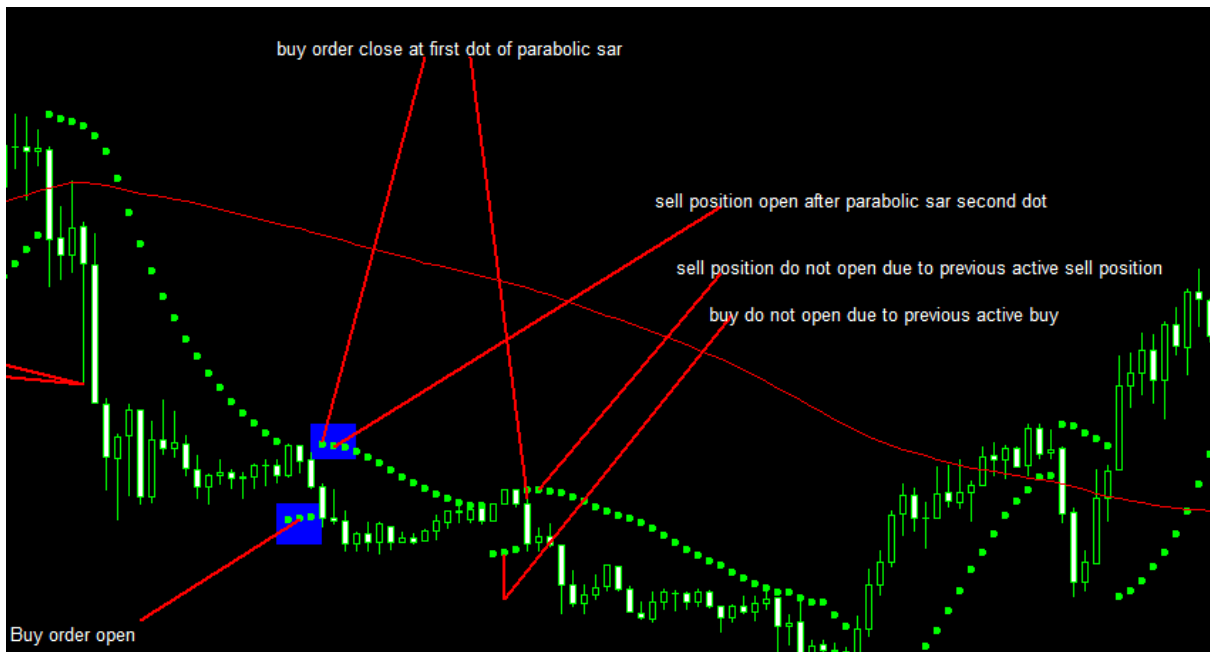
02. EA refuse to place sell order according to parabolic sar given sell signal if there is already active sell position.



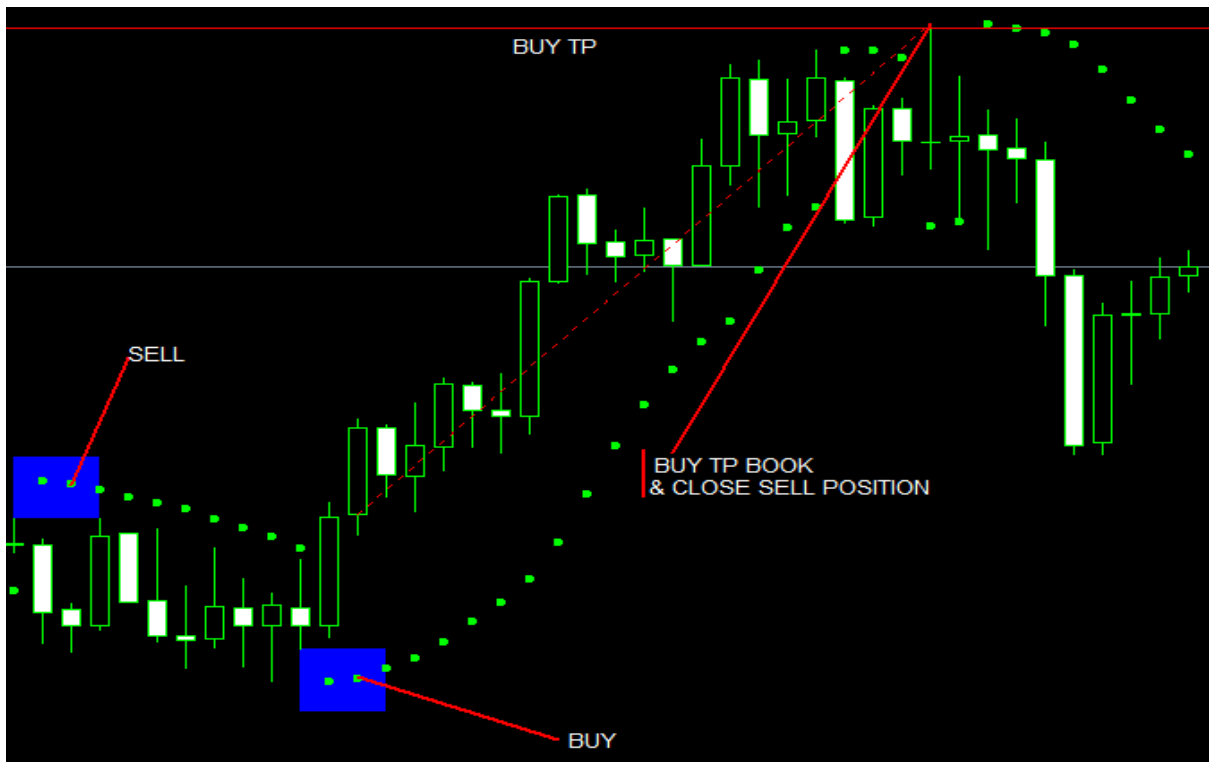
SELL: Signal (AUTO CLOSE BY EA)

01. If Parabolic SAR sell signal complete with less then 4 dots & PSAR start buy signal. At this condition EA close sell position. But candle must complete/close at Parabolic SAR first buy dot.





02. Auto close active sell position, if buy position book TP or close buy Position manually.



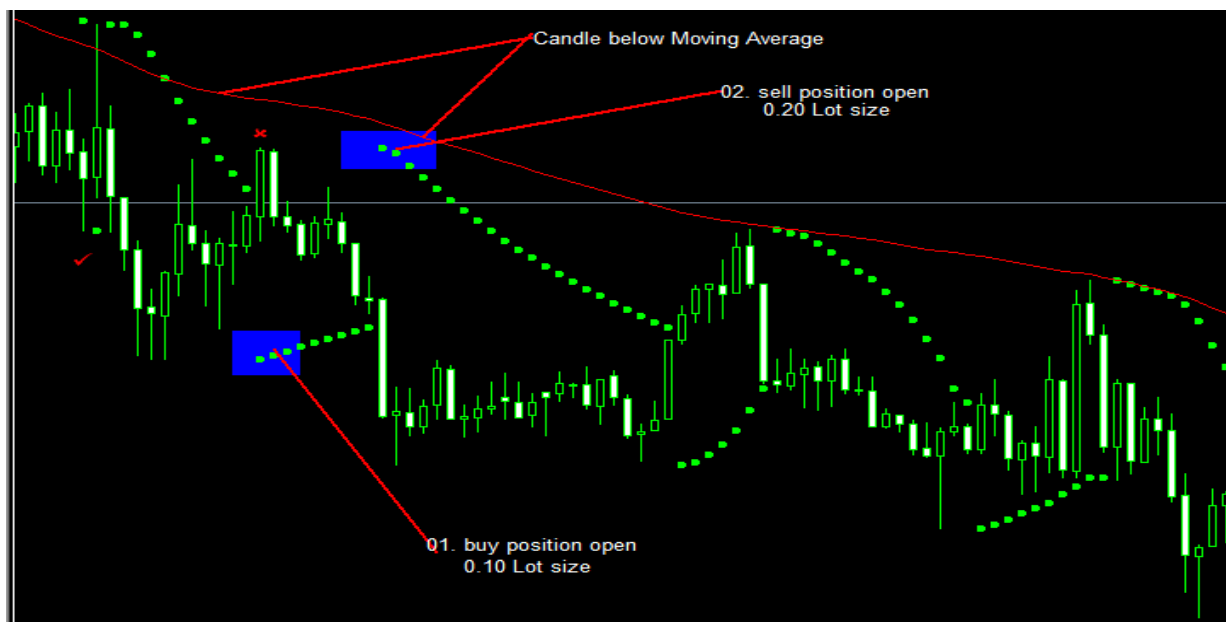
LOT SIZE AUTO SET BY EA:

01. EA default Lot Size: 0.01, & ability to place manual Value for Lot Size in EA setting
02. EA open double lot size of sell position then active buy position lot size at second dot of parabolic sar sell signal. But double lot size order only if there is following criteria meet. **If criteria do not meet EA do not open double lot size and continue as previous lot size.**



Double lot criteria:- Price candle must be below the moving average line and parabolic sar give sell signal with second dot. And active order of buy position.

[Moving Average Setting: Period = 100, shift= 0, MA Method = simple, Apply to = close]





--- Thank You! ---