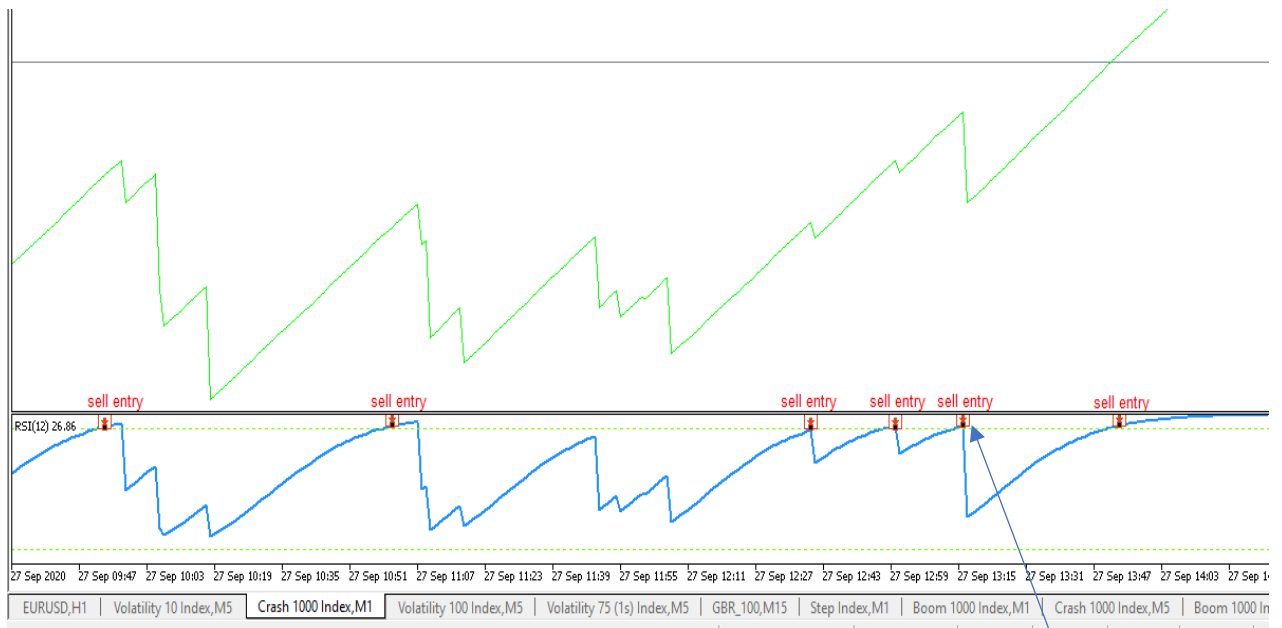
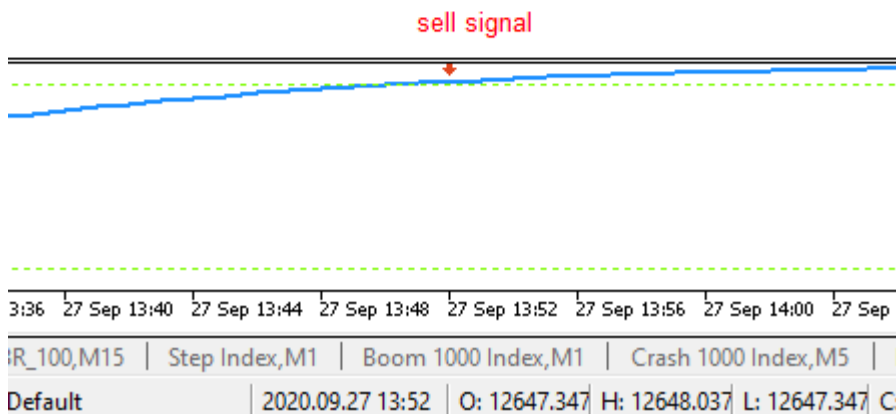
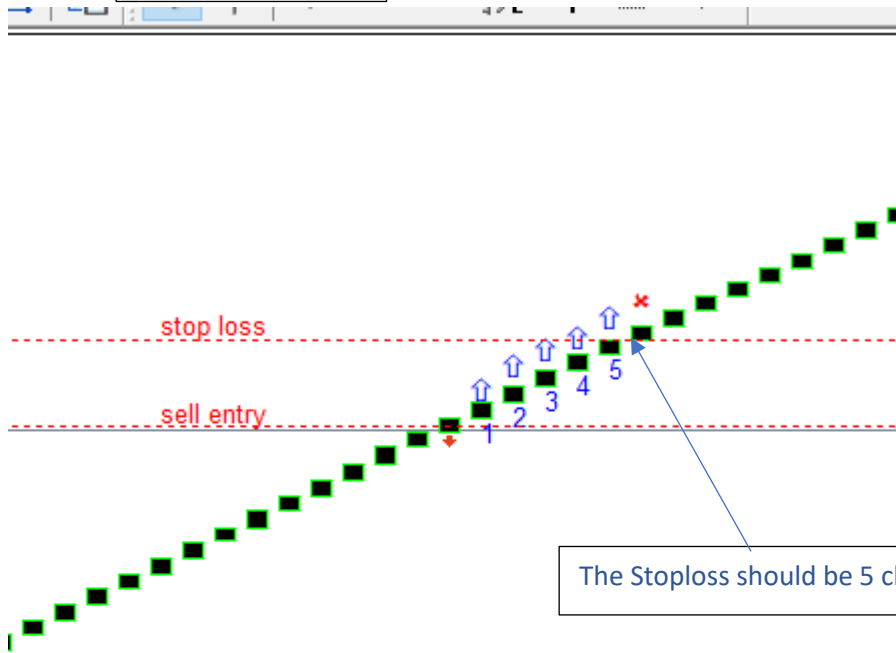


## Sell Signal



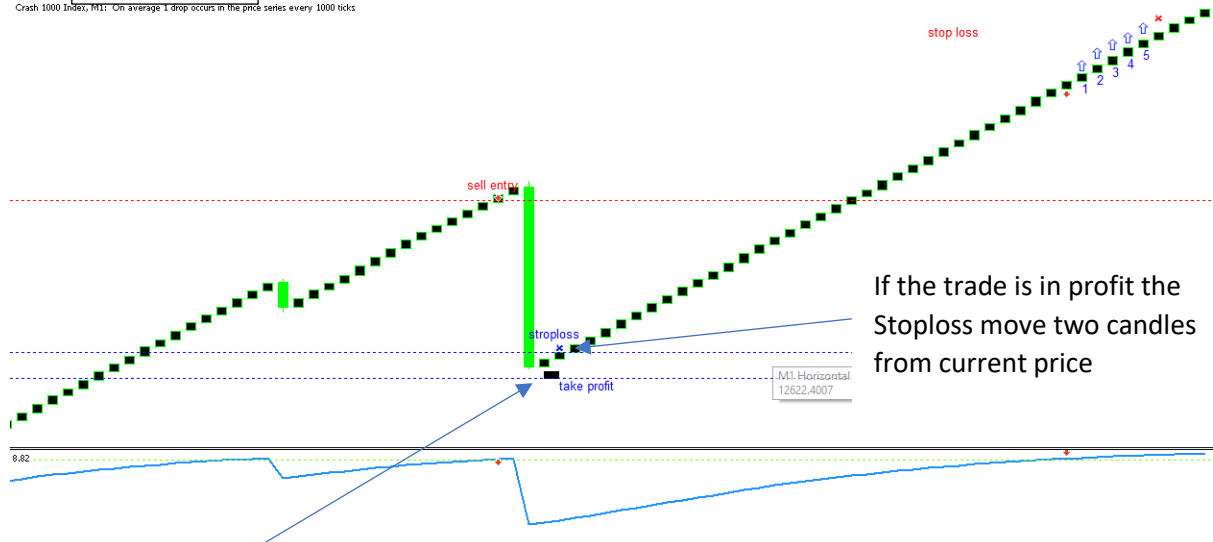
The sell signal (sell entry) is we the RSI line cross the 90 level line

# STOPLOSS



## TAKEPROFIT

Crash 1000 Index, M1: On average 1 drop occurs in the price series every 1000 ticks



If the trade is in profit the  
Stoploss move two candles  
from current price

The TakeProfit will be activated  
only when the trade is profit 1  
candles away from the current