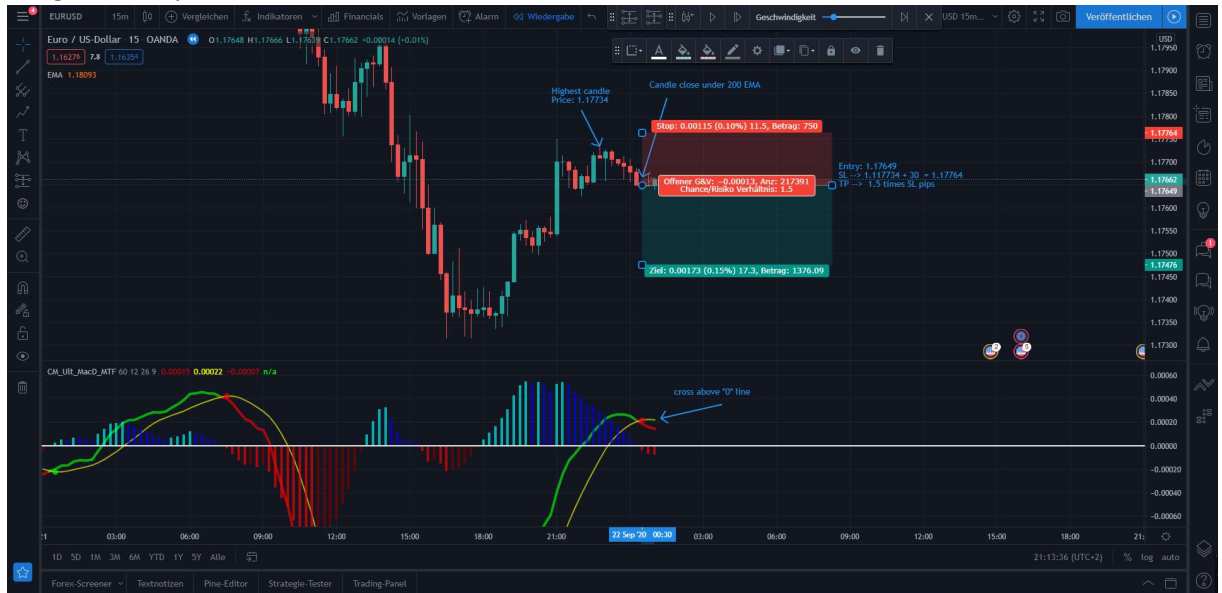


I need an mt4 EA to trade a simple strategy based on MACD and 200 EMA.

1. EA should work on every symbol and timeframe
2. Only one open trade (long or short) at a time
3. 200 EMA on the Chart
4. MACD in separate window

Strategy:

Long → close price > 200 EMA and MACD cross below “0” line



SL: Lowest price from the last 10 candles - 30 pips

TP: 1.5 times SL pips

Short → close price < 200 EMA and MACD cross above “0” line



SL: Highest price from the last 10 candles + 30 pips

TP: 1.5 times SL pips

Customisable Inputs:

- MACD parameters (Fast Length, Slow Length, Signal Length)
- EMA Parameter (50, 150 or 200)
- SL (pip difference between lowest/highest price of the 10 last candles), (number of last candles for the lowest/ highest price), (Max. los/ trade in account currency (for example EUR/USD → max. los 100€, USD/CHF → max. los 100€ ...))
- TP (risk reward ratio)

Description:

EA identify the trade condition for long or short.

- Long → close price > 200 EMA and MACD cross below "0" line
- Short → close price < 200 EMA and MACD cross above "0" line

When the condition is true, EA calculate SL and TP

- Long → SL: Lowest price from the last 10 candles - 30 pips
- Short → SL: Highest price from the last 10 candles + 30 pips
- TP: 1.5 times SL pips

EA calculate lot size according to max. customisable input (e.g. 100€)

EA place long or short order.

No other order can be placed until the last order is closed (Price meet SL or TP)