

Logic:

- BB Bands
- MA Cross
- 100 Pips Momentum

1. BB Bands

Trade when candle close above/below BB band. Trade ONLY on next candle.

BB Settings: period, deviation (default: period = 20, deviation = 1.5)



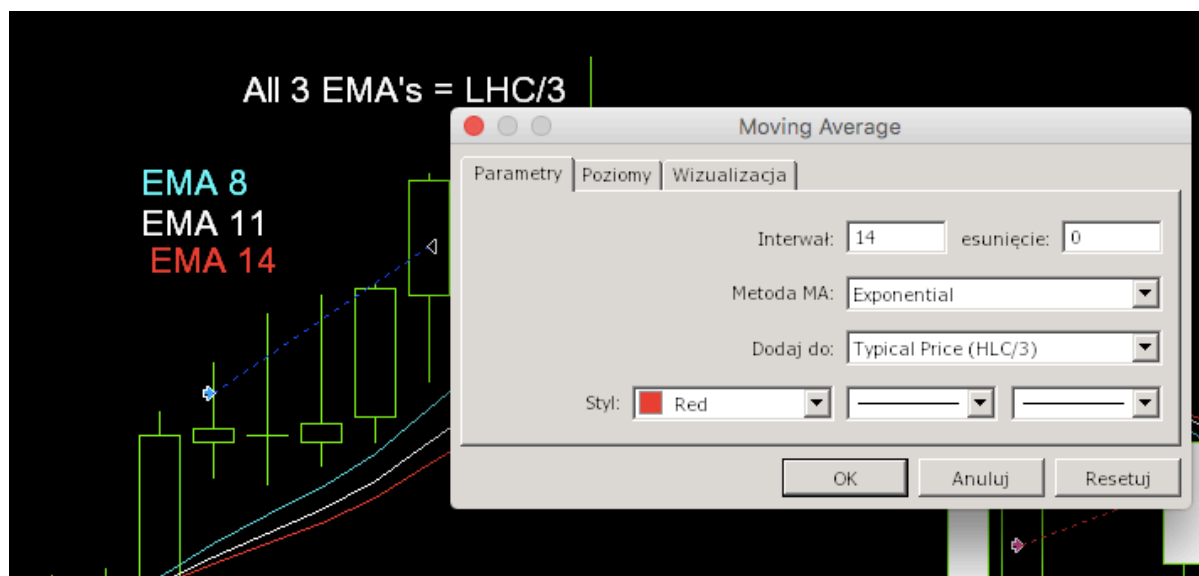
2. MA Cross

Trade LONG: EMA8 cross up EMA 14 and EMA 11 + EMA 11 cross up EMA14, trade on next candle

Trade SHORT: EMA8 cross down EMA 14 and EMA 11 = EMA11 cross down EMA14, trade on next candle

EMA's settings: period (default: 8,11,14)

Ex. of long



Moving Average

Parametry | Poziomy | Wizualizacja

Interwał: 14 esunięcie: 0

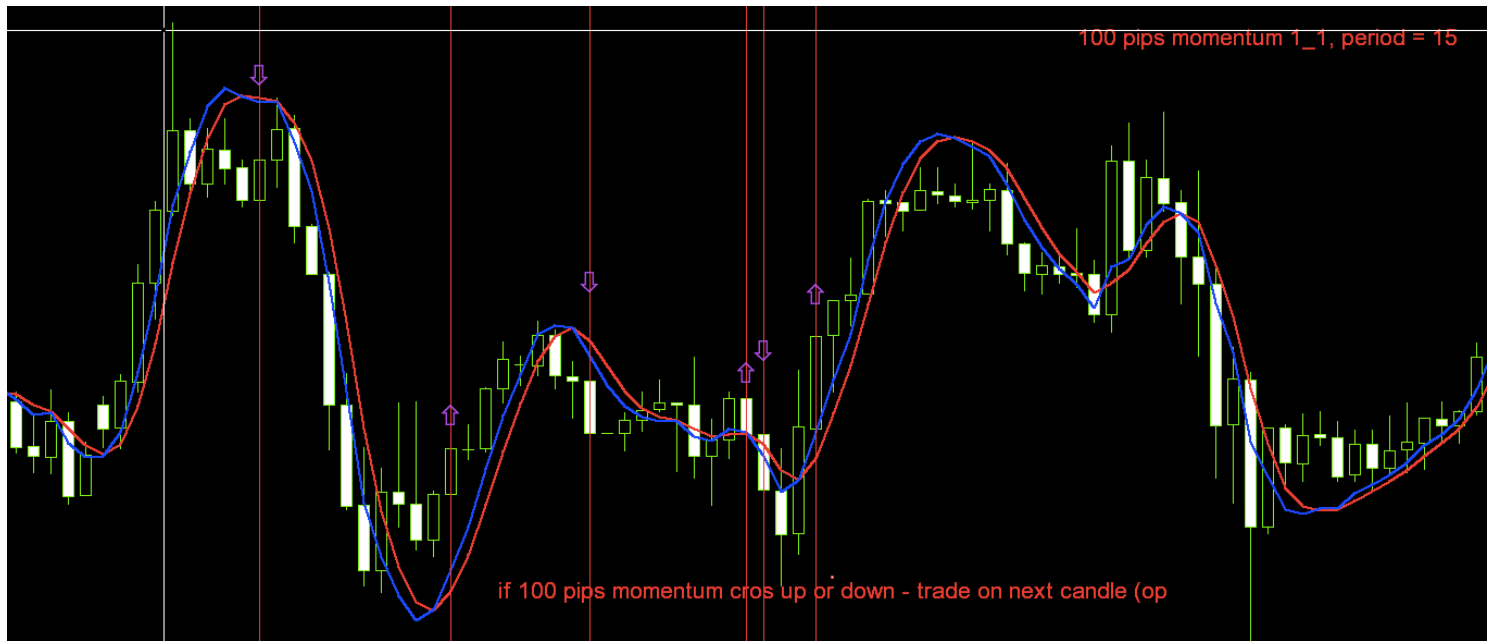
Metoda MA: Exponential

Dodaj do: Typical Price (HLC/3)

Styl: Red

OK Anuluj Resetuj

3. 100 pips momentum



Trade long: blue line cross red line down, trade on next candle

Trade short: blue line cross red line up, trade on next candle

100 pips momentum settings: period (default – period = 15)

On board EA information (please do it on background)

EA name – „STROM Martinagle EA v 1.xx”

Direction: L or S or L&S (from inputs)

Logic: BB or MACross or 100pips or Vdub(from inputs)

MinGrid: take from settings

TP in money: - take TP in money from settings

Current profit (or loss):

Magic number:

Inputs:

Order Comment:

TP in money:

SL in money: if 0 = NO SL

Magic number: 1-100

Logic: BB, EMA, 100 pips

Initial lots: from 0.01

MinGrid: points

Martingale logic: „pips” or „next cadle” (for ex. If chose „next candle” and min grid =300 - don’t trade next order with 300 points only wait for candle close, if candle close for ex. 400 points or 350 – trade, if close < 300 don’t trade / if chose „pips” don’t wait for next candle only trade during the candle if distance = „Min grid” in this case 300 points.

Grid Multi: 1-2, default = 1

Mart Multi: 1-3, default =1.486

Max Martingale Steps: 1-10, default = 8

Start Hour 1, default = 4

Start Min 1 = 0

Stop Hour 1 = 21

Stop Min 1 = 30

Start Hour 2 = 0

Start Min 2 = 0

Stop Hour 2 = 0

Stop Min 2 = 0

(after trading hours don't trade - except: next martingale orders (from 2-8) and close all trades when hit TP in money)

Allow buy: true/false

Allow sell: true/false

BB settings:

- period, default = 20
- deviation, default = 1.5

EMA's settings:

First EMA period, default = 8

Second EMA period, default = 11

Third EMA period, default = 14

100 pips settings: default = 15

If you want to add something, what is important or something that EA become better, please do it.

Email me: grzegorz.kulawik@gmail.com

Cheers!