



# TREND PRO SCANNER MT4 INSTALLATION MANUAL

---

**“EXAMPLE IMAGES”** are based on PipFinite Trend Pro Scanner

The steps below also apply to all our free indicators

## CHECKLIST

For the Scanner to load, you need the following:

1. Trend Pro purchased in MQL5.com
2. Trend Pro is installed on your MT4 platform
3. Trend Pro is functional. You still have remaining activations left.
4. Trend Pro is installed on the **“Indicators\Market”** folder. This is the default directory when the indicator is downloaded in MQL5. DON'T move the indicator on other directories
5. DON'T rename the indicator. The default name is **“PipFinite Trend Pro”**
6. Live Internet Connection. Restart your MT4 if not connected to the internet.

## BEFORE INSTALLATION

1. Extract the **“PipFiniteTrendProScanner.zip”**
2. After extraction, there will be 2 folders

**Easy Installation** - Easy method of installing the indicator

- If you don't want to use the installer, you can use the **“Manual Installation”** method

**Manual Installation** - Manually placing the files on the correct directory.

- Use if easy installation did not work on your computer.
- Use if you don't want to use the installer.

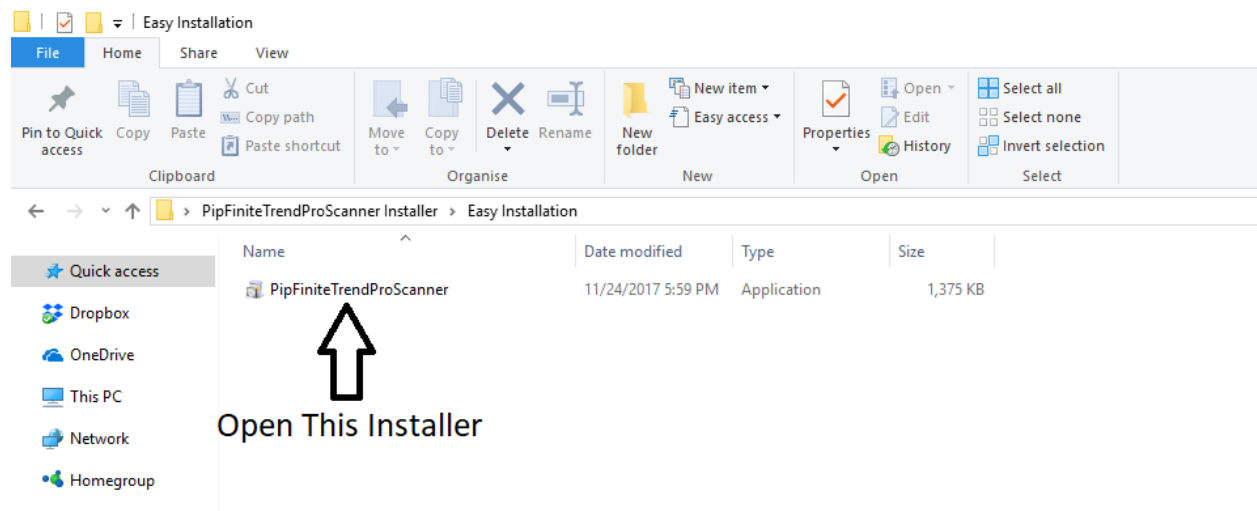
# EASY INSTALLATION

NOTE: All files needed are found inside “Easy Installation” Folder

1. Close ALL MT4 Platforms

2. Open “**PipFiniteTrendProScanner.exe**” then proceed until installation is complete.

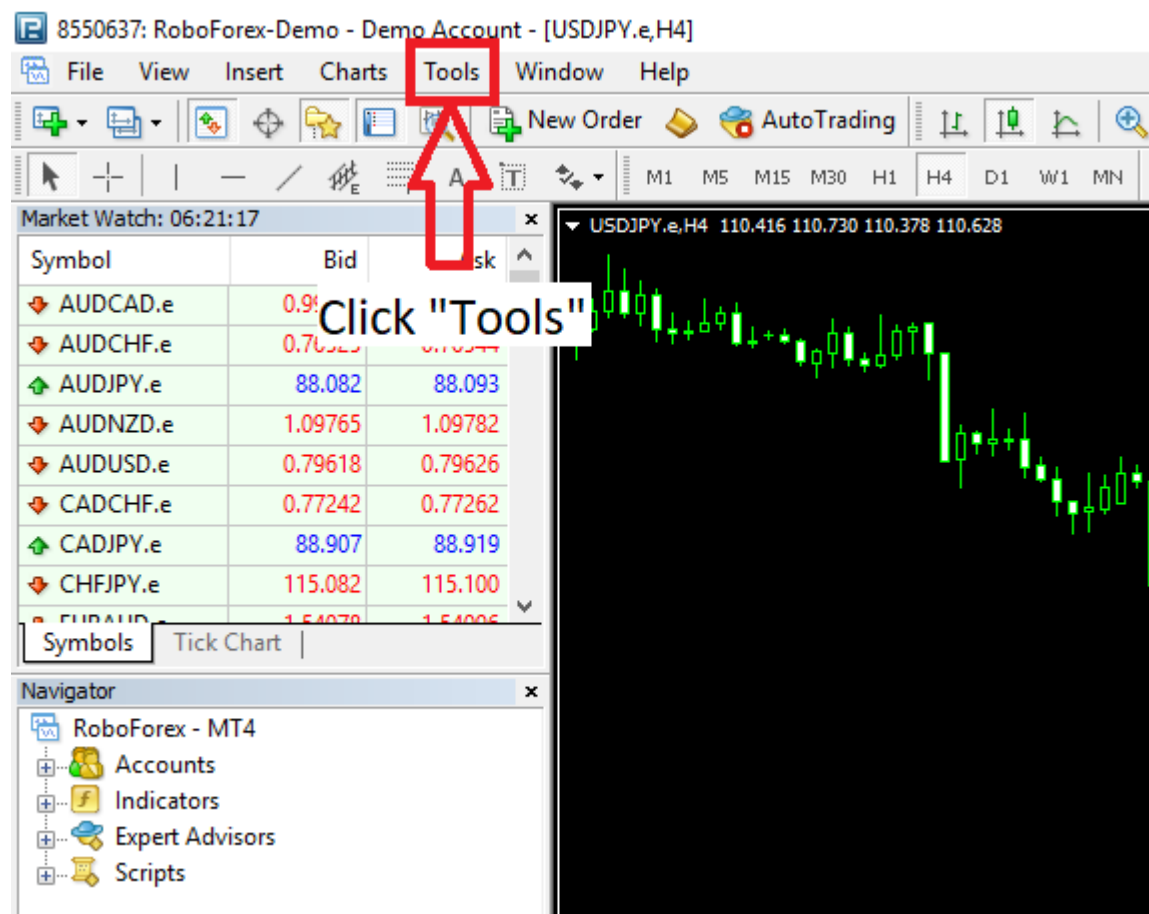
- EXAMPLE IMAGE: <https://imgur.com/pQKBO5D>



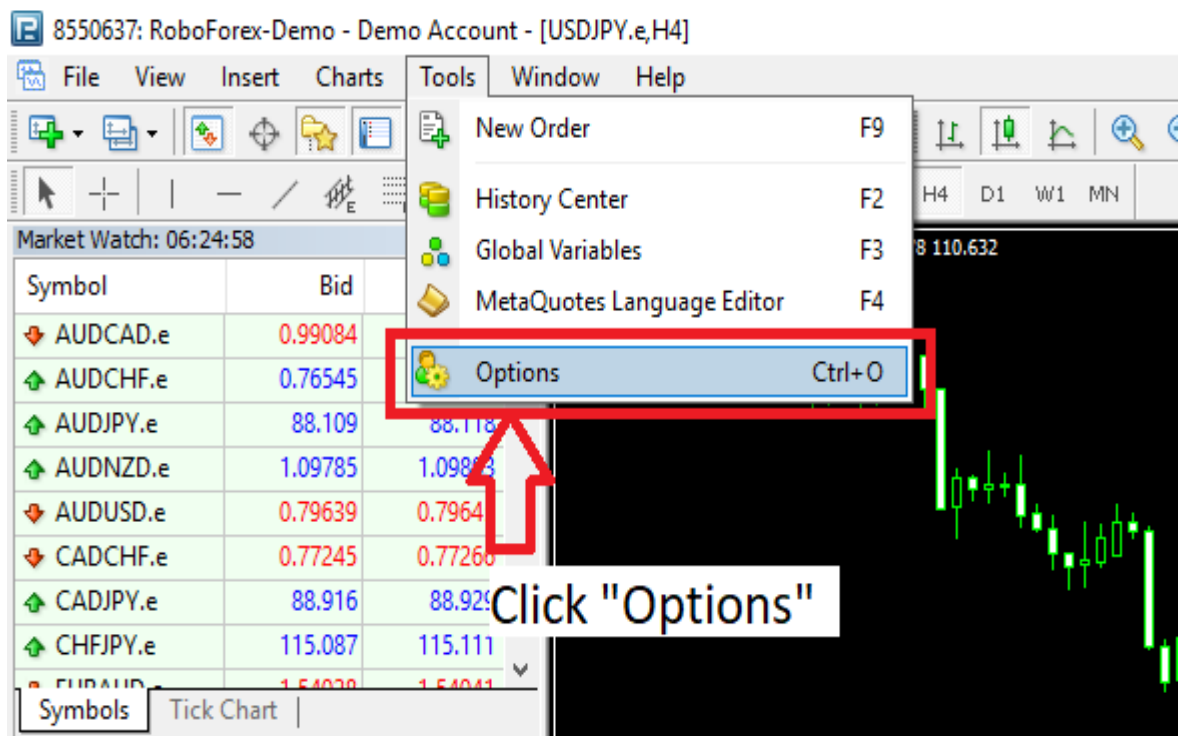
3. Open MT4

4. Allow DLL Imports

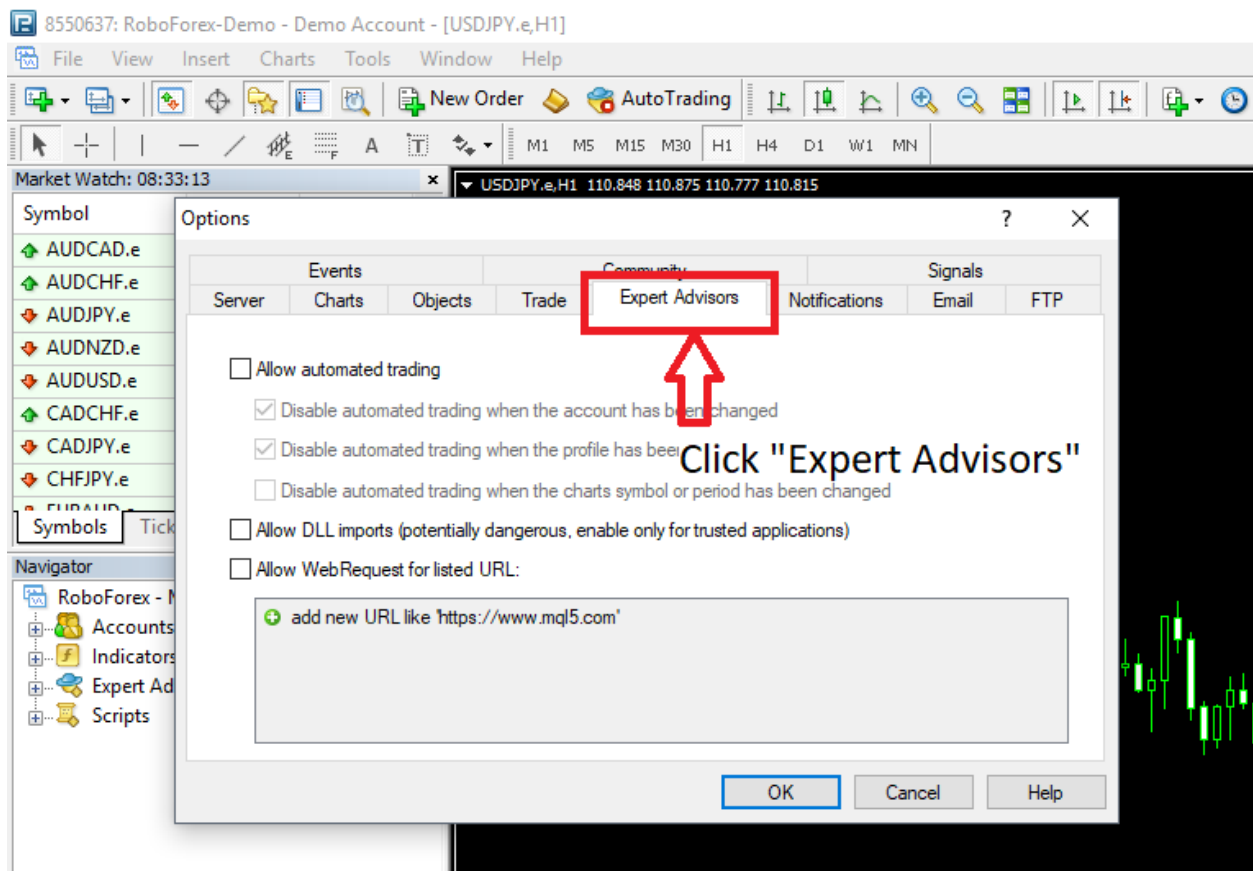
- Click Tools, EXAMPLE IMAGE: <https://imgur.com/190f1FI>



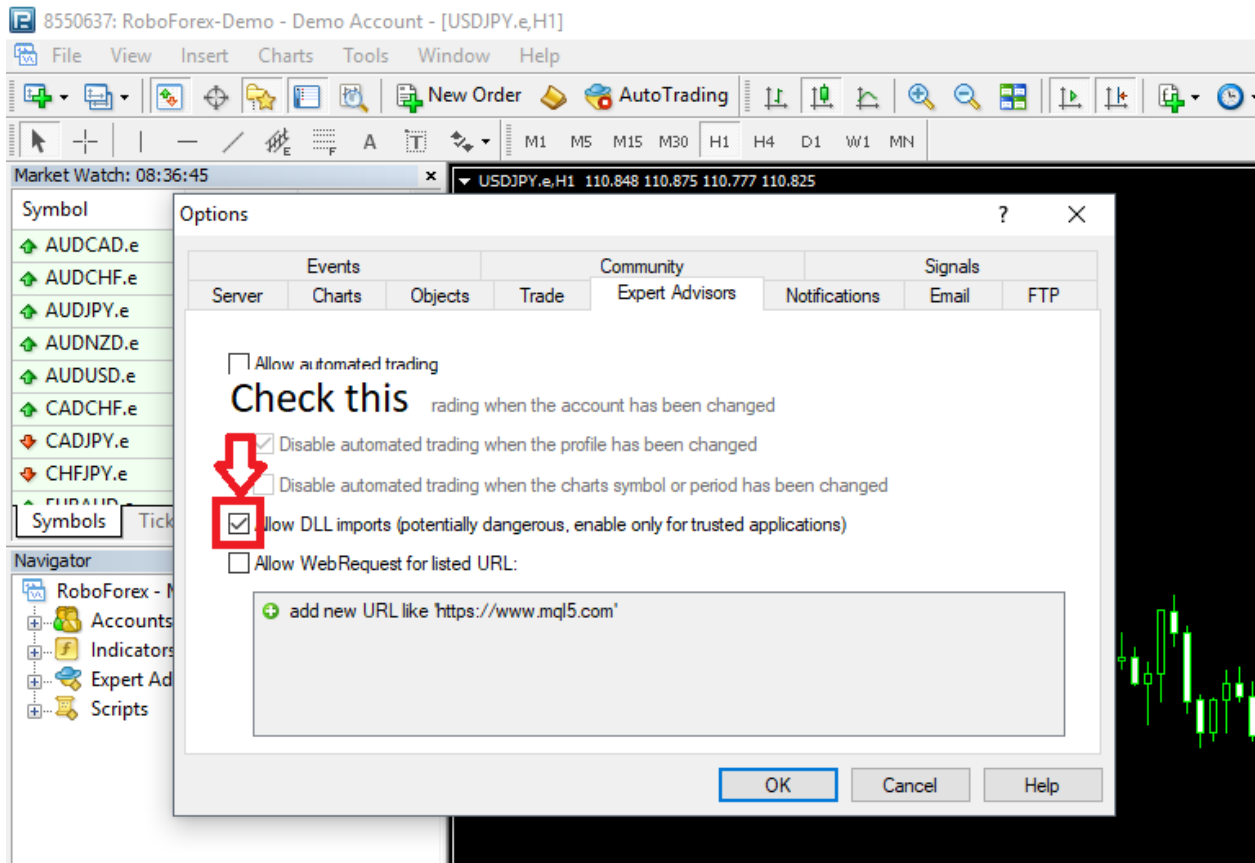
- Click Options, EXAMPLE IMAGE: <https://imgur.com/z7wIOHu>



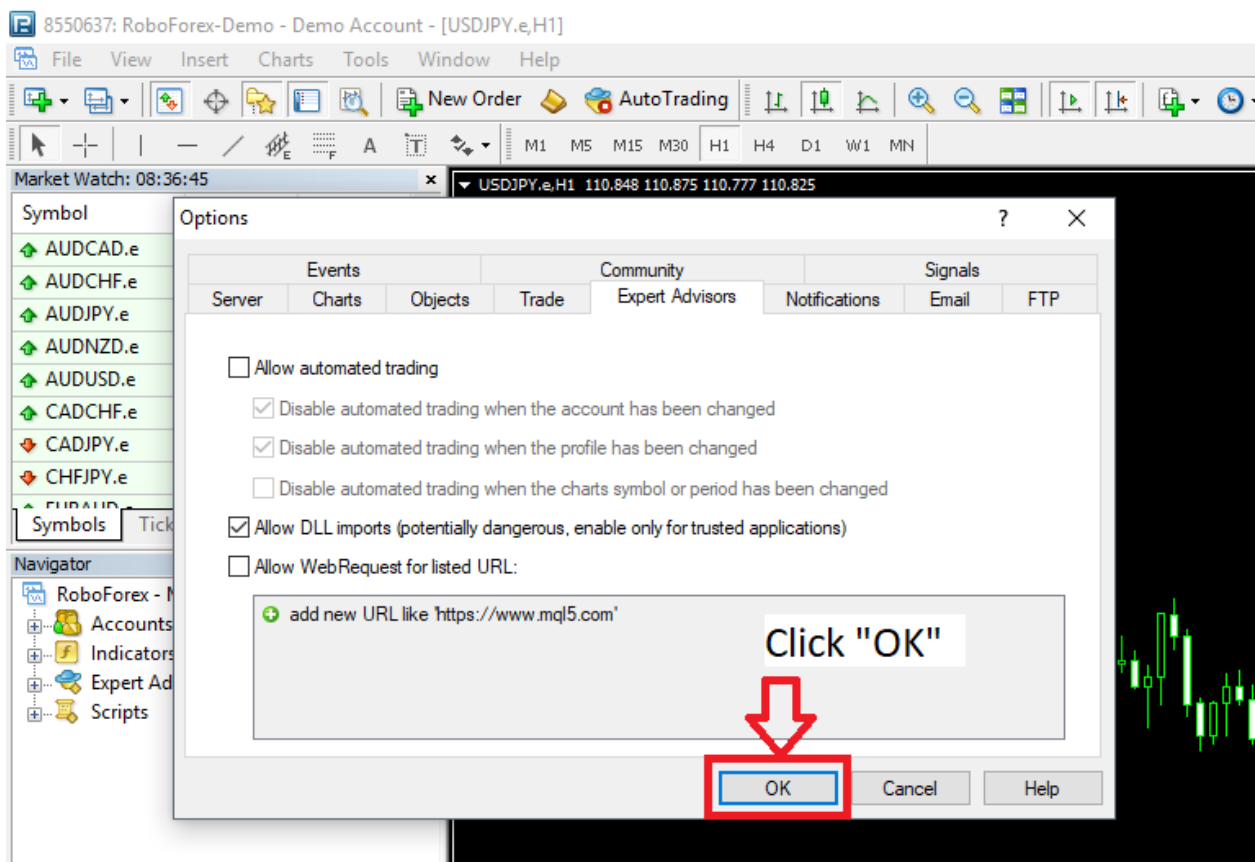
- Click Expert Advisors Tab, EXAMPLE IMAGE: <https://imgur.com/62CPVXB>



- Check Allow DLL Imports, EXAMPLE IMAGE: <https://imgur.com/6RiEIJ1>

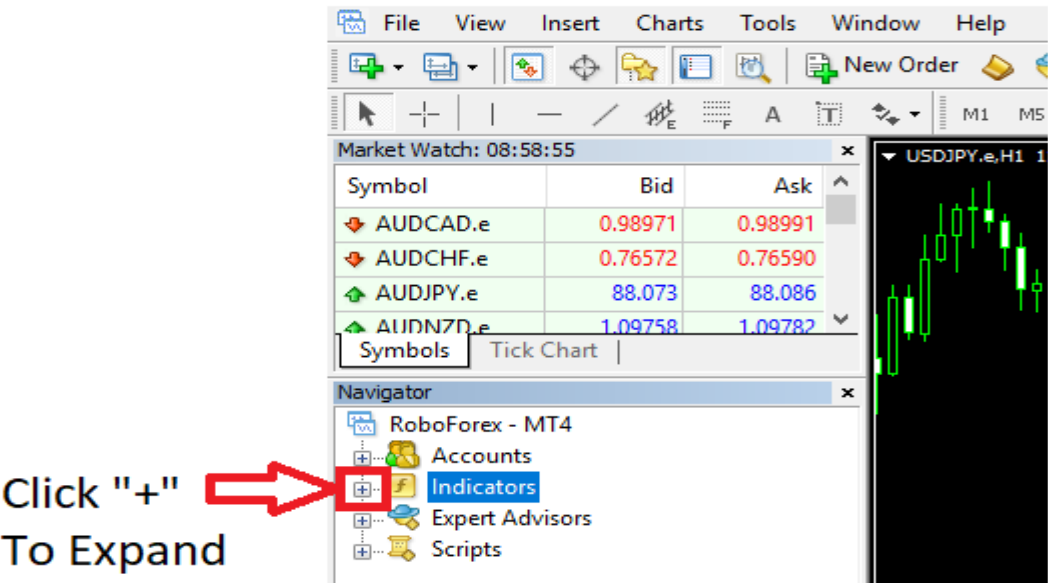


- Click OK, EXAMPLE IMAGE: <https://imgur.com/Zab5X5V>

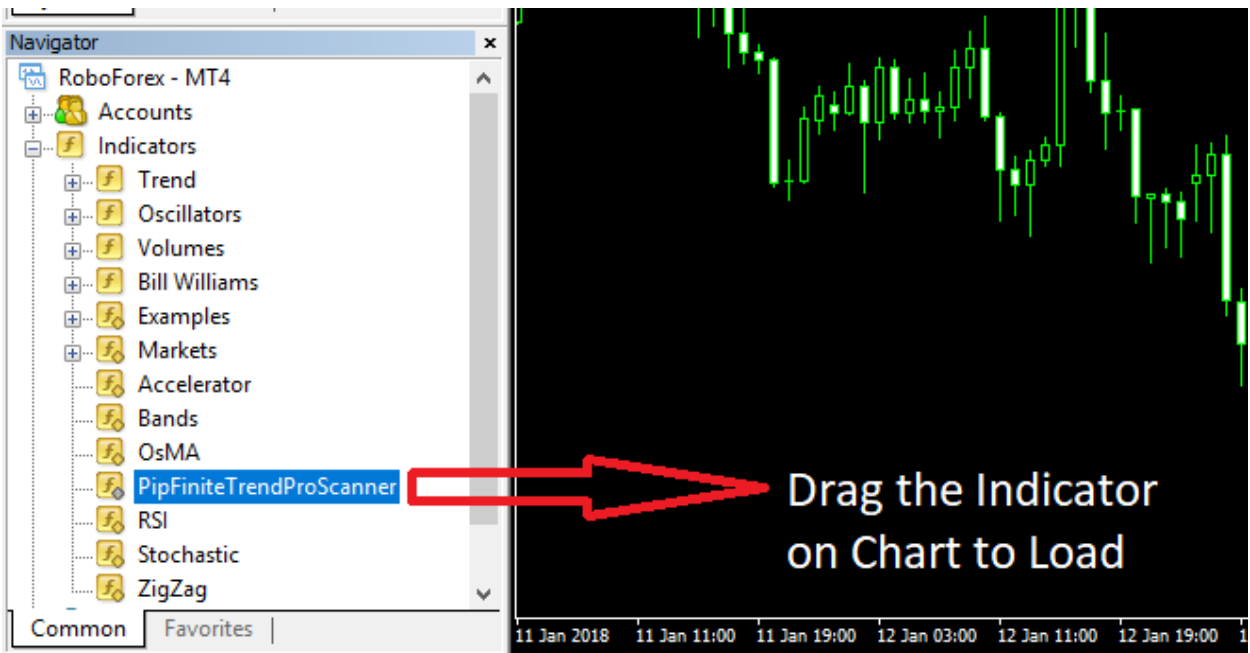


5. Attach “PipFiniteTrendProScanner” on the chart. You can find it on “Indicators” section

- Click “+” Symbol on the Indictors, EXAMPLE IMAGE: <https://imgur.com/lrGu1eg>

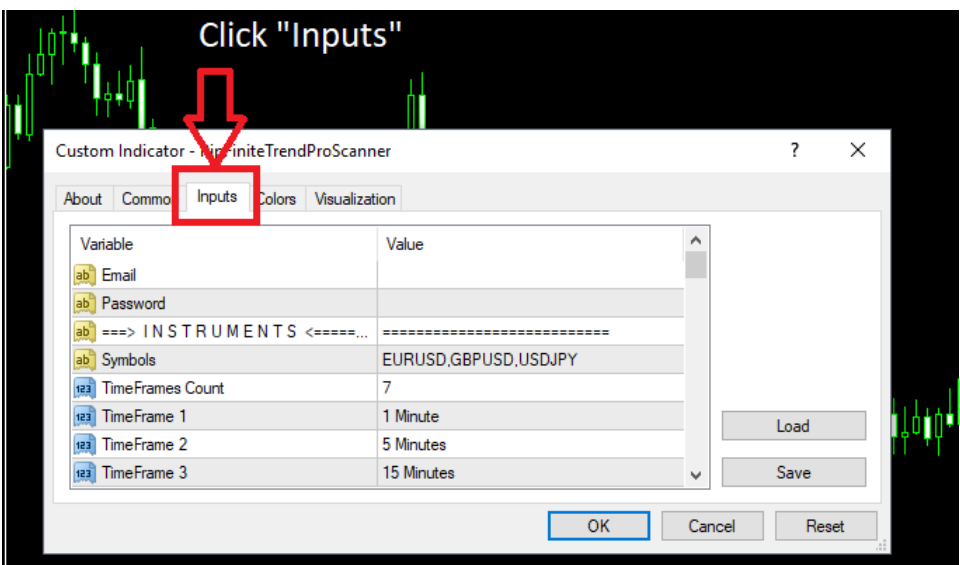


- Attach the indicator on the chart, EXAMPLE IMAGE: <https://imgur.com/etAVRts>



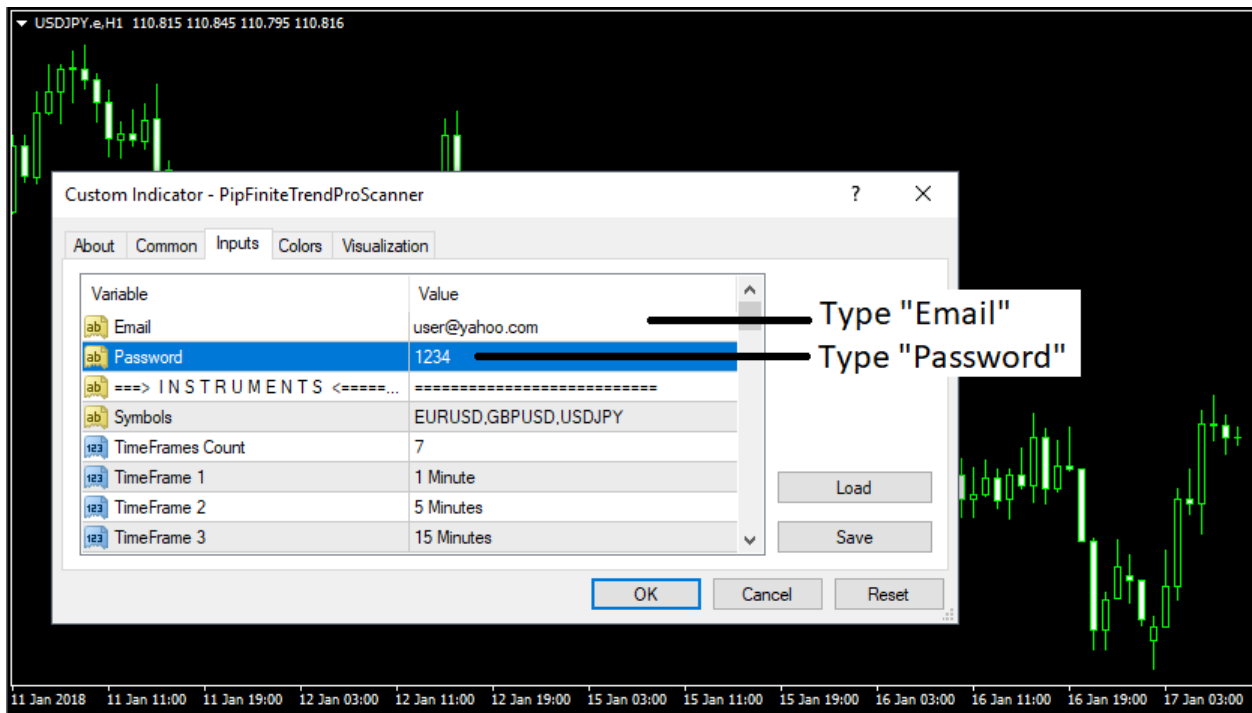
6. Click the Inputs Tab

- EXAMPLE IMAGE: <https://imgur.com/1UwH1Bv>



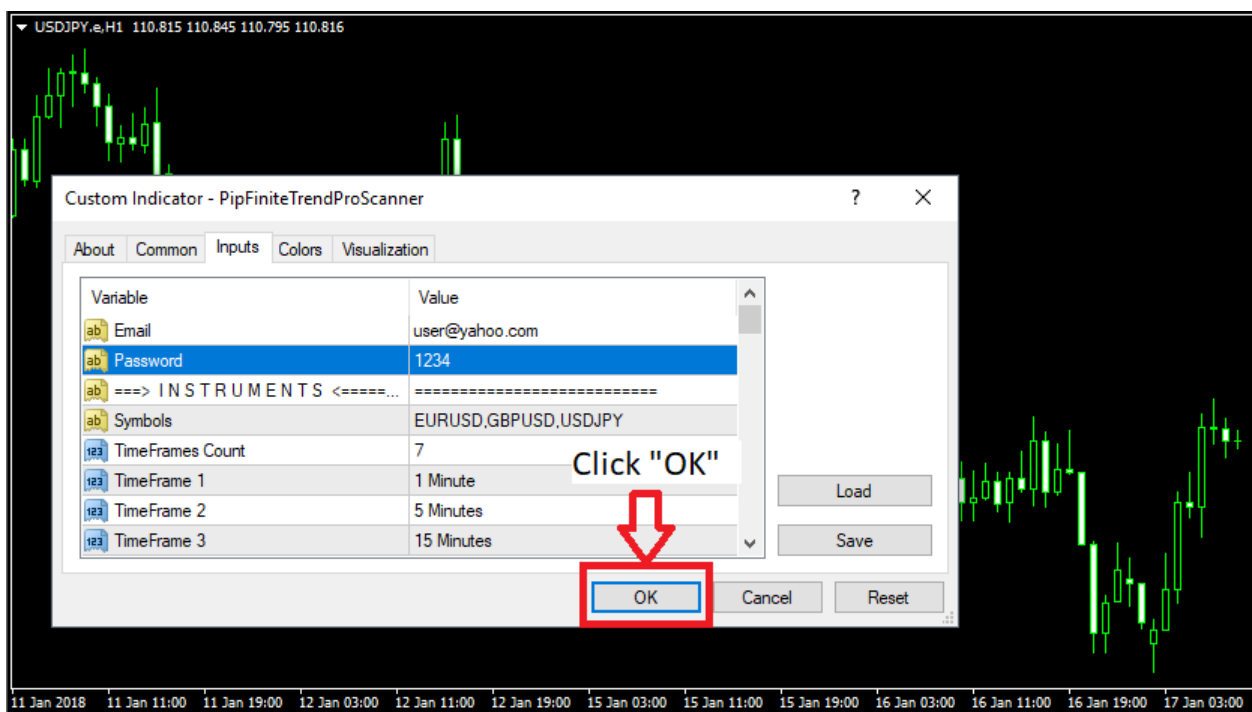
7. Type the “Email” & “Password” we provided

- EXAMPLE IMAGE: <https://imgur.com/OWjWggF>



8. Click OK

- EXAMPLE IMAGE: <https://imgur.com/tTbUXQY>



9. Live internet connection is required to access our servers.

- Restart your MT4 if there is no connection after using the installer

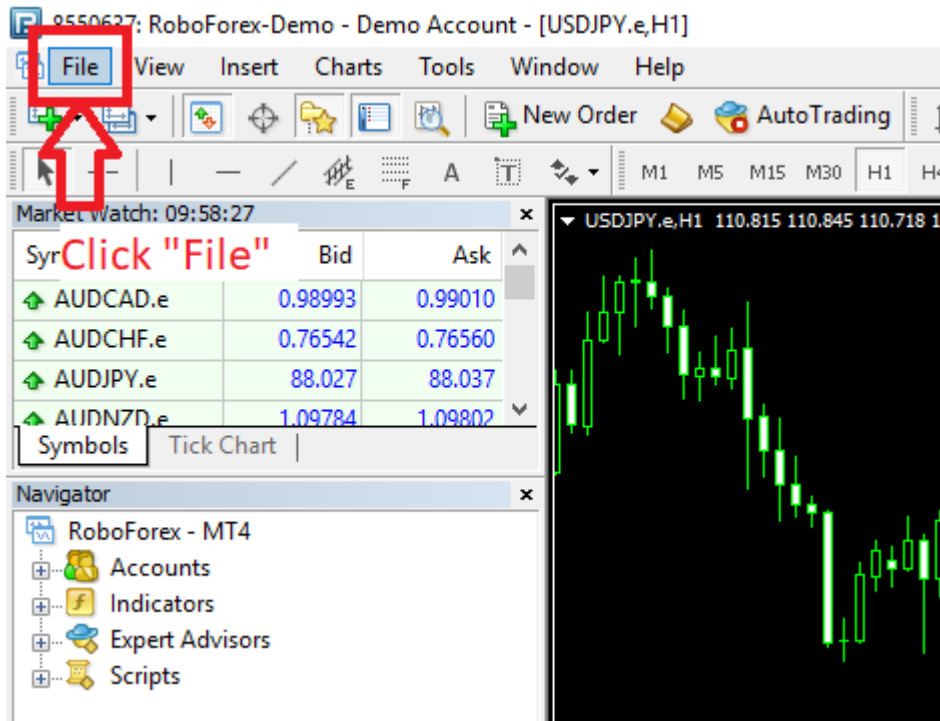
# MANUAL INSTALLATION

NOTE: All files needed are found inside "Manual Installation" Folder

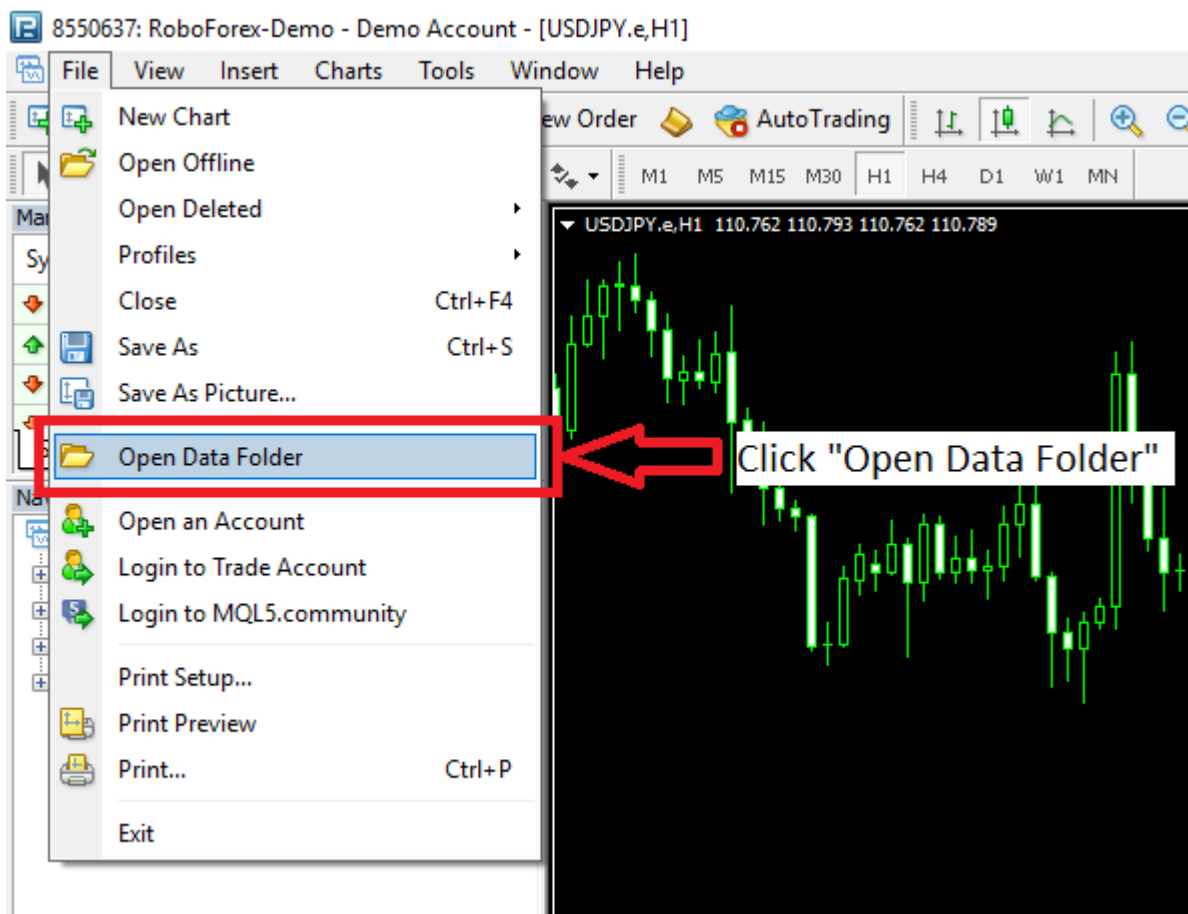
1. Open MT4

2. Navigate the MQL4 Folder

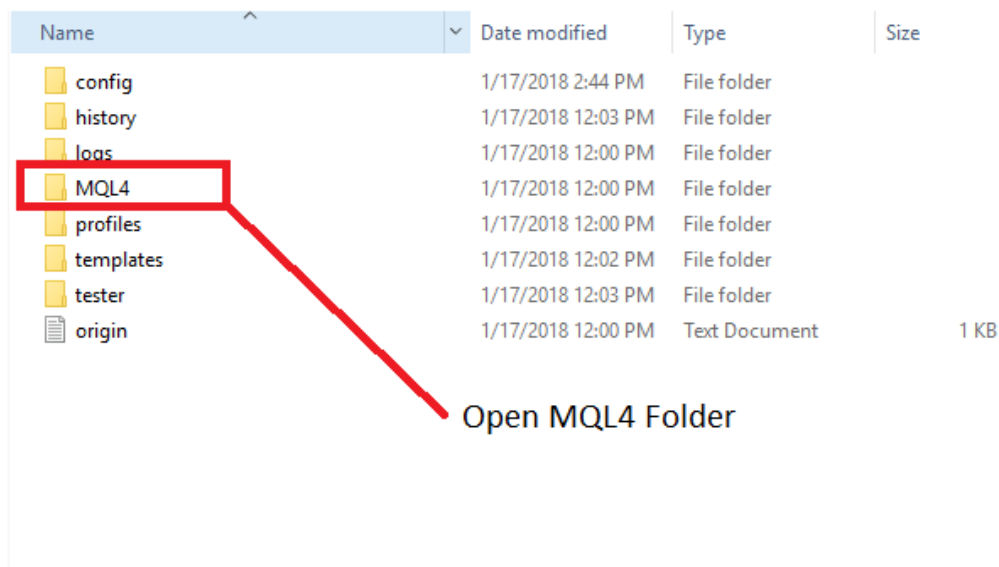
- Click File, EXAMPLE IMAGE: <https://imgur.com/mDgHVzU>



- Click Open Data Folder , EXAMPLE IMAGE: <https://imgur.com/mLf7sqs>

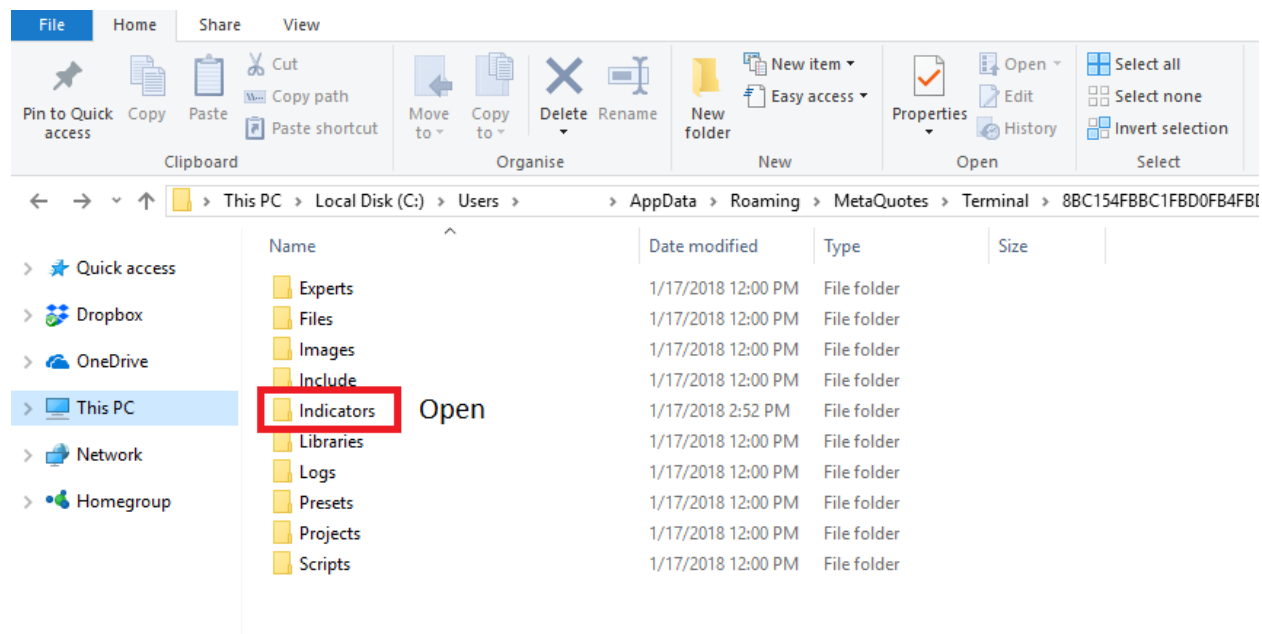


- Open MQL4 Folder , EXAMPLE IMAGE: <https://imgur.com/Un43Z32>



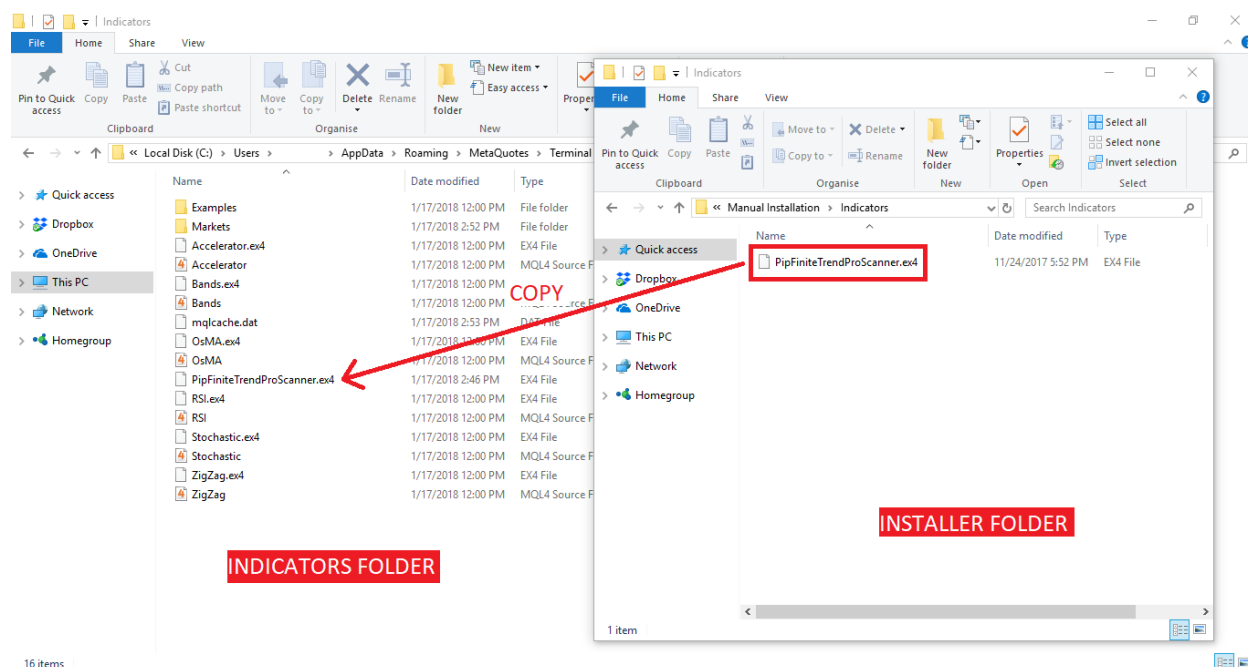
### 3. Open Indicators folder

- EXAMPLE IMAGE: <https://imgur.com/qKsVoJw>



### 4. Copy “PipFiniteTrendProScanner.ex4” on Indicators Folder

- EXAMPLE IMAGE: <https://imgur.com/VvloU1u>

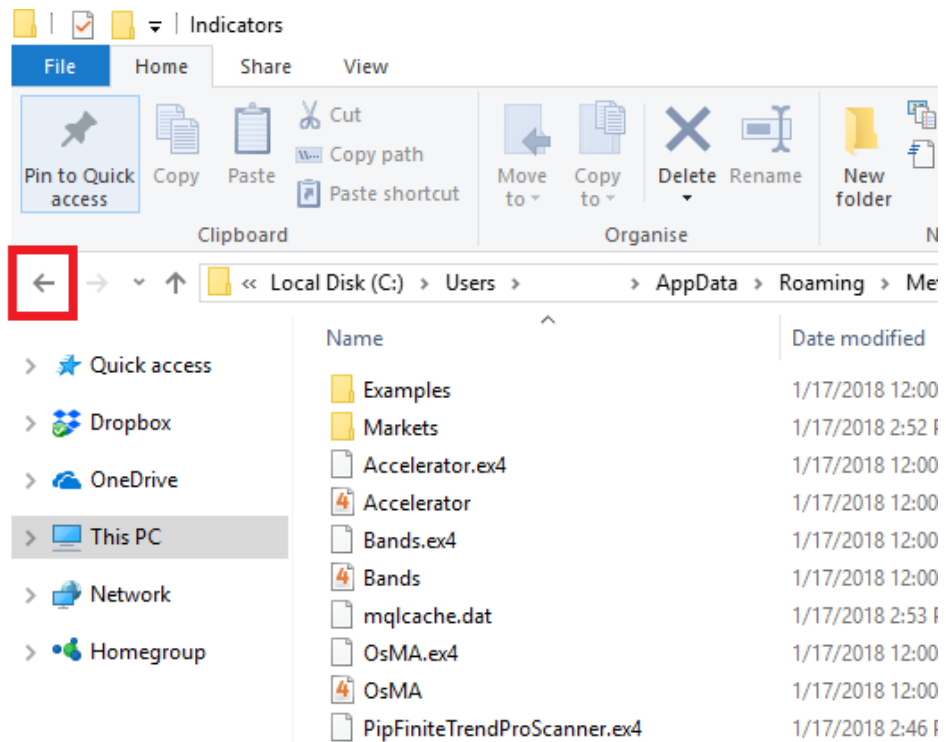




## 5. Navigate back to MQL4 Folder

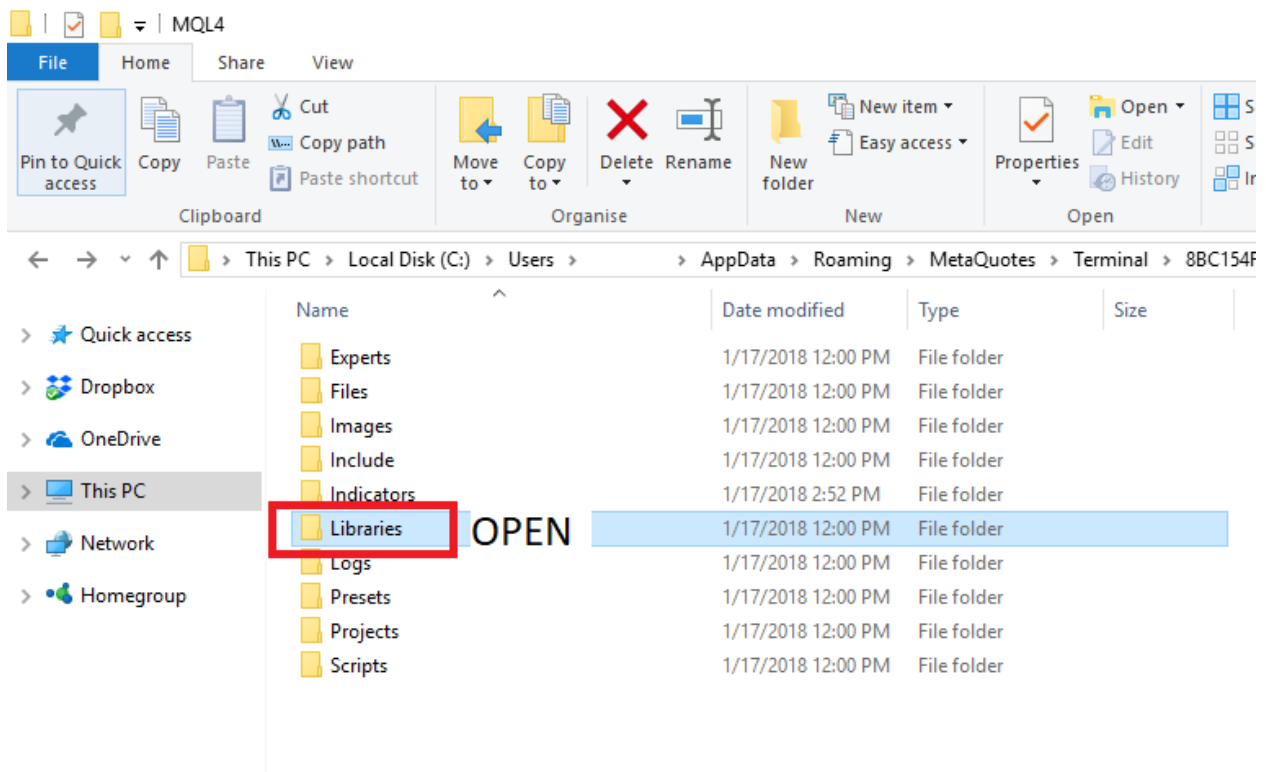
- EXAMPLE IMAGE: <https://imgur.com/83hMMdz>

Click  
to go back  
MQL4 folder



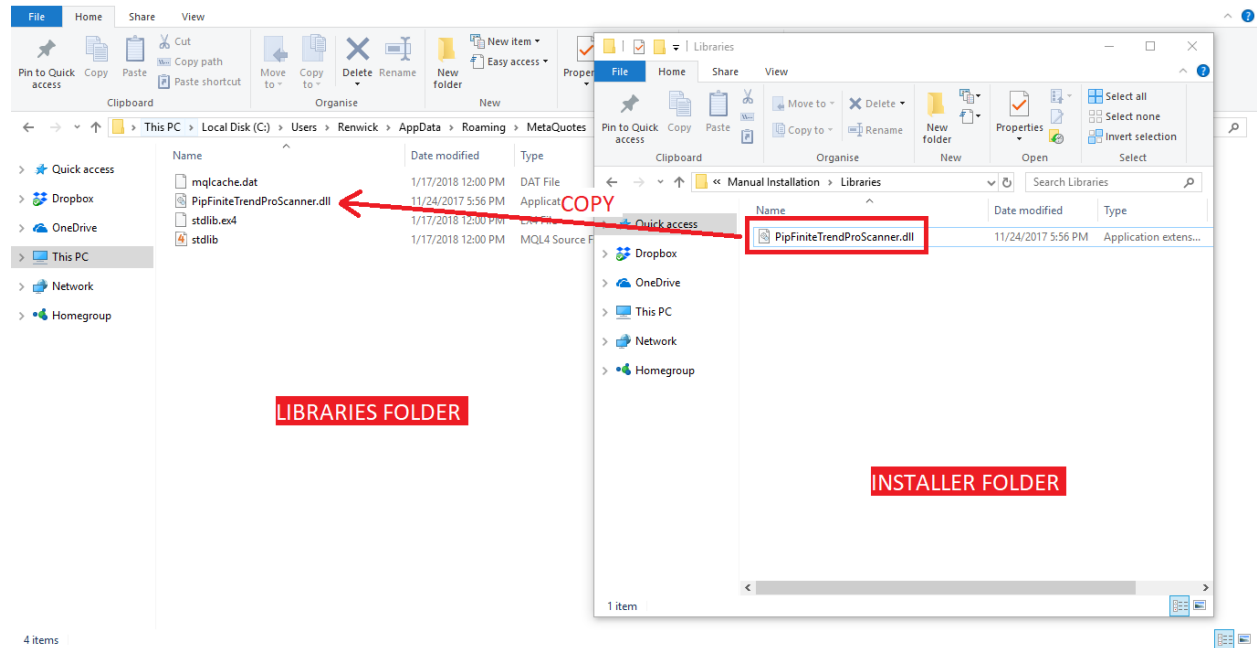
## 6. Open Libraries folder

- EXAMPLE IMAGE: <https://imgur.com/Jx53nmo>



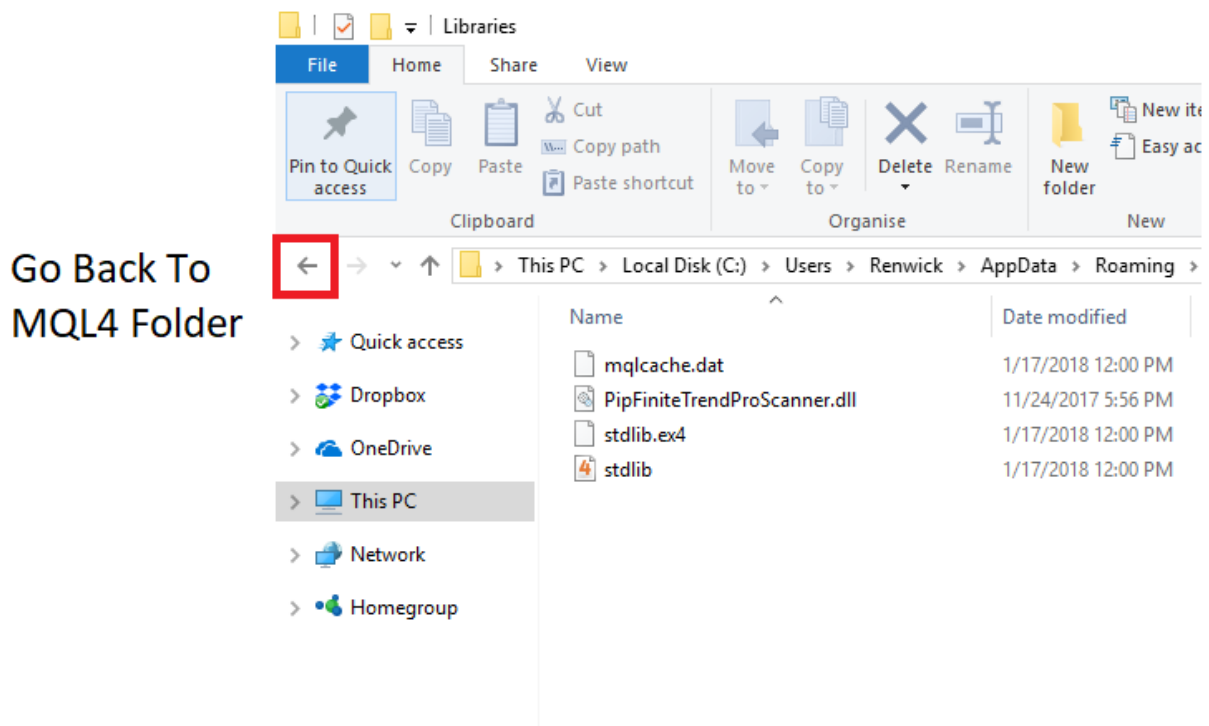
## 7. Copy “PipFiniteTrendProScanner.dll” on Libraries Folder

- EXAMPLE IMAGE: <https://imgur.com/2jFKG0P>



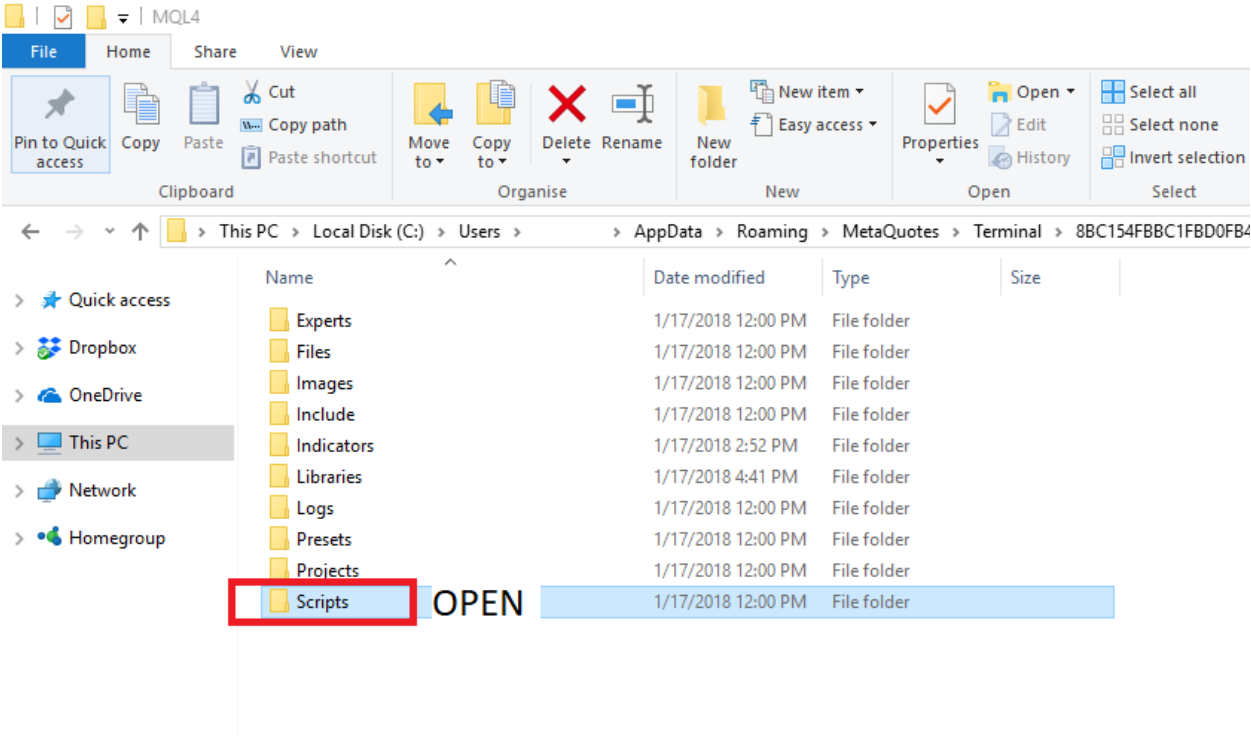
## 8. Navigate back to MQL4 Folder

- EXAMPLE IMAGE: <https://imgur.com/T4r9l7f>



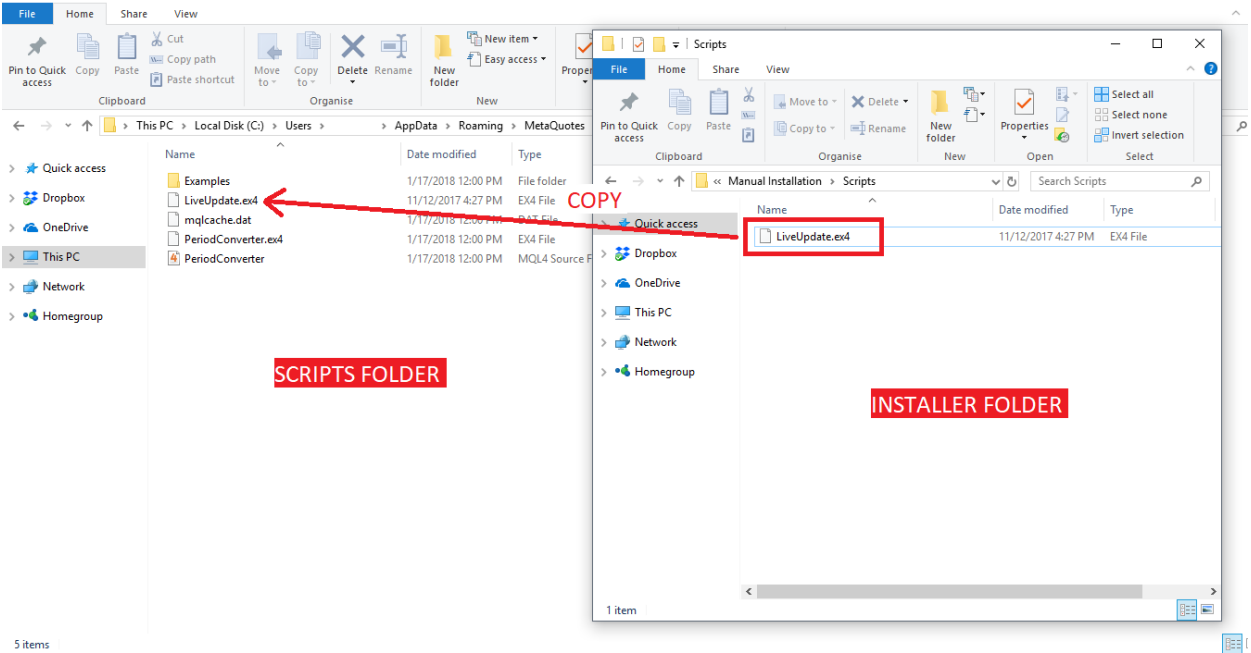
9. Open Scripts folder

- EXAMPLE IMAGE: <https://imgur.com/FAPsQZm>



10. Place “LiveUpdate.ex4” on Scripts folder. Replace if duplicate file exist.

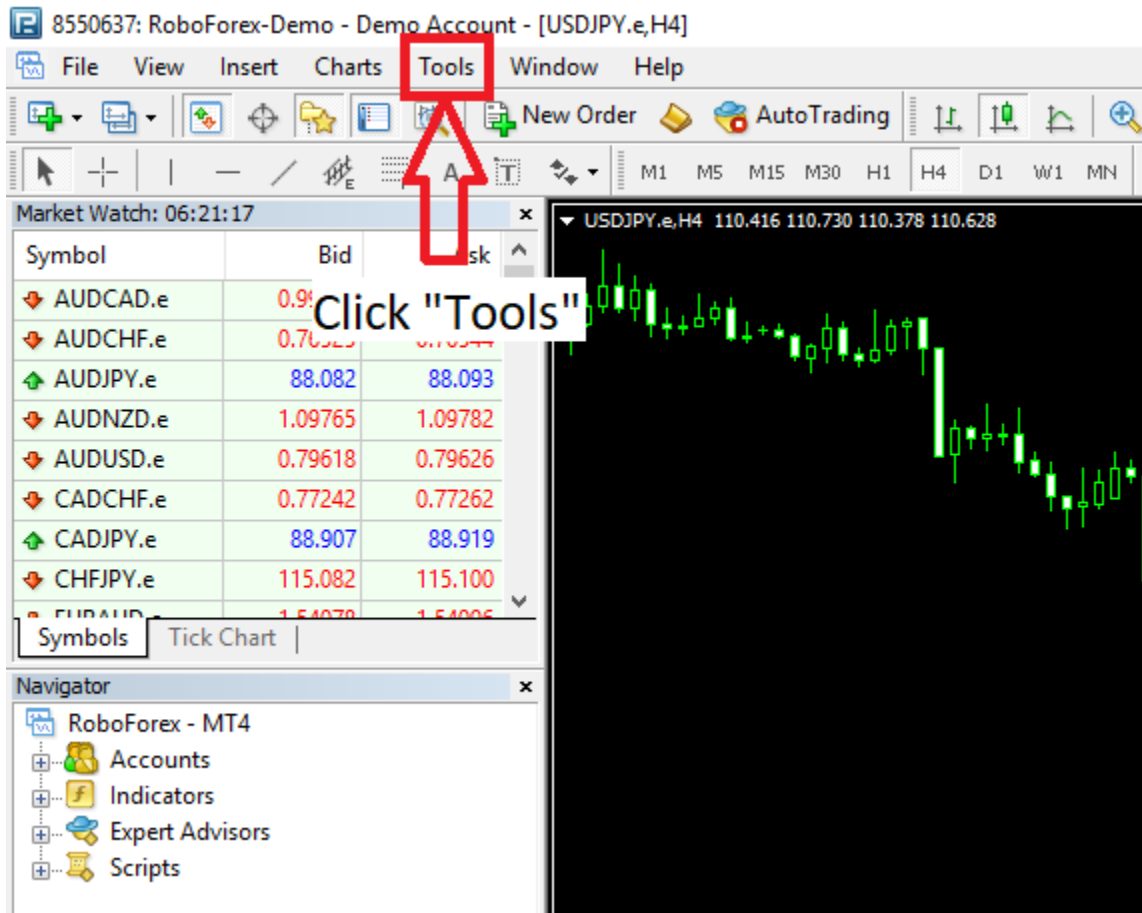
- EXAMPLE IMAGE: <https://imgur.com/aRCNu3X>



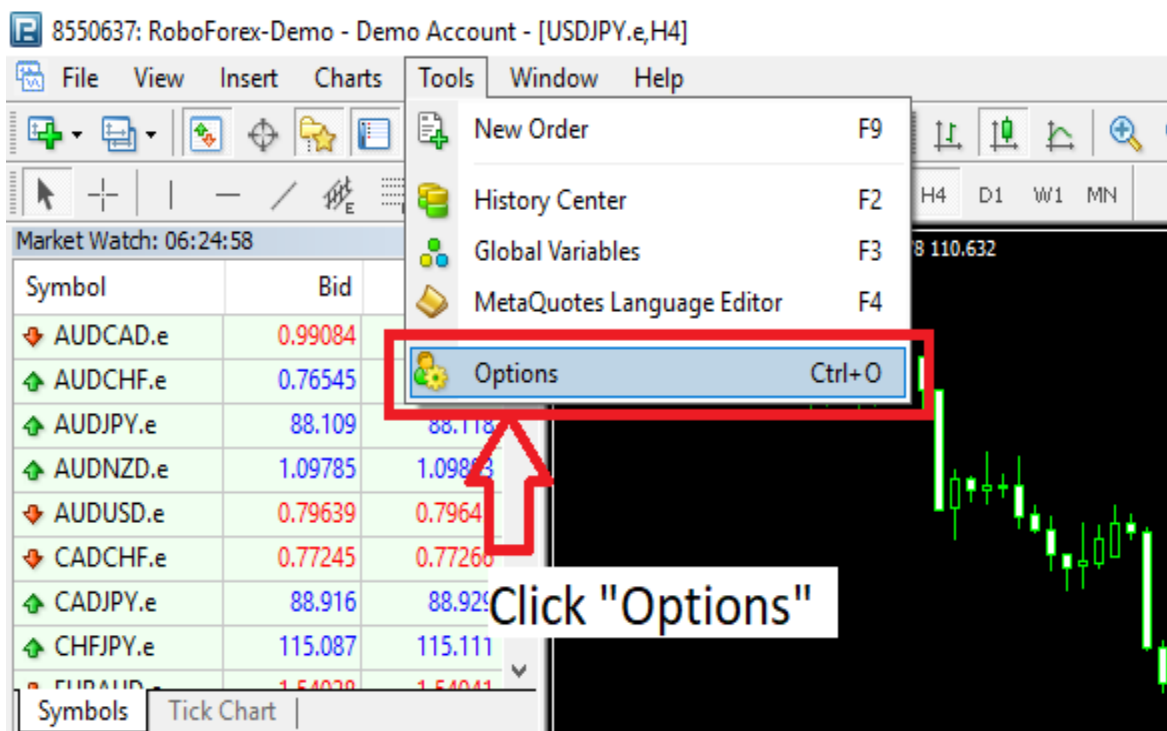
11. Restart (Open and Close MT4) for changes to take effect

## 12. Allow DLL Imports

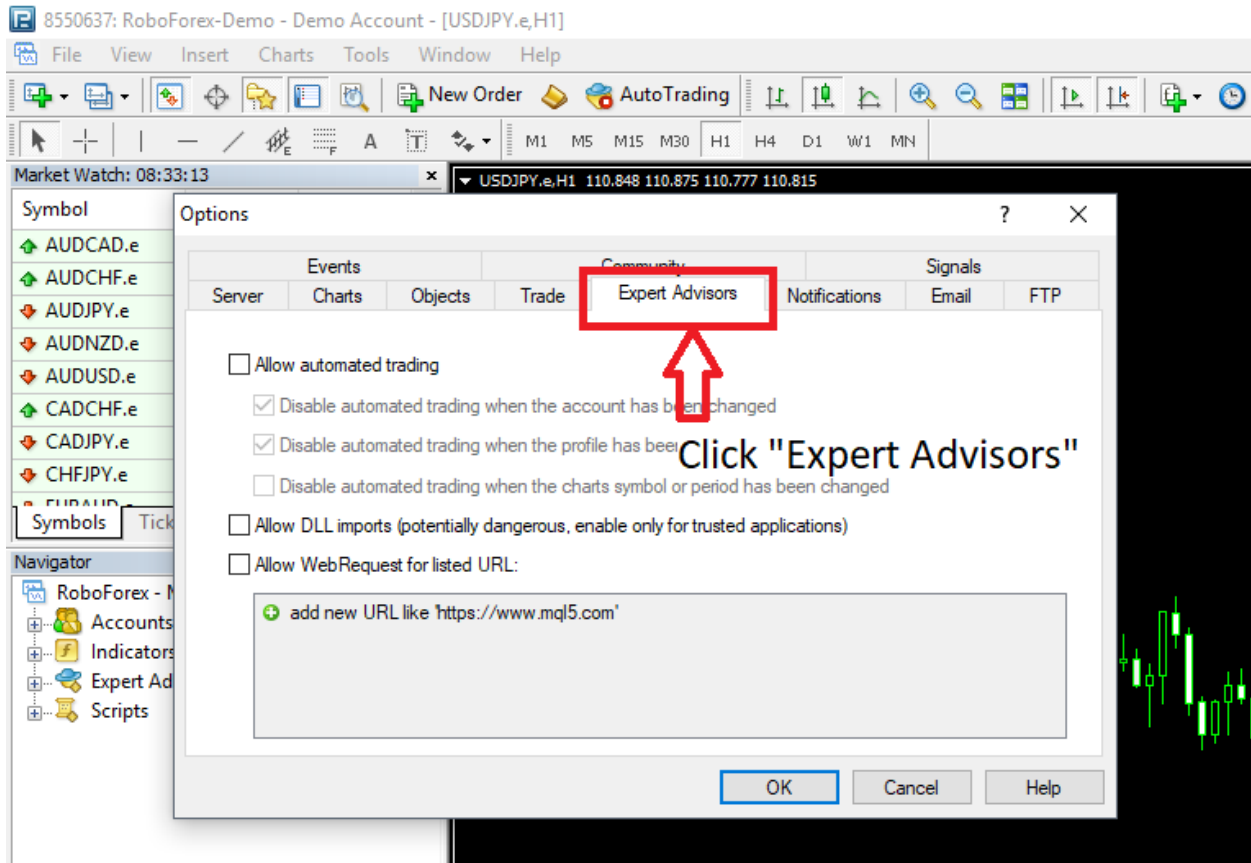
- Click Tools, EXAMPLE IMAGE: <https://imgur.com/190f1Fl>



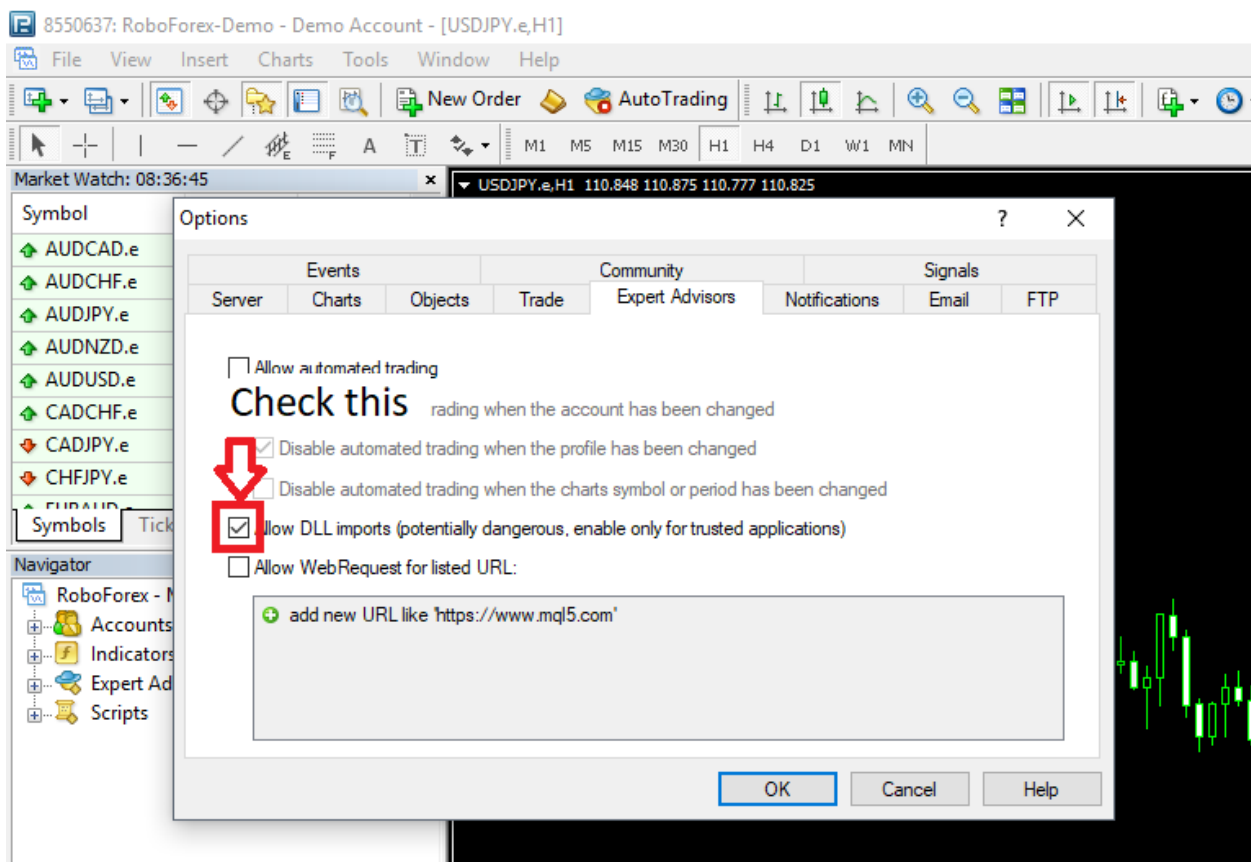
- Click Options, EXAMPLE IMAGE: <https://imgur.com/z7wIOHu>



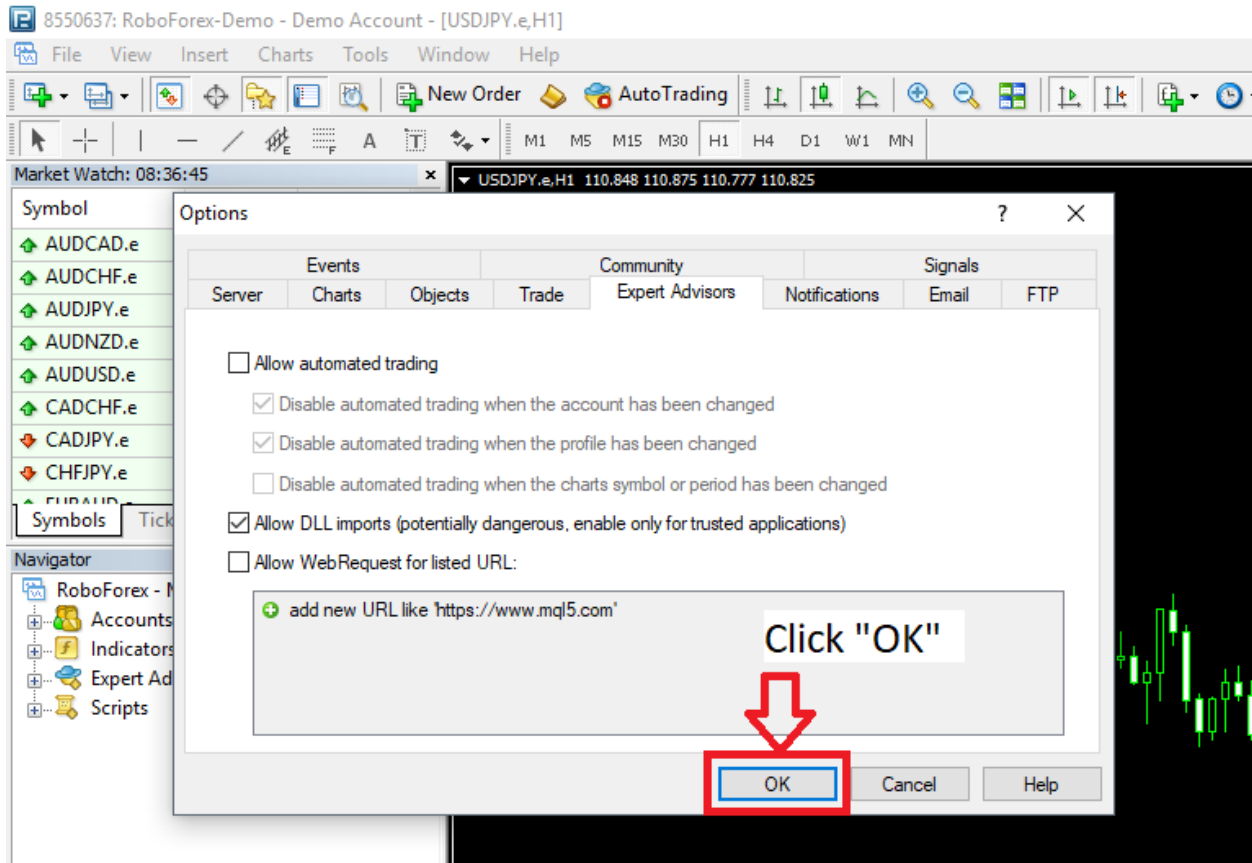
- Click Expert Advisors Tab, EXAMPLE IMAGE: <https://imgur.com/62CPVXB>



- Check Allow DLL Imports, EXAMPLE IMAGE: <https://imgur.com/6RiEIJ1>

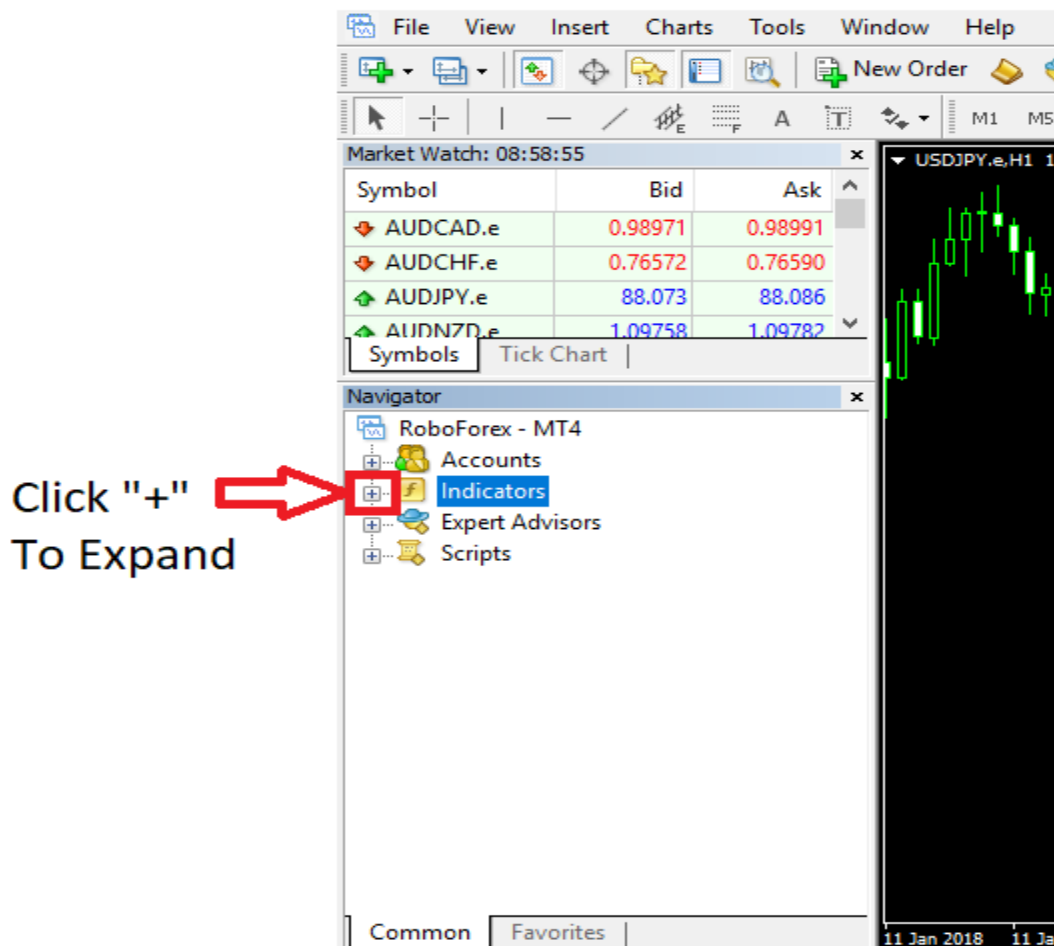


- Click OK, EXAMPLE IMAGE: <https://imgur.com/Zab5X5V>

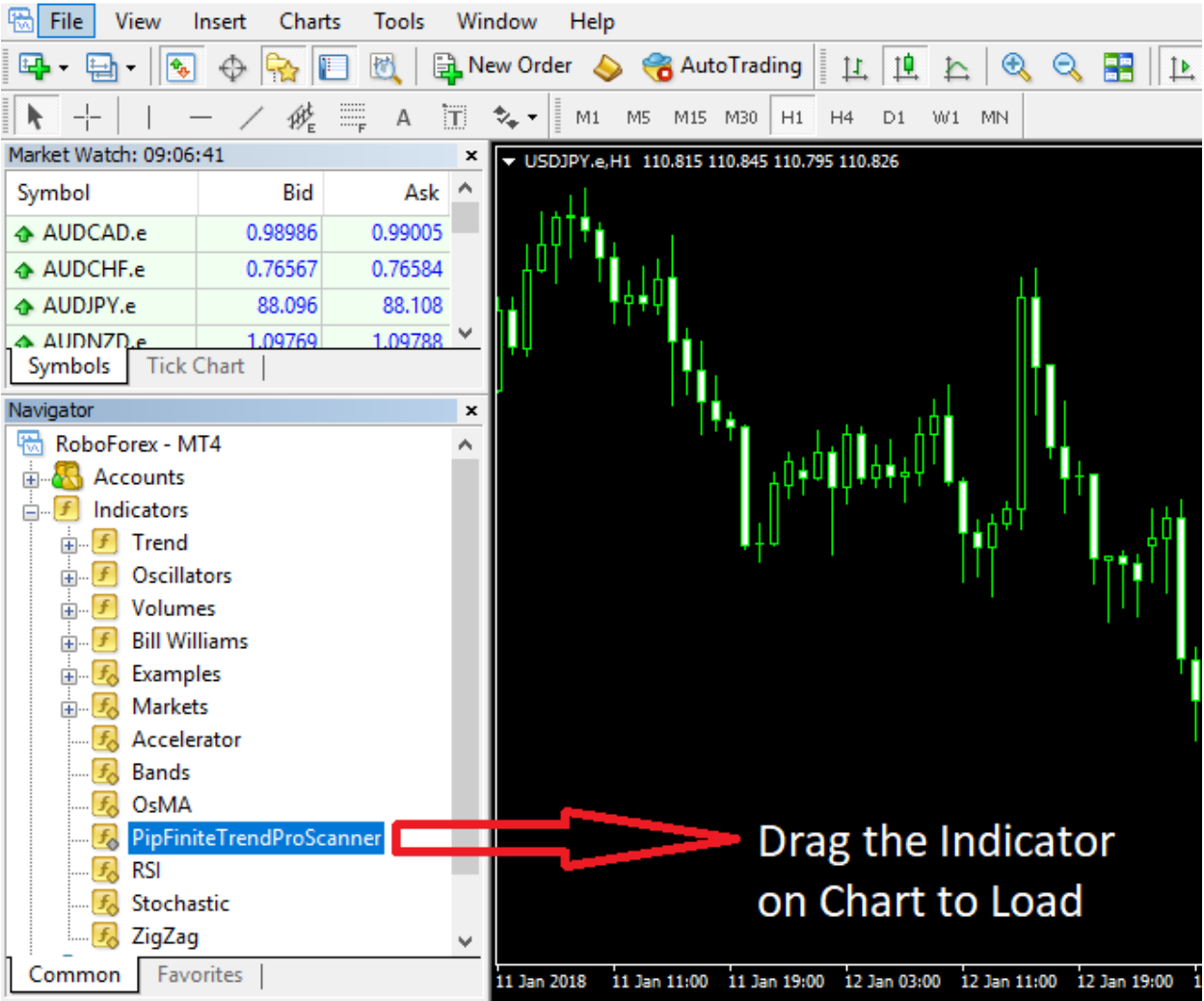


13. Attach “PipFiniteTrendProScanner” on the chart. You can find it on “Indicators” section

- Click “+” Symbol on the Indictors, EXAMPLE IMAGE: <https://imgur.com/lrGu1eg>

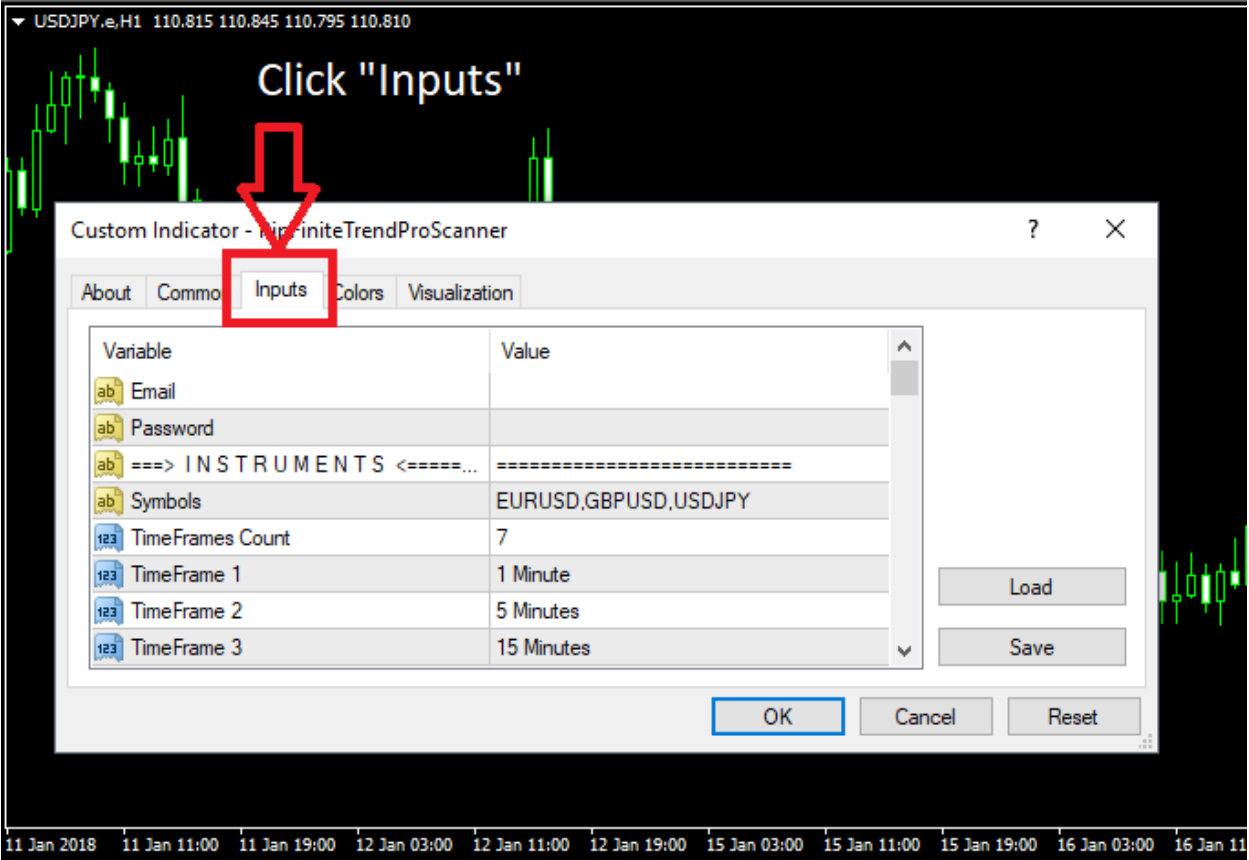


- Attach the indicator on the chart, EXAMPLE IMAGE: <https://imgur.com/etAVRts>



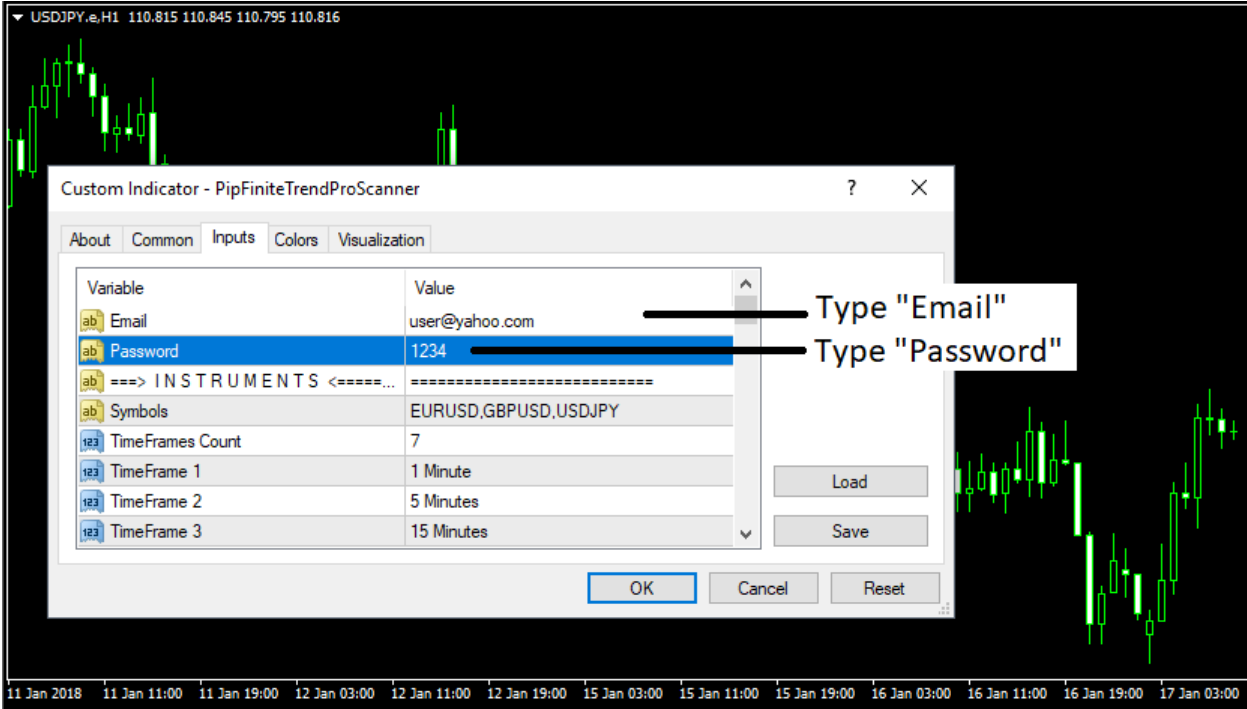
14. Click the Inputs Tab

- EXAMPLE IMAGE: <https://imgur.com/1UwH1Bv>



15. Type the “Email” & “Password” we provided

- EXAMPLE IMAGE: <https://imgur.com/OWjWggF>



16. Click OK

- EXAMPLE IMAGE: <https://imgur.com/tTbUXQY>

