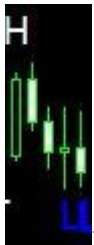




the lowest bearish candle is engulfed by bullish candle. In this case, the bull candle close price higher than the open price of the last bearish candle



the highest bullish candle is engulf by several candles. The last candle close below the highest bullish candle's open price confirming the bearish engulf



the highest bullish candle is engulfed by bearish candle. The bear candle close price lower than the open price of the last bullish candle



the lowest bearish candle is engulfed by bullish candle. In this case, the bull candle close price higher than the open price of the last bearish candle



the highest bullish candle is engulfed by several candles. The last candle close below the highest bullish candle's open price confirming the bearish engulf