

HiLo Zone

General:

indicator [i-HighLow.mq4](#)

EA should work on 4, 5 digit broker, CDFs and Indices.

color = **cayon** -> parameters for dashboard (see picture)

display in red corner:

profit / loss for **Long & Short** on chart in a corner

used **magic numbers for L / S**

Parameters (Long):

Long = TRUE/FALSE (ON/FF)

LongN = 10 (green highest high value) (last bar is the trigger for current price)

LongN_Timeframe = 60 (example 60 minutes / if 0 this timeframe)

EntryDisL = 20 pips (Distance (vertical) between last Entry / next Long Signal should be 20 pips higher or lower from last entry price)

StopLongTrDateTime = date ; time (**blue** line / **should be moved on chart as vertical line**)

StopLongTrDateTimeLine = TRUE/FALSE (ON/FF) (**blue** line)

StopLongTrDateTimeVis = TRUE / FALSE (Strop Trading shown on chart) ON / OFF

StopLongTrLineVal = 1.3000 (value = 0 INACTIVE / **red horizontal line** – no long signal above this value/ **should be moved on chart as horizontal line**)

StopLongTrLineValVis= TRUE / FALSE (shown value above on chart)

StartLongTrLineVal = 1.1000 (value = 0 INACTIVE / **green horizontal line** – no long signal under this value / **should be moved on chart as horizontal line**)

AutoMoveStartLongTrLineVal = 50 (in pips (if 0 = OFF) - **green horizontal line** follows price up if value > 0)

StartLongTrLineValVis= TRUE / FALSE (shown value above on chart)

LongMartin = 0, 1 or 2 (0 = OFF, 1 DoubleFixLot, 2 DoubleLot)

DoubleFixLotL = 2 (if 0 OFF / if 2 x from current fix lot)

DoubleLotL = 2 (double last traded lot size if last trade was a lost)

LongMagic1 = 11;

LongMagic2 = 12;

LongMagic3 = 13;

AddLong = TRUE/FALSE (ON/FF) (if TRUE – add long lot after x distance for MagicNumber. = **LongMagic3**)

AddLongLot = 0.1;

AddLongDis = 30; (in Pips - Distance after Entry price of first buy)

Info - Exit LongMagic1

ExitL1Method = 2 (1 for trailing in Pips; 2 for trailing in **red** line (lowest low x bars) if method 2 should be visible on chart

StoppMethodL1 = 1 (0 = OFF / 1 = Pips / 2 = lowest low of x bars (HiLo indicator))

StoppM1L1 = 100 (stop method 1 - in pips)

StoppM2L1 = 20 (stop method = 2 / lowest low of 20 bars)

TakeProfitL1 = 0 (in pips / OFF if 0)

TrailingStopL1 = 30 (in pips)

ExitLowestL1 = 30 (in **lowest low -red line**)

StartTrailL1 = 50 (valid for **both** Exit Methods - start trailing after price moved over this value (in pips) up)

Info - Exit LongMagic2

ExitL2Method = 2 (1 for trailing in Pips; 2 for trailing in **orange** line (lowest low x bars) if method 2 should be visible on chart

StoppMethodL2 = 1 (0 = OFF / 1 = Pips / 2 = lowest low of x bars (HiLo indicator))

StoppM1L2 = 100 (stop method 1 - in pips)

StoppM2L2 = 20 (stop method = 2 / lowest low of 20 bars)

TakeProfitL2 = 0 (in pips / OFF if 0)

TrailingStopL2 = 30 (in pips)

ExitLowestL2 = 10 (in **lowest low -red line**)

StartTrailL2 = 50 (valid for **both** Exit Methods - start trailing after price moved over this value (in pips) up)

Info - Exit LongMagic3

ExitL3Method = 2 (1 for trailing in Pips; 2 for trailing in **orange** line (lowest low x bars) if method 2 should be visible on chart

StoppMethodL3 = 1 (0 = OFF / 1 = Pips / 2 = lowest low of x bars (HiLo indicator))

StoppM1L3 = 100 (stop method 1 - in pips)

StoppM2L3 = 20 (stop method = 2 / lowest low of 20 bars)

TakeProfitL3 = 0 (in pips / OFF if 0)

TrailingStopL3 = 30 (in pips)

ExitLowestL3 = 5 (in **lowest low -red line**)

StartTrailL3 = 50 (valid for **both** Exit Methods - start trailing after price moved over this value (in pips) up)

ProfitTrailingL1 (Magic1, Magic2, Magic3)

InProfitPTL1 = 500 (if current profit in \$ over value)

StoppPTL1 = 100 (in pips / OFF if 0)

TrailingStopPTL1 = 50 (in pips)

StartTrailPTL1 = 0 (start trailing after price moved over this value (in pips) up)

ProfitTrailingL2 (Magic1, Magic2, Magic3)

InProfitPTL2 = 700 (if current profit in \$ over value)

StoppPTL2 = 100 (in pips / OFF if 0)

TrailingStopPTL2 = 25 (in pips)

StartTrailPTL2 = 0 (start trailing after price moved over this value (in pips) up)

ProfitTrailingL3 (Magic1, Magic2, Magic3)

InProfitPTL3 = 1000 (if current profit in \$ over value)

StoppPTL3 = 100 (in pips / OFF if 0)

TrailingStopPTL3 = 15 (in pips)

StartTrailPTL3 = 0 (start trailing after price moved over this value (in pips) up)

Parameters (Short):

Short = TRUE/FALSE (ON/FF)

ShortN = 10 (dark red lowest low value) (last bar is the trigger for current price)

ShortN_Timeframe = 60 (example 60 minutes / if 0 this timeframe)

EntryDisS = 20 pips (Distance (vertical) between last Entry / next Short Signal should be 20 pips higher or lower from last entry price)

StopShortTrDateTime = date ; time (dark blue line / **should be moved on chart as vertical line**)

StopShortTrDateTimeLine = TRUE/FALSE (ON/FF) (blue line)

StopShortTrDateTimeVis = TRUE / FALSE (Strop Trading shown on chart) ON / OFF

StopShortTrLineVal = 1.1000 (value = 0 INACTIVE / dark red horizontal line – no short signal below this value/ **should be moved on chart as horizontal line**)

StopShortTrLineValVis = TRUE / FALSE (shown value above on chart)

StartShortTrLineVal = 1.3000 (value = 0 INACTIVE / dark green horizontal line – no short signal above this value / **should be moved on chart as horizontal line**)

AutoMoveStartShortTrLineVal = 50 (in pips (if 0 = OFF) – dark green horizontal line follows price down if value > 0)

StartShortTrLineValVis = TRUE / FALSE (shown value above on chart)

ShortMartin = 0, 1 or 2 (0 = OFF, 1 DoubleFixLot, 2 DoubleLot)

DoubleFixLotS = 2 (if 0 OFF / if 2 x from current fix lot)

DoubleLotS = 2 (double last traded lot size if last trade was a lost)

ShortMagic1 = 21;

ShortMagic2 = 22;

ShortMagic3 = 23;

AddShort = TRUE/FALSE (ON/FF) (if TRUE – add short lot after x distance for MagicNumber. = **ShortMagic3**)

AddShortLot = 0.1;

AddShortDis = 30; (in Pips - Distance after Entry price of first sell)

Info - Exit ShortMagic1

ExitS1Method = 2 (1 for trailing in Pips; 2 for trailing in dark orange line (highest high x bars) if method 2 should be visible on chart

StoppMethodS1 = 1 (0 = OFF / 1 = Pips / 2 = highest high of x bars (HiLo indicator))

StoppM1S1 = 100 (stop method 1 - in pips)

StoppM2S1 = 20 (stop method = 2 / lowest low of 20 bars)

TakeProfitS1 = 0 (in pips / OFF if 0)

TrailingStopS1 = 30 (in pips)

ExitHighestS1 = 30 (in highest high -orange line)

StartTrailS1 = 50 (valid for both Exit Methods - start trailing after price moved over this value (in pips) down)

Info - Exit ShortMagic2

ExitS2Method = 2 (1 for trailing in Pips; 2 for trailing in **dark orange** line (highest high x bars) if method = 2 should be visible on chart)

StoppMethodS2 = 1 (0 = OFF / 1 = Pips / 2 = highest high of x bars (HiLo indicator))

StoppM1S2 = 100 (stop method 1 - in pips)

StoppM2S2 = 20 (stop method = 2 / lowest low of 20 bars)

TakeProfitS2 = 0 (in pips / OFF if 0)

TrailingStopS2 = 30 (in pips)

ExitHighestS2 = 10 (in high -red line)

StartTrailS2 = 50 (valid for **both** Exit Methods - start trailing after price moved over this value (in pips) **down**)

Info - Exit ShortMagic3

ExitS3Method = 2 (1 for trailing in Pips; 2 for trailing in **dark orange** line (highest high x bars) if method 2 should be visible on chart)

StoppMethodS3 = 1 (0 = OFF / 1 = Pips / 2 = highest high of x bars (HiLo indicator))

StoppM1S3 = 100 (stop method 1 - in pips)

StoppM2S3 = 20 (stop method = 2 / lowest low of 20 bars)**TakeProfitS3 = 0** (in pips / OFF if 0)

TrailingStopS3 = 30 (in pips)

ExitHighestS3 = 5 (in highest high **dark orange** line)

StartTrailS3 = 50 (valid for **both** Exit Methods - start trailing after price moved over this value (in pips) **down**)

Info - ProfitTrailingShort1 (Magic1, Magic2, Magic3)

InProfitPTS1 = 500 (if current profit in \$ over value)

StoppPTS1 = 100 (in pips / OFF if 0)

TrailingStopPTS1 = 50 (in pips)

StartTrailPTS1 = 0 (start trailing after price moved over this value (in pips) **down**)

Info - ProfitTrailingShort2 (Magic1, Magic2, Magic3)

InProfitPTS2 = 700 (if current profit in \$ over value)

StoppPTS2 = 100 (in pips / OFF if 0)

TrailingStopPTS2 = 25 (in pips)

StartTrailPTS2 = 0 (start trailing after price moved over this value (in pips) **down**)

Info – ProfitTrailingShort3 (Magic1, Magic2, Magic3)

InProfitPTS3 = 1000 (if current profit in \$ over value)

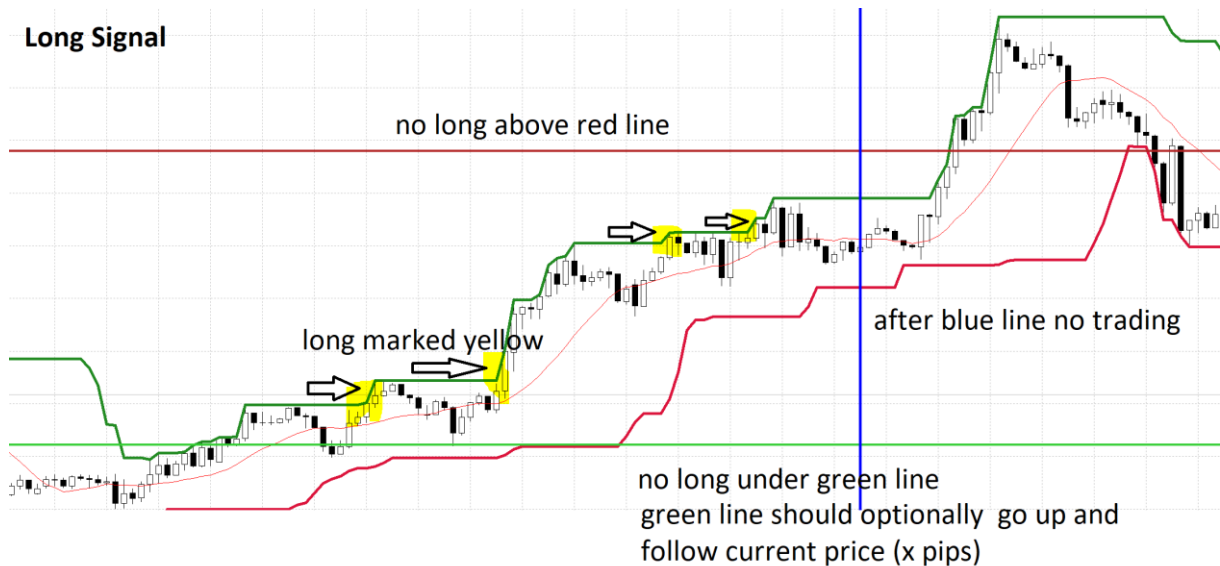
StoppPTS3 = 100 (in pips / OFF if 0)

TrailingStopPTS3 = 15 (in pips)

StartTrailPTS3 = 0 (start trailing after price moved over this value (in pips) **down**)

Example below for Long / Short = vice versa

Picture 1.) general overview (example long)



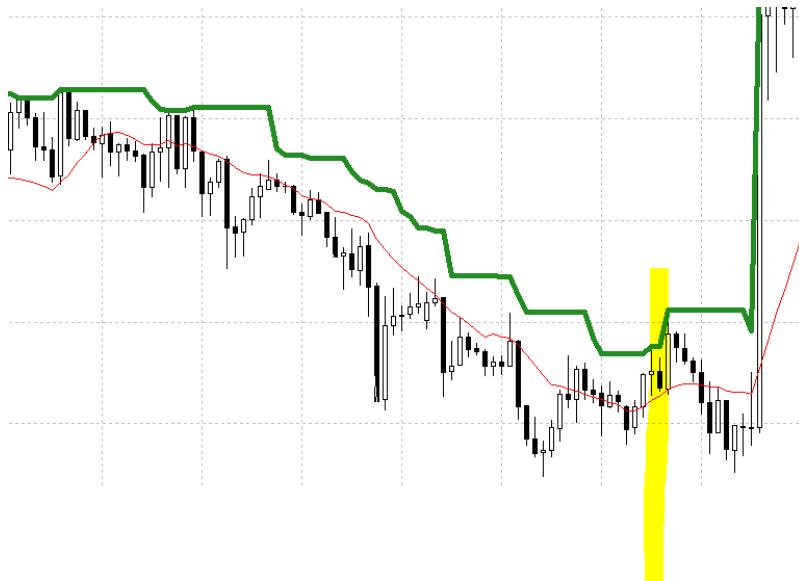
Picture 2.)

Example **Yellow**

Important :

Longtrigger = if current price (**this bar**) touches highest high of x bars (green line), then order should be send **not one bar later**.

condition : last LongN <= last LongN (10)



Picture 3.)

Example (below) of NO Signal, due to indicator is moving UP and condition is not met.

condition not true / no signal: last LongN <= last LongN (10)

