

I Have an Dashboard indicator which basically Shows me Currency paires base on the condition

$MA1 > MA2 > MA3 > MA4 > MA5$ and then the value of a MACD Listed beside it, the MACD as a Multi time frame MACD (MTF MACD)

It doesn't matter the values of MACD, if Positive or Negative

See diagram below



Now I want it to be modify so that it dispalys base on this condition

1) $MA1 > MA2 > MA3 > MA4 > MA5$

2) In MTF MACD window 1, MTF is Negative , that is its Below 0

3) In MTF MACD window 2, MTF MACD Signal line above MACD,

Then Show on Dashboard as Red and then the value of a MACD Listed beside it,But in this case ,

1) $MA1 < MA2, MA3 < MA4, MA5$,

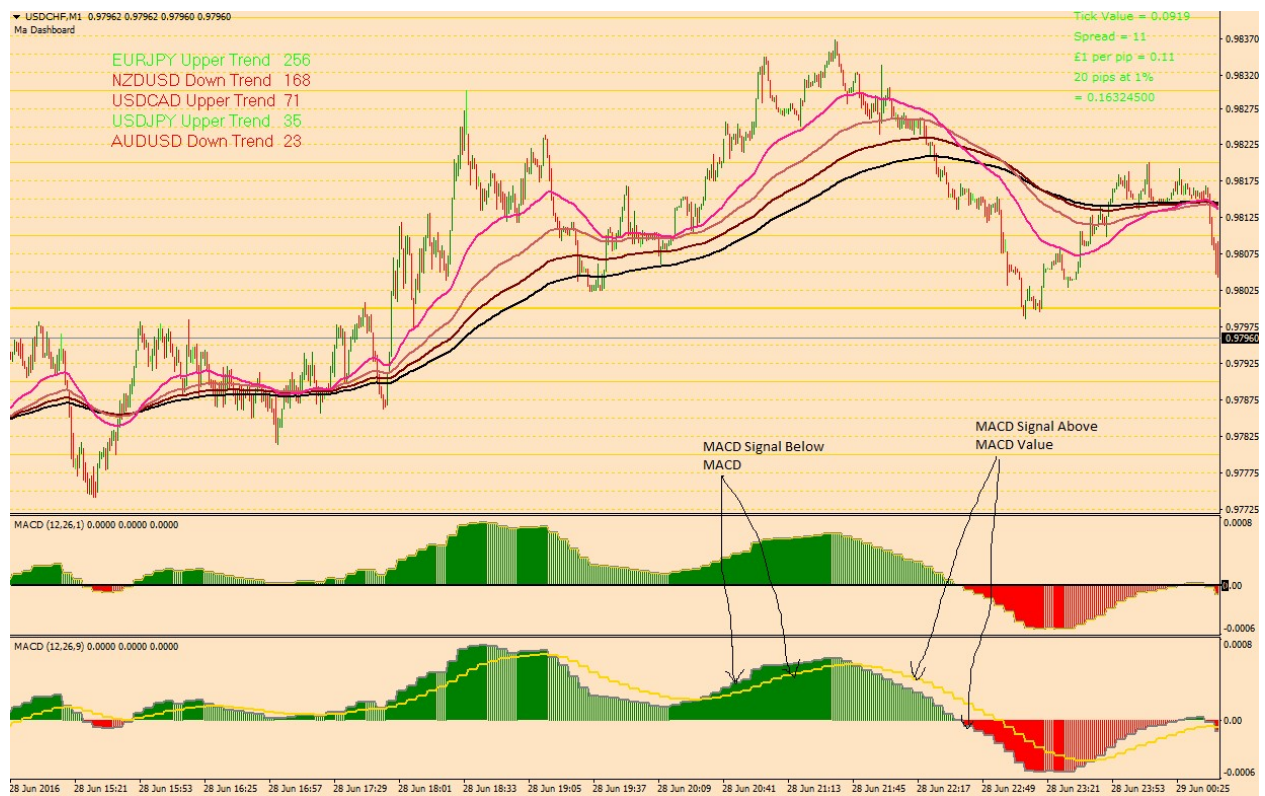
2) In MTF MACD window 1, MTF is Positive , that is its Above 0

3) In MTF MACD window 2, MTF MACD Signal line below MACD,

MTF MACD Signal line Below MACD, Show on Dashboard as Green and then the value of a MACD Listed beside it,

Kindly Note the settings for The two MACDs are different, Also The Value of MACD to be use for Calculations are for Time Frames That Have Closed

See image below



All Values of the MA and MTF MACD Are to be Customizable