

EA based 1 indicator, integrating exit strategy and alert sent to email (all 2 source codes are provided)

Dear developers and freelancers, I would need to create an EA based on MA channel ribbon filled indicator, which will define the conditions to enter into a trade (see below details), and integrate into it stop loss, trailing and take profit (please refer to RonZ section). Finally, I would like to add alert signal to be sent to an email and/or phone number.

Please have a look at the attached documentation and let me know if you have any questions.

System characteristics:

MT4 platform

5 digits broker

All expressed in points

For information:

No limitation for currency pairs and timeframes

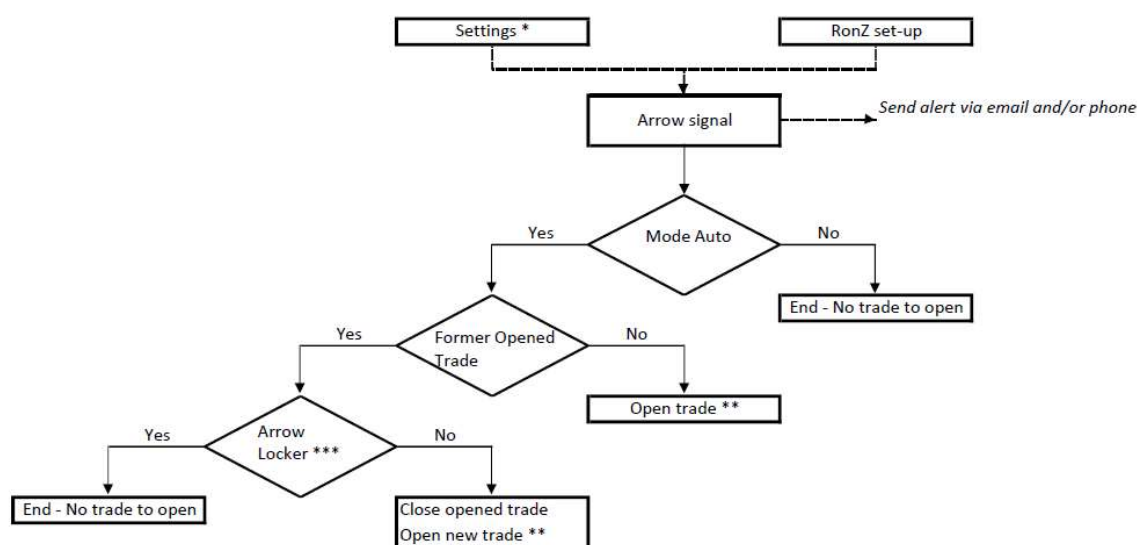
Included data:

RonZ – EA and script

MA channel ribbon filled – indicator and script

A) Trade definition (based on MA channel ribbon filled script provided)

The EA will enter into a trade following the below scheme:



* the settings section will define:

(i) Max Spread expressed in points, i.e. if the spread is higher than the set value, no trade will be made

(ii) Lot size (fixed no money management), from 0,01 to 50

(iii) Numbers of trade opened per currency, i.e. the EA will be ran on each currency pair, mostly 1 opened trade per currency but I would like to have the possibility to indicate how many trades can be opened at the same time on a currency pair – value can be set from 1 to 10.

(iv) trading hours, with and ON/OFF option and with start hour and end hour GMT time when ON, i.e. this set will define between which hours trades can be opened/made

(v) a manual or Auto Mode with ON/OFF option, i.e. when ON it will trade automatically, when OFF the EA will be limited to send alerts only,

(vi) Arrow lock option, with ON/OFF option, i.e. when a previous trade is opened it will define whether it should close it when OFF, or ignore new arrow signal when ON

(vii) and RonZ exit strategy integrating stop loss, trailing and take profit settings on top of that (RonZ should be working even if we are in a manual mode)

** A new trade will be opened in the same direction as the arrow signal :

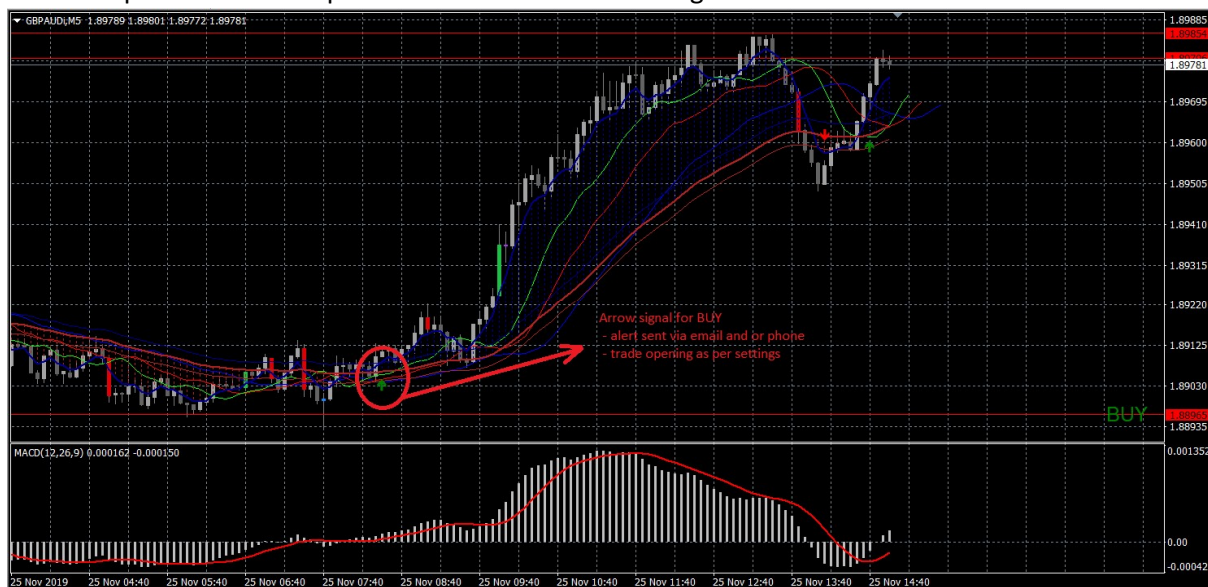
- BUY when arrow up and green
- SELL when arrow down and red

*** Arrow locker, more detailed view will follow on the below screens, the purpose here will be to define whether the EA should follow the first entered arrow signal, or whether it should close the trade and entered into a new trade in the opposite direction at new arrow signal even if RonZ settings exit strategy have not been met.

It will allow to eliminate parasite trades when a currency pair will enter into consolidation.

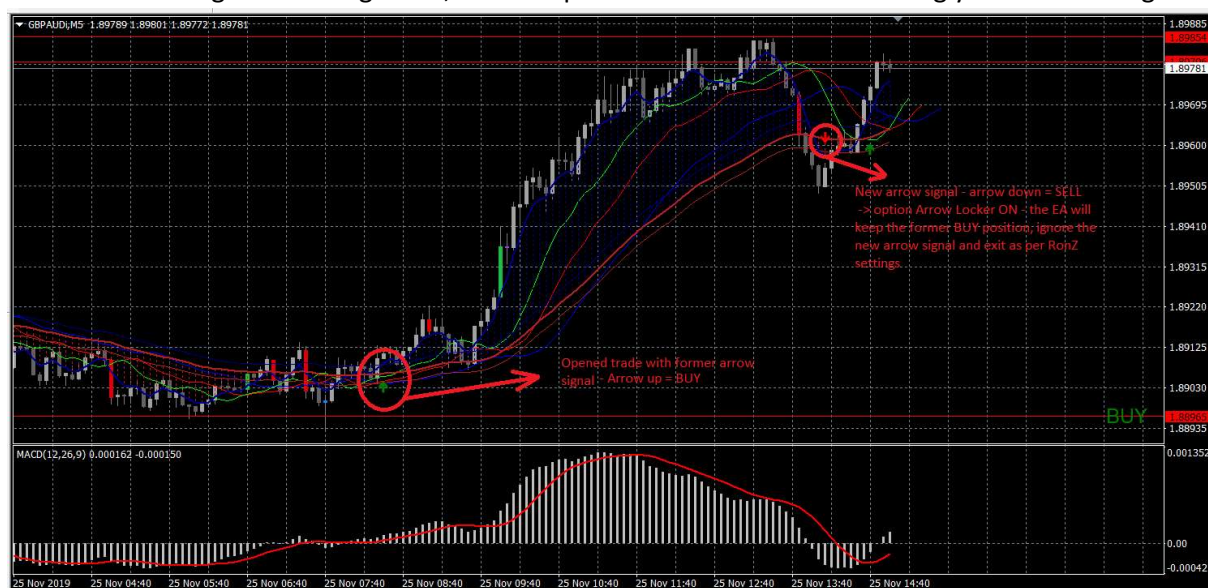
a) No opened trade

New BUY position will be opened in line with the arrow signal



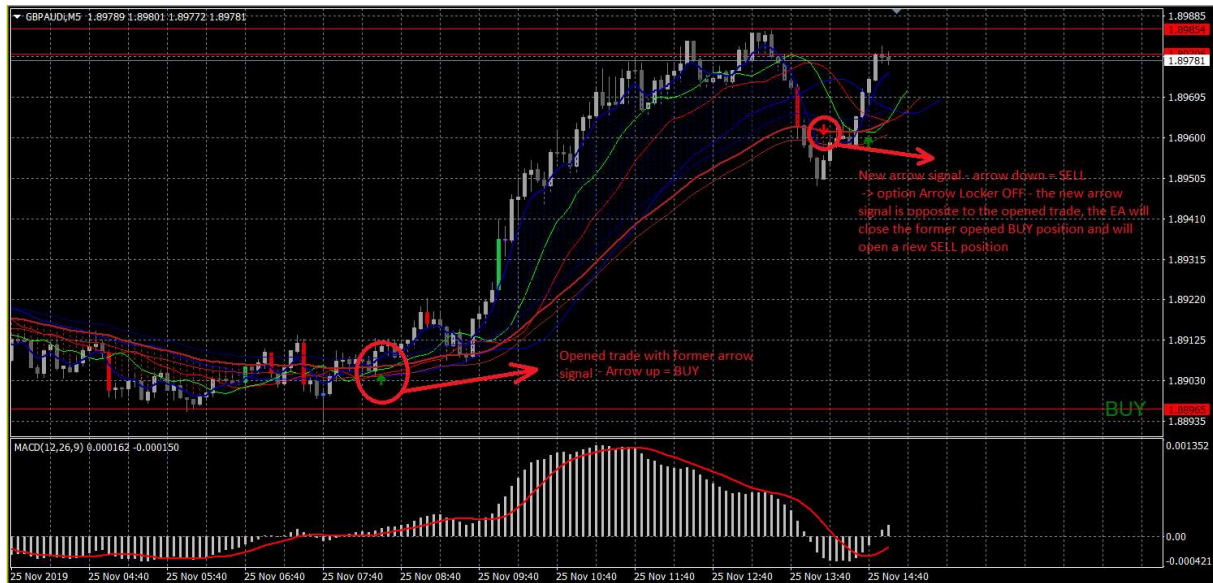
b) Opened trade – Arrow locker ON

The new arrow signal will be ignored, former opened trade will close accordingly to RonZ settings



c) Opened trade – Arrow locker OFF – case 1 – opposite direction

The former BUY trade will be closed, ignoring RonZ settings, and new SELL position will be opened



d) Opened trade – Arrow locker OFF – case 2 – same direction

This case doesn't occur

B) Exit strategy (based on RonZ – EA and script provided)

For the exit strategy, i.e. take profit, stop loss and trailing, I will use the RonZ EA to be added to the created EA.

Only one setting field is not relevant, but can be left as it allows to select whether it should be applied to all, or a single chart.

The RonZ settings should always be active, even if we are in a manual mode (manual mode only define whether a trade should be opened manually or automatically).

Expert - RoNz_Auto_SL-TS-TP

O programie Ogólne Wpisz parametry		
Zmienna	Wartość	
TakeProfit	500	
StopLoss	250	
SLnTPMode	Hidden SL n TP	
Target Pips to Lock Profit	100	
Profit To Lock	60	
Trailing Method	Step Keep Distance	
Trailing Stop	50	
Trailing Stop Step	10	
ChartSymbolSelection	All Opened Orders	Can be removed, also not essential as can be applicable on currency chart only
Enable Alert	false	